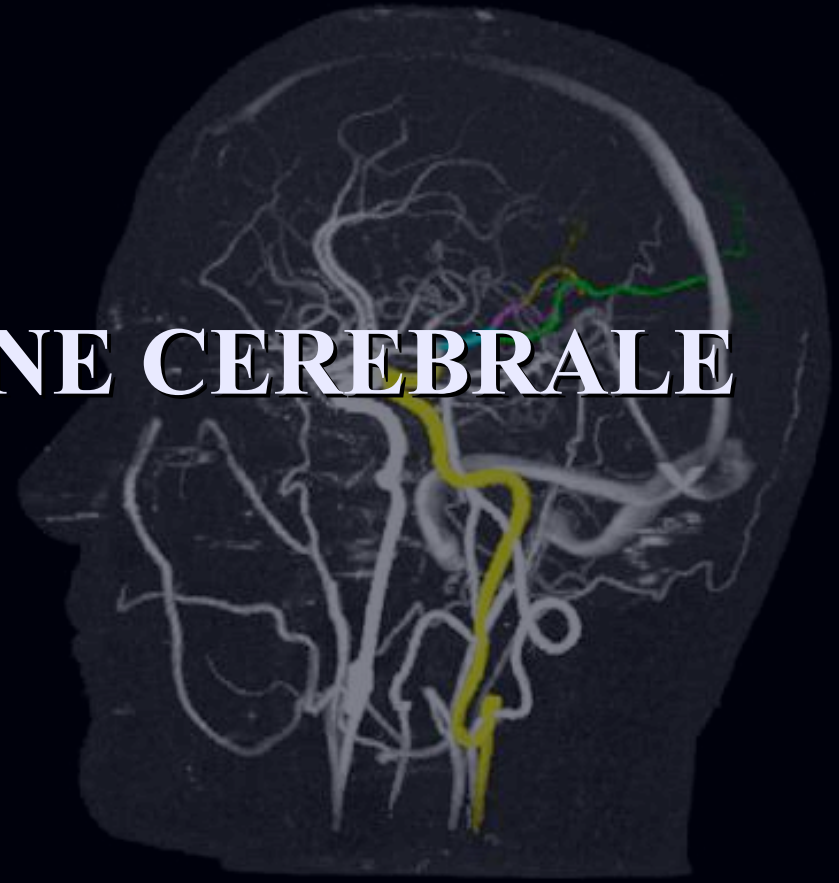
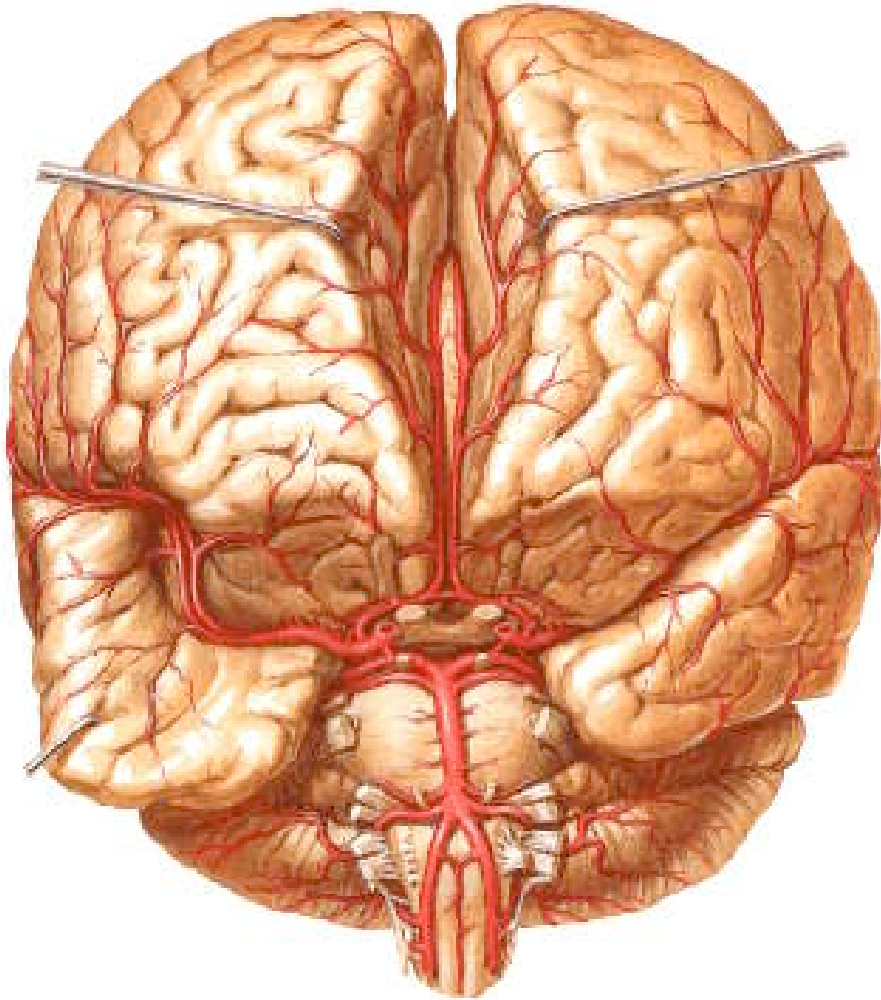


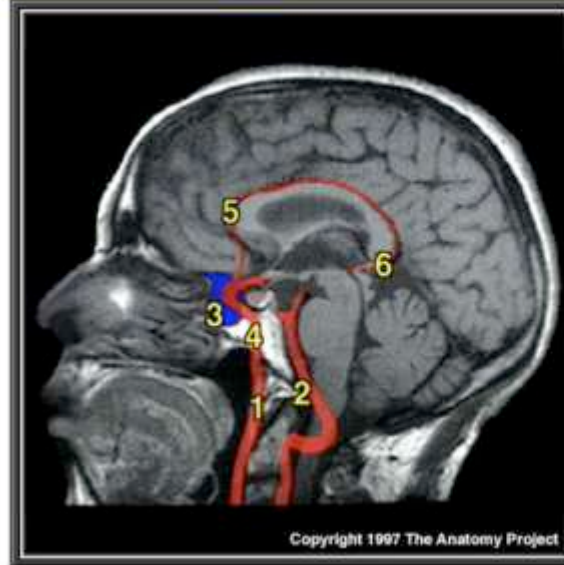
CIRCOLAZIONE CEREBRALE



Circolazione cerebrale



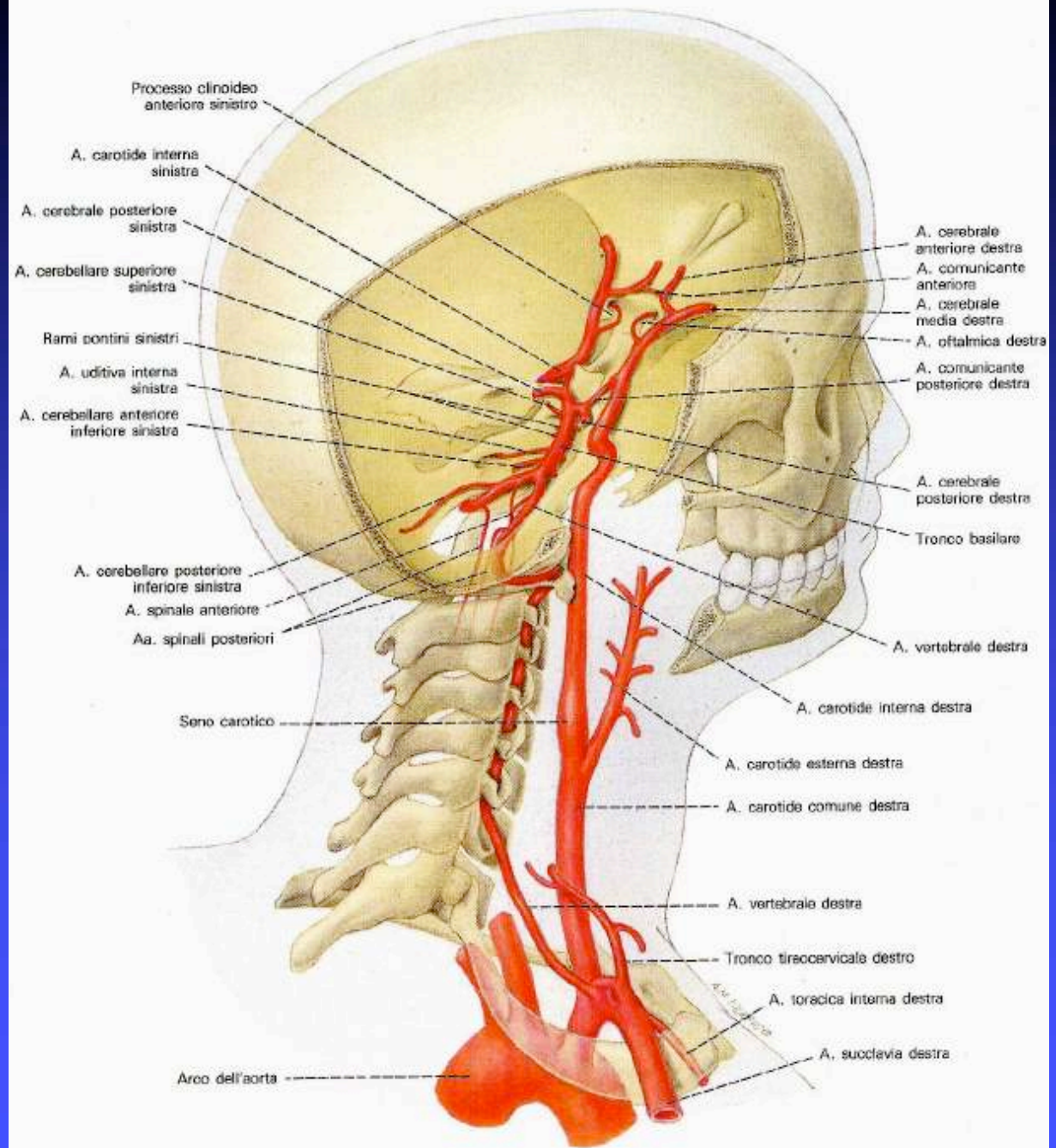
MRI, Brain & Spinal Cord, Sagittal Section



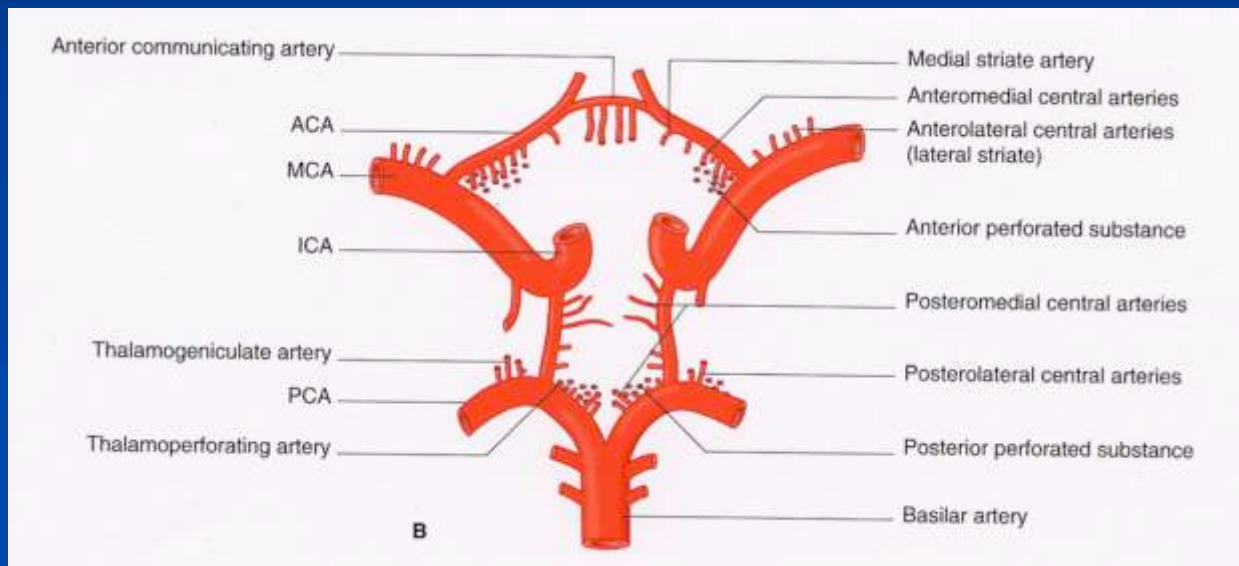
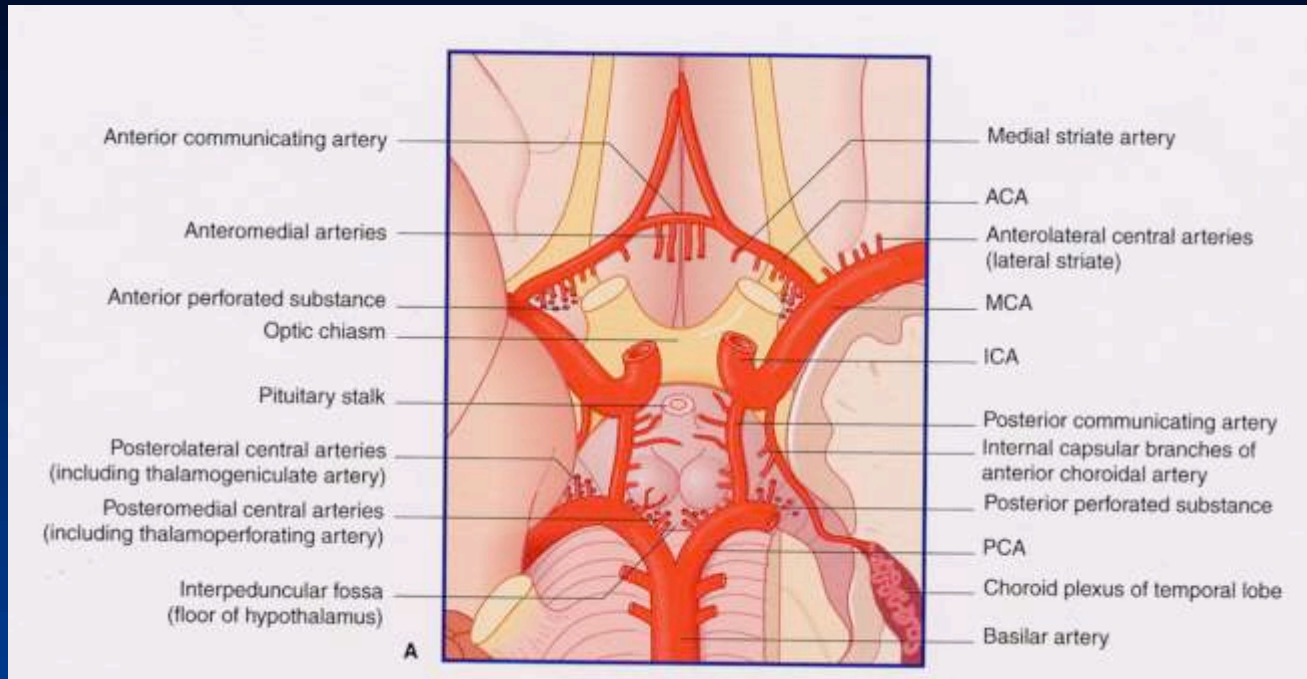
1. Internal carotid artery
2. Vertebral artery
3. Cavernous sinus
4. Carotid canal
5. Anterior cerebral artery
6. Posterior cerebral artery

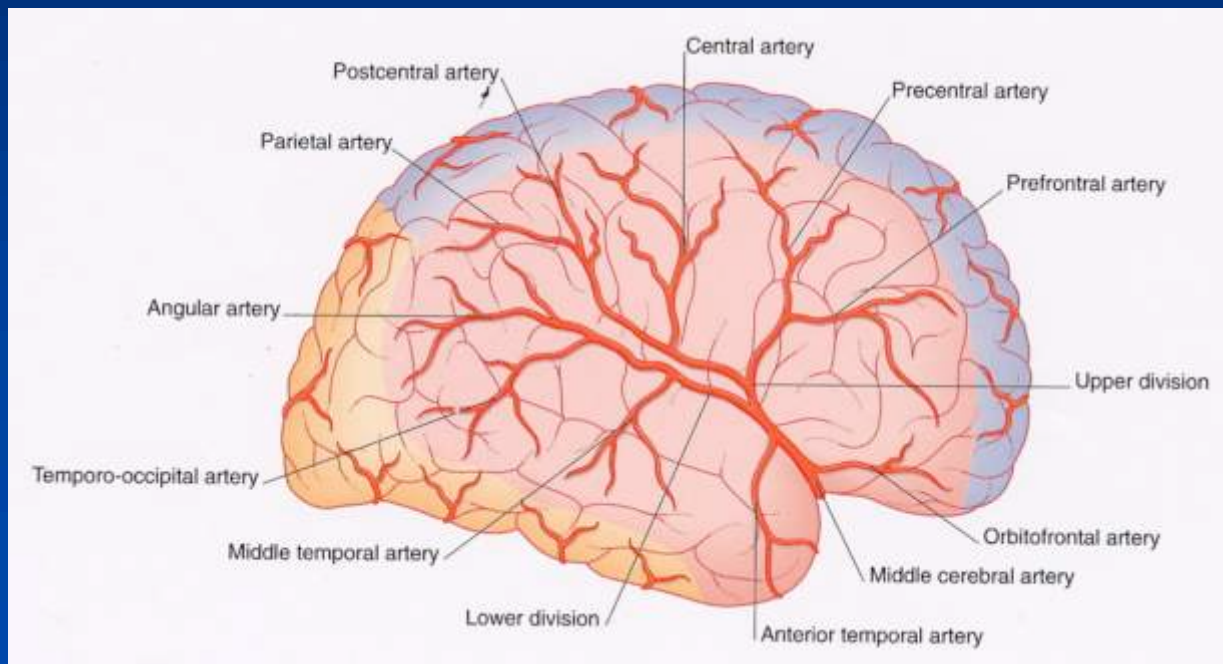
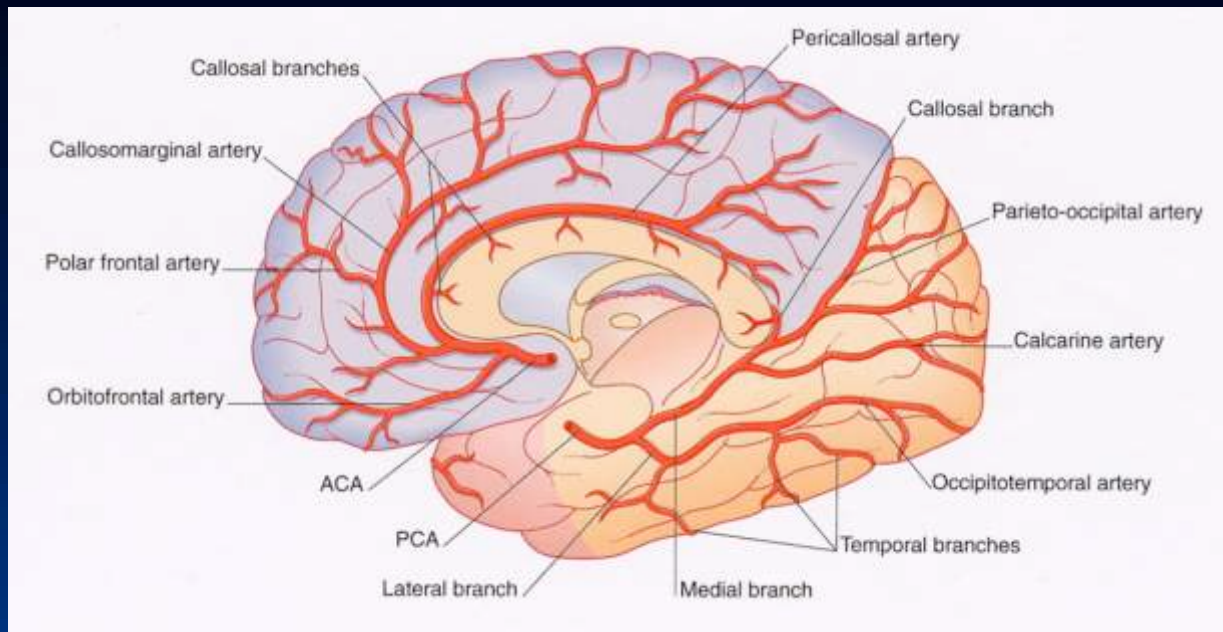
Copyright 1997 The Anatomy Project

- Le arterie penetrano nella scatola cranica dalla parte inferiore, si anastomizzano alla base dell'encefalo per dare origine a rami che salgono decorrendo alla superficie dell'encefalo.
- Da questi rami superficiali si originano poi rami che si portano in profondità nel parenchima cerebrale.

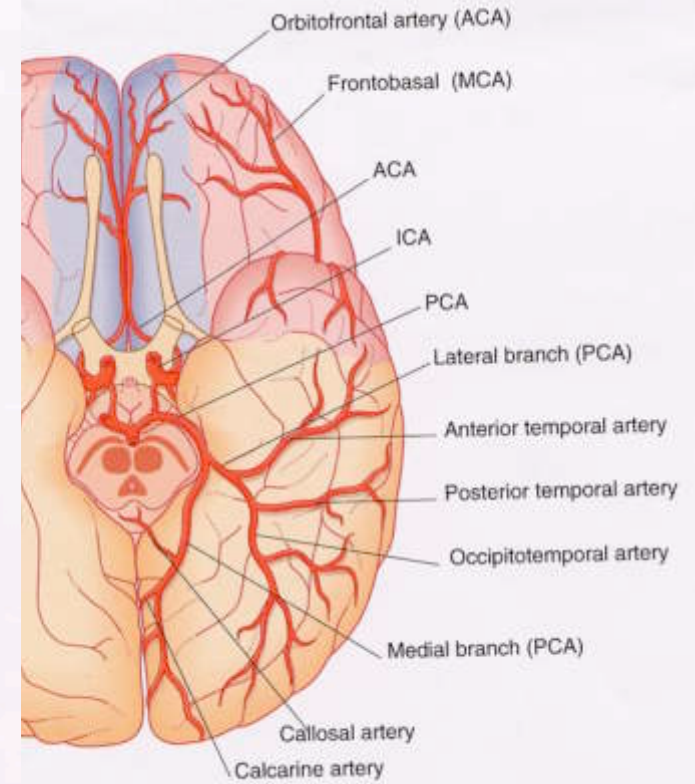
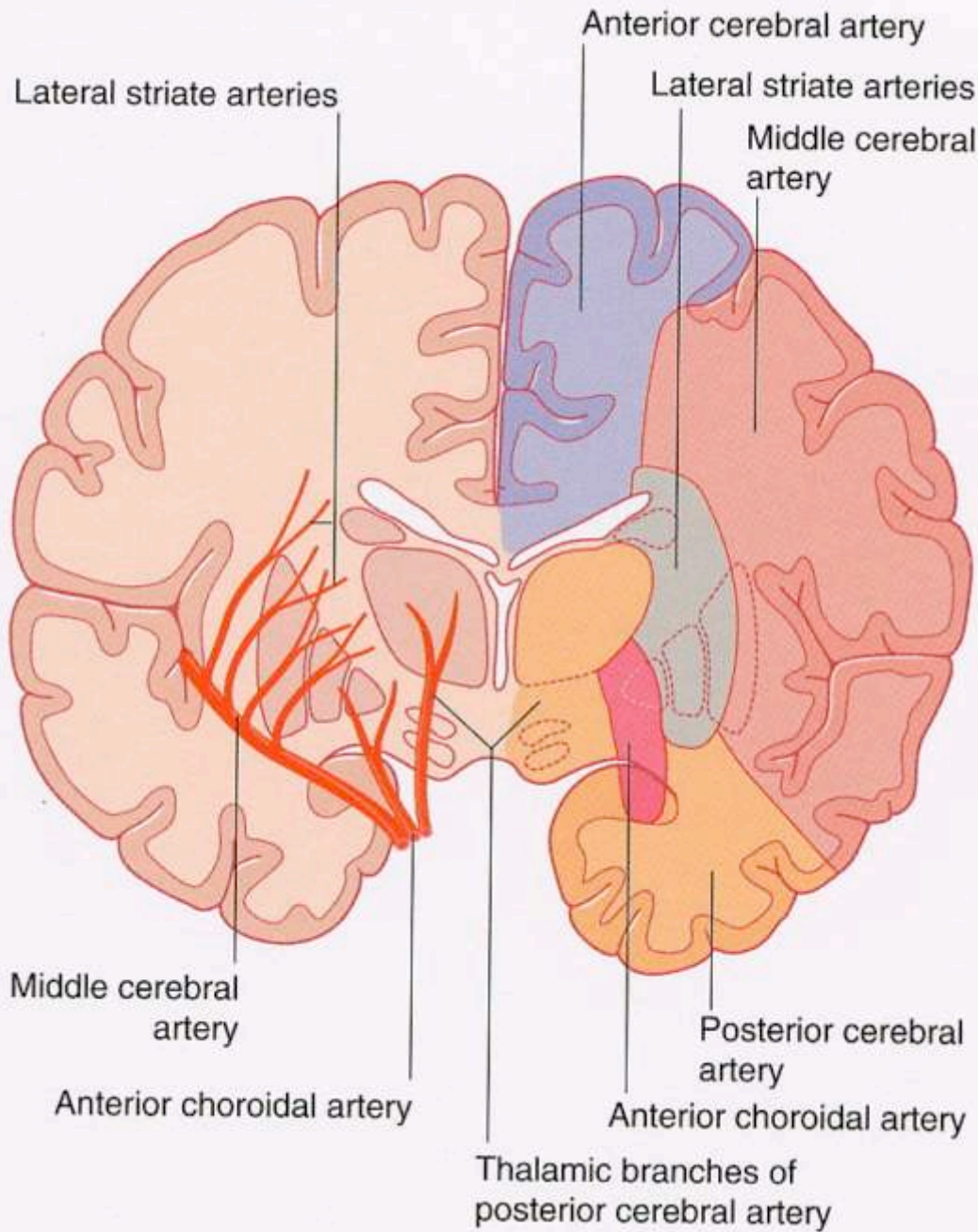


CIRCOLO DI WILLIS

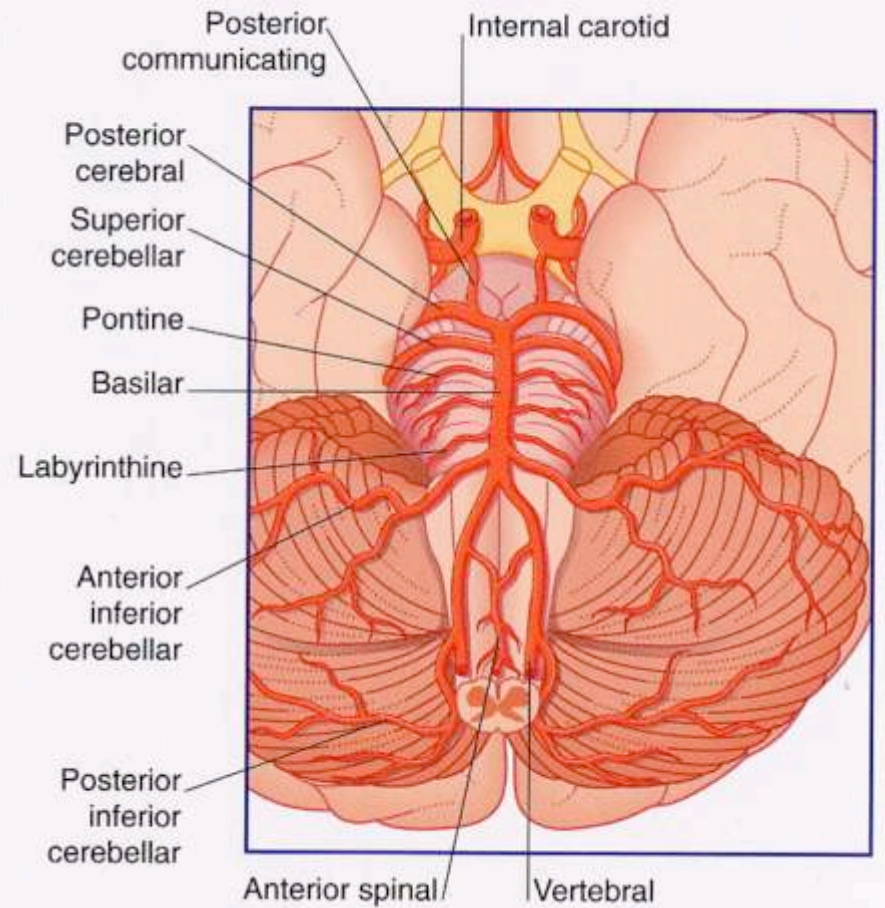
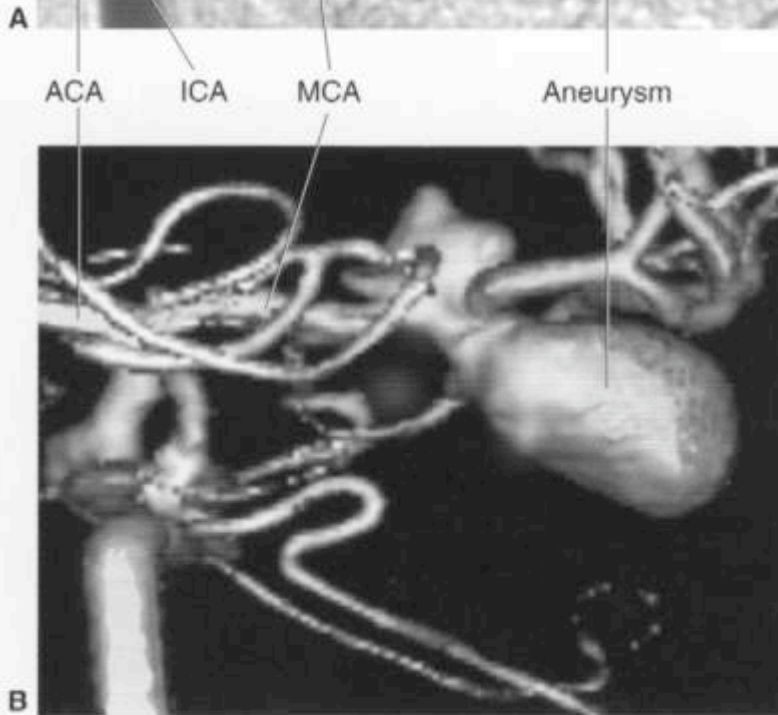
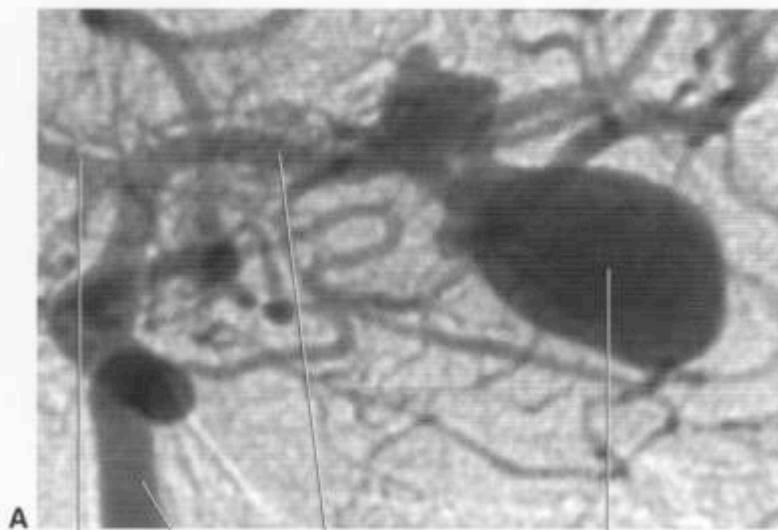




Le arterie principali risalgono lungo la faccia mediale e la faccia laterale degli emisferi.



Le arterie a partire dalla superficie si approfondano nella compagine del tessuto cerebrale

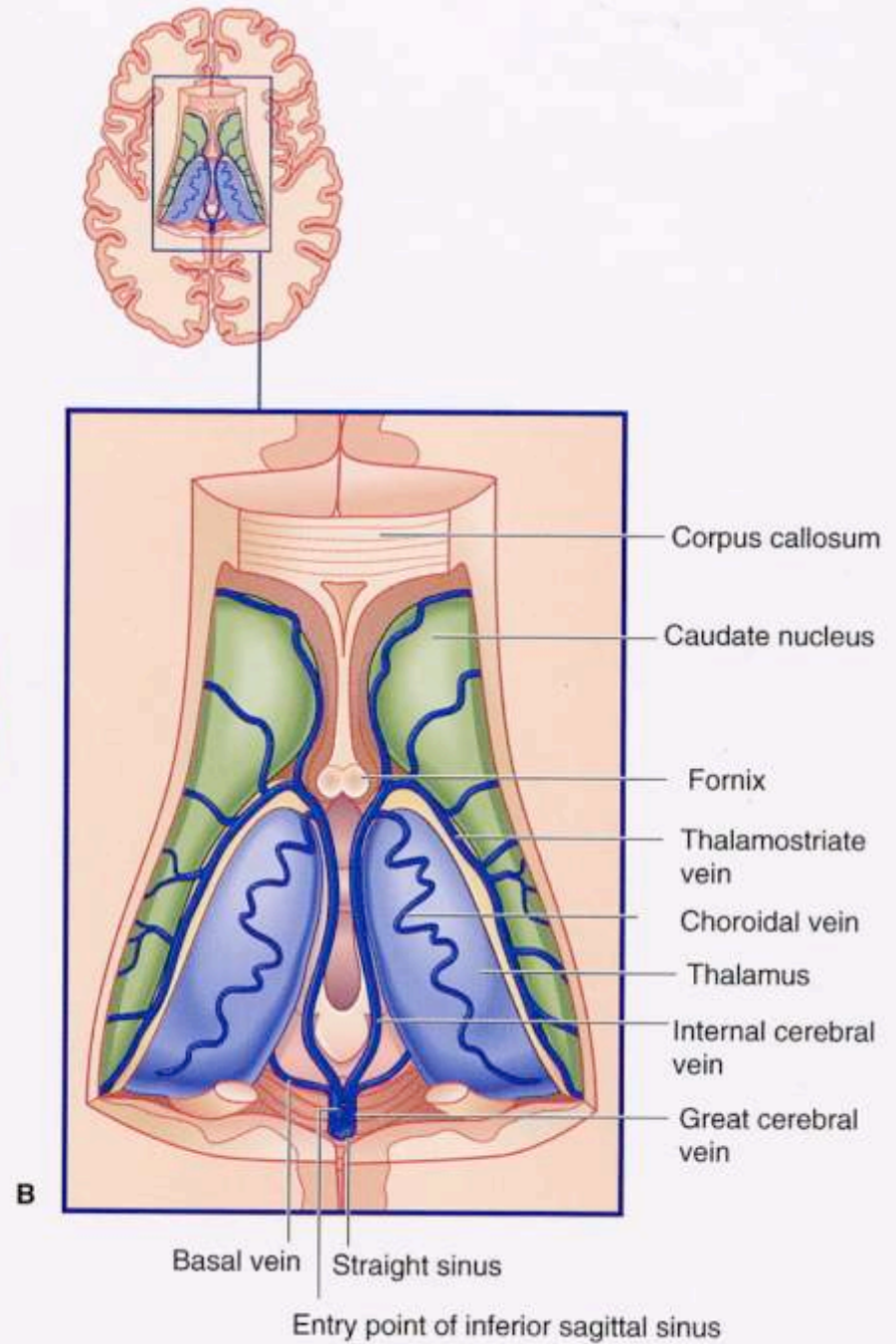
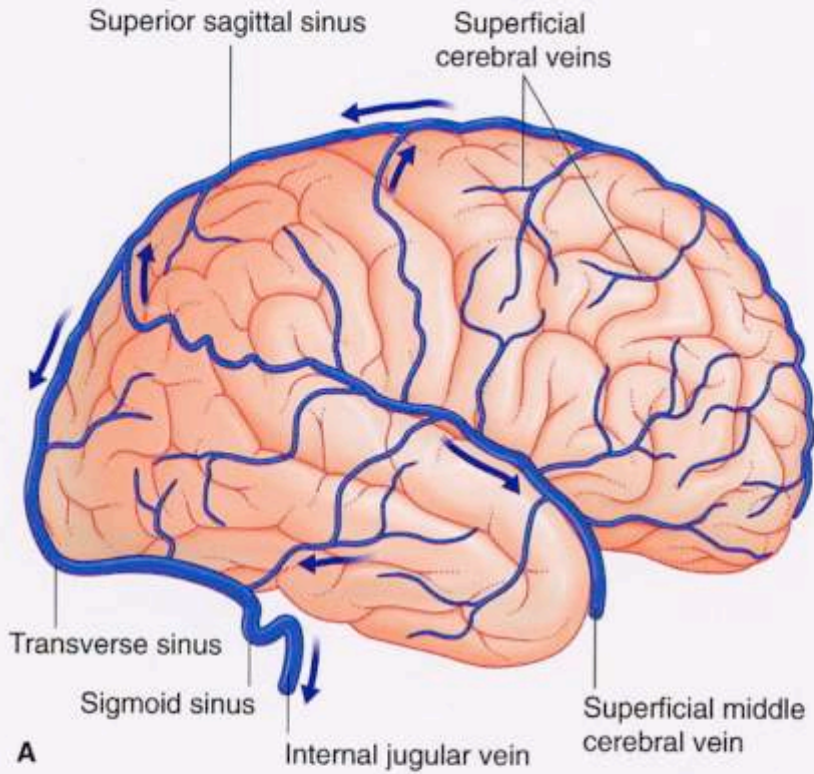


Arteria basilare

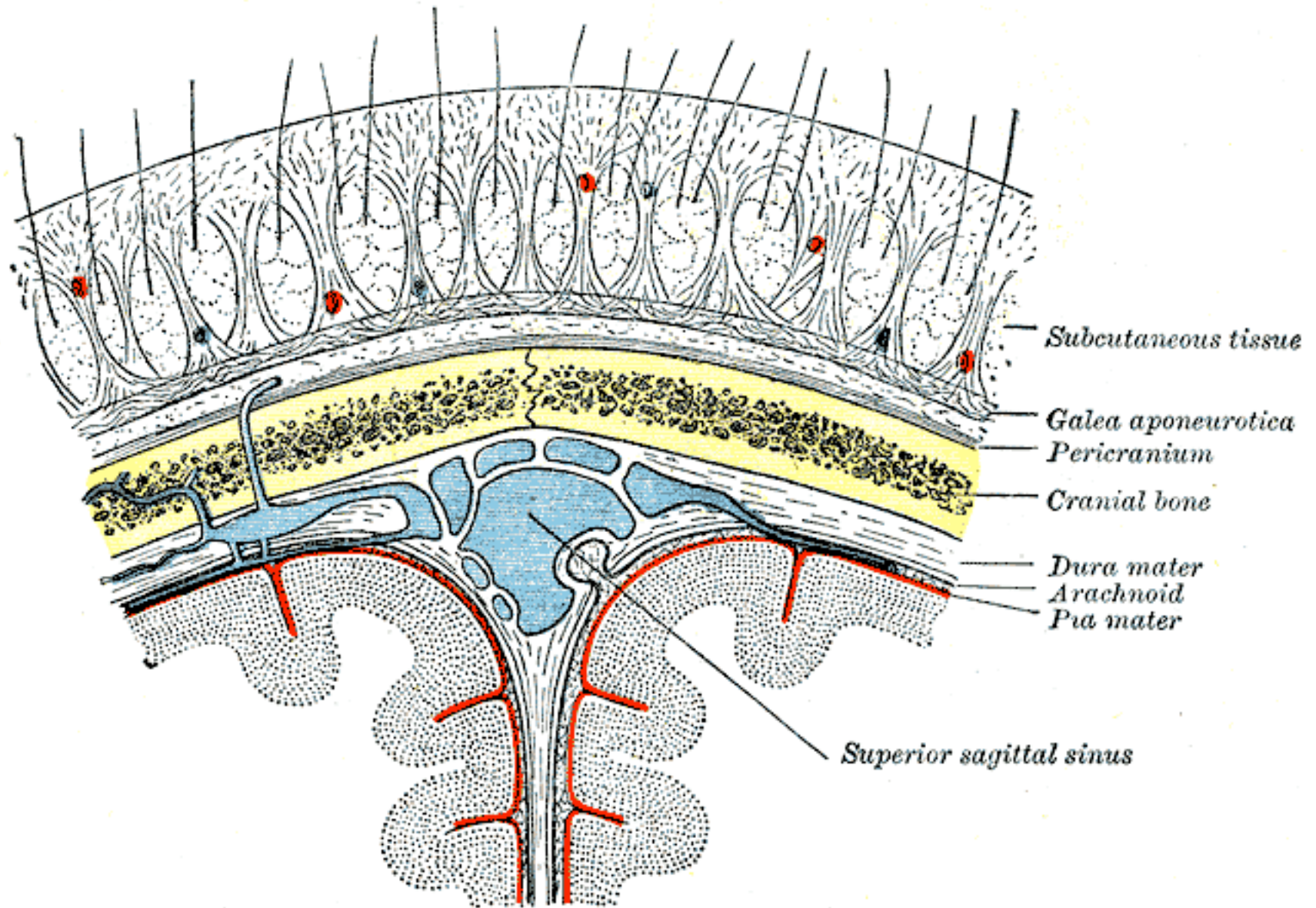
Aneurisma dell'arteria basilare

Fig 5.8

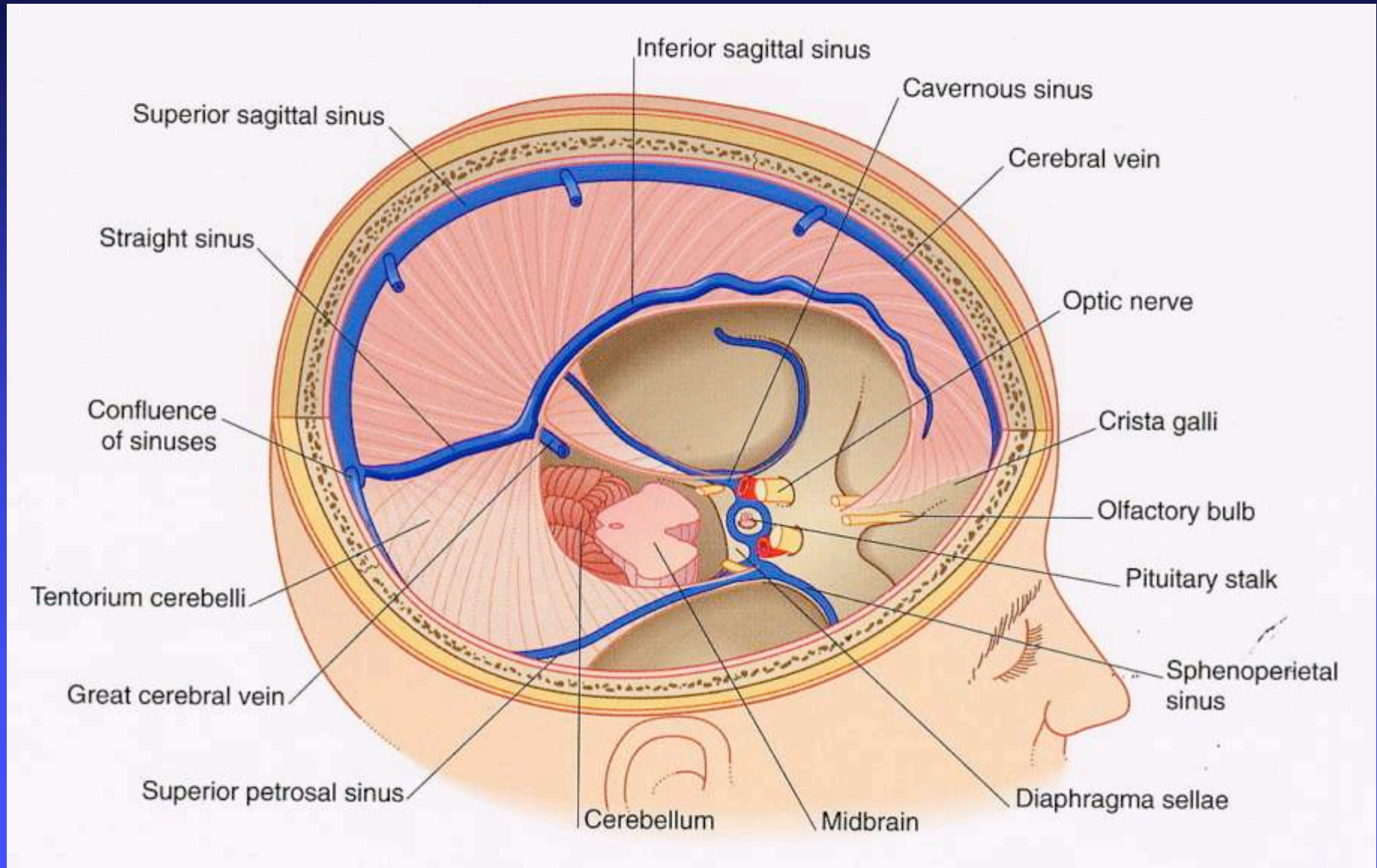
VERNE CEREBRALI



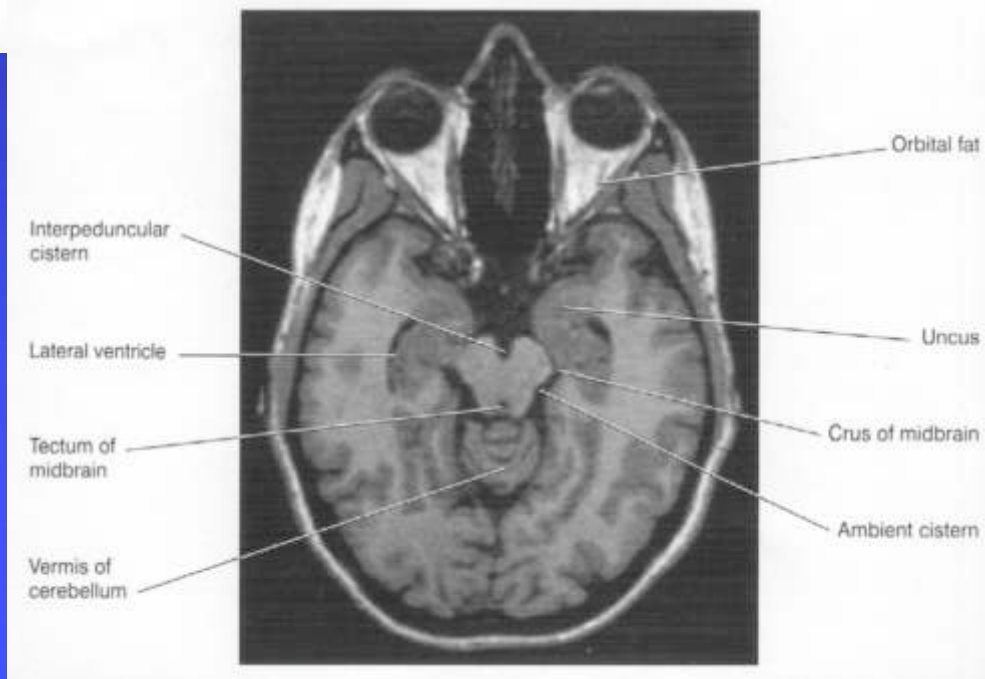
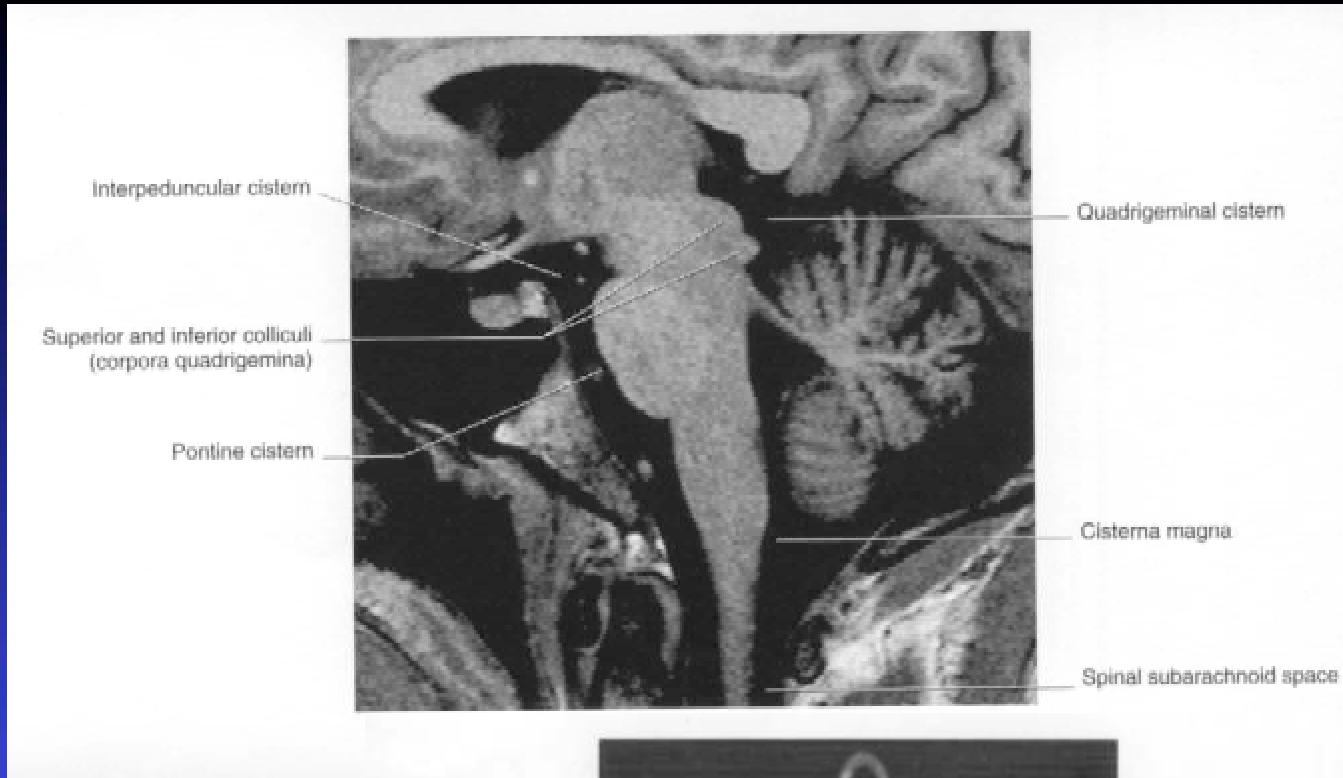
Circolazione venosa cerebrale

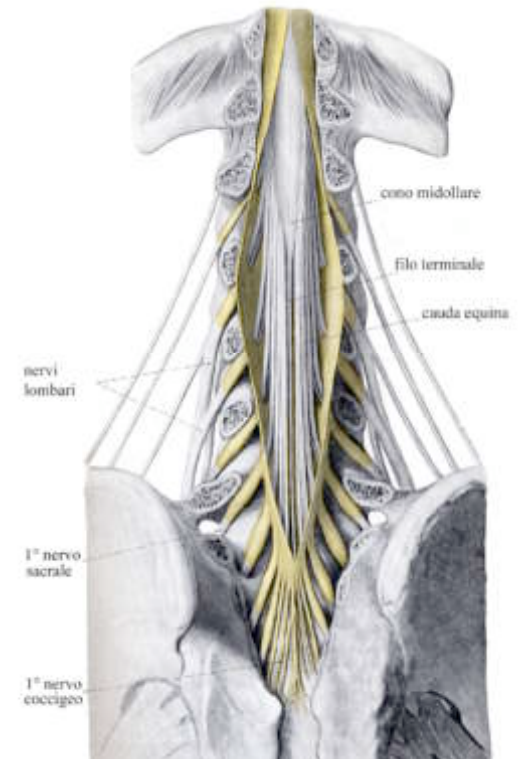
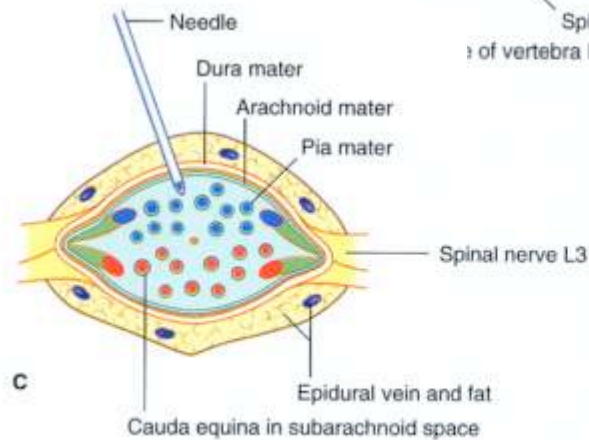
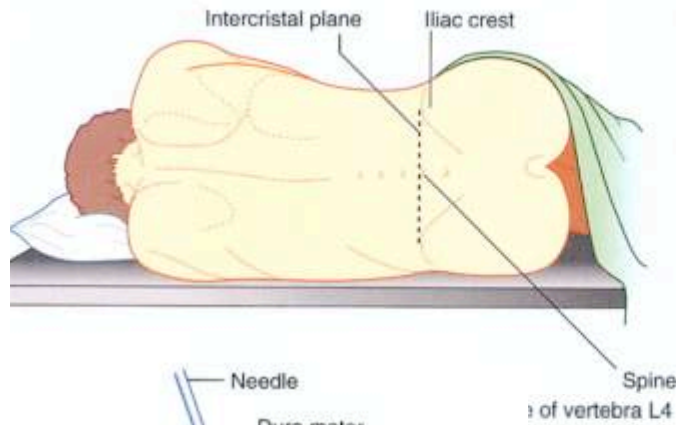
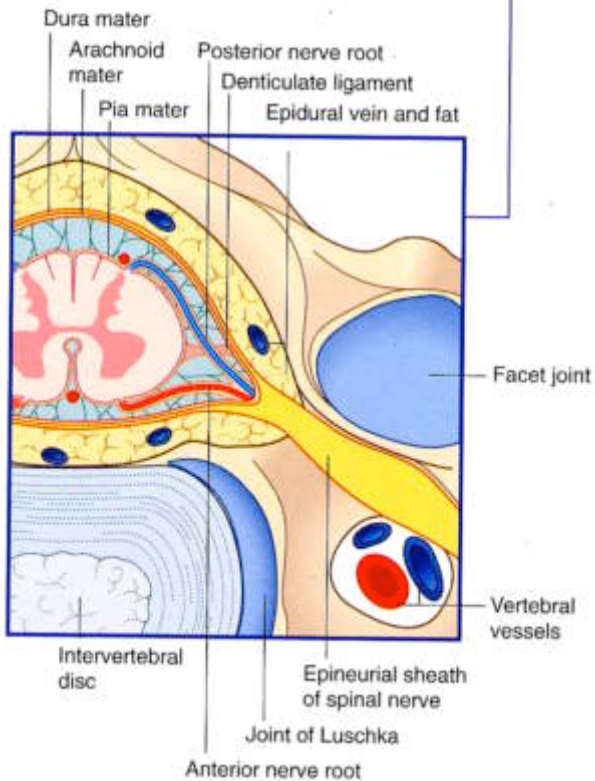
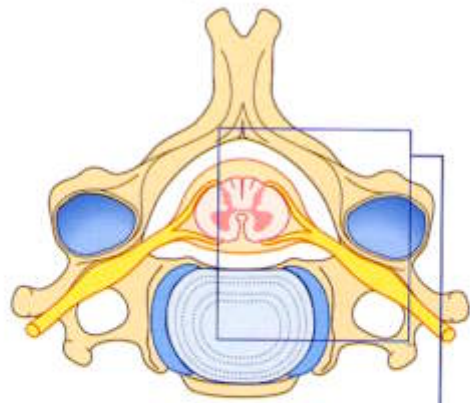


Circolazione venosa cerebrale

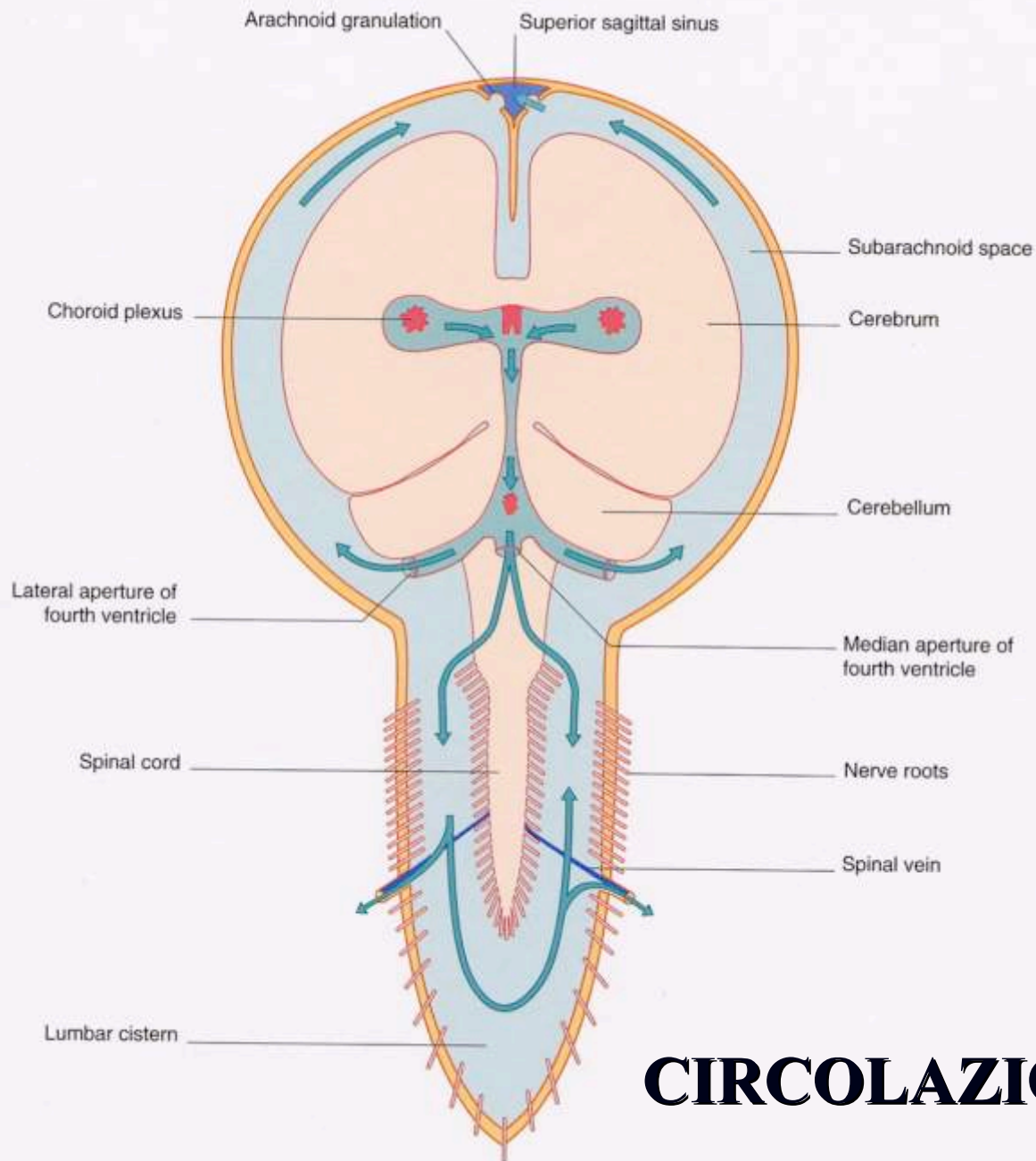


CISTERNE SUBARACNOIDEE





MENINGI SPINALI



CIRCOLAZIONE LIQUORALE

VENTRICOLI CEREBRALI

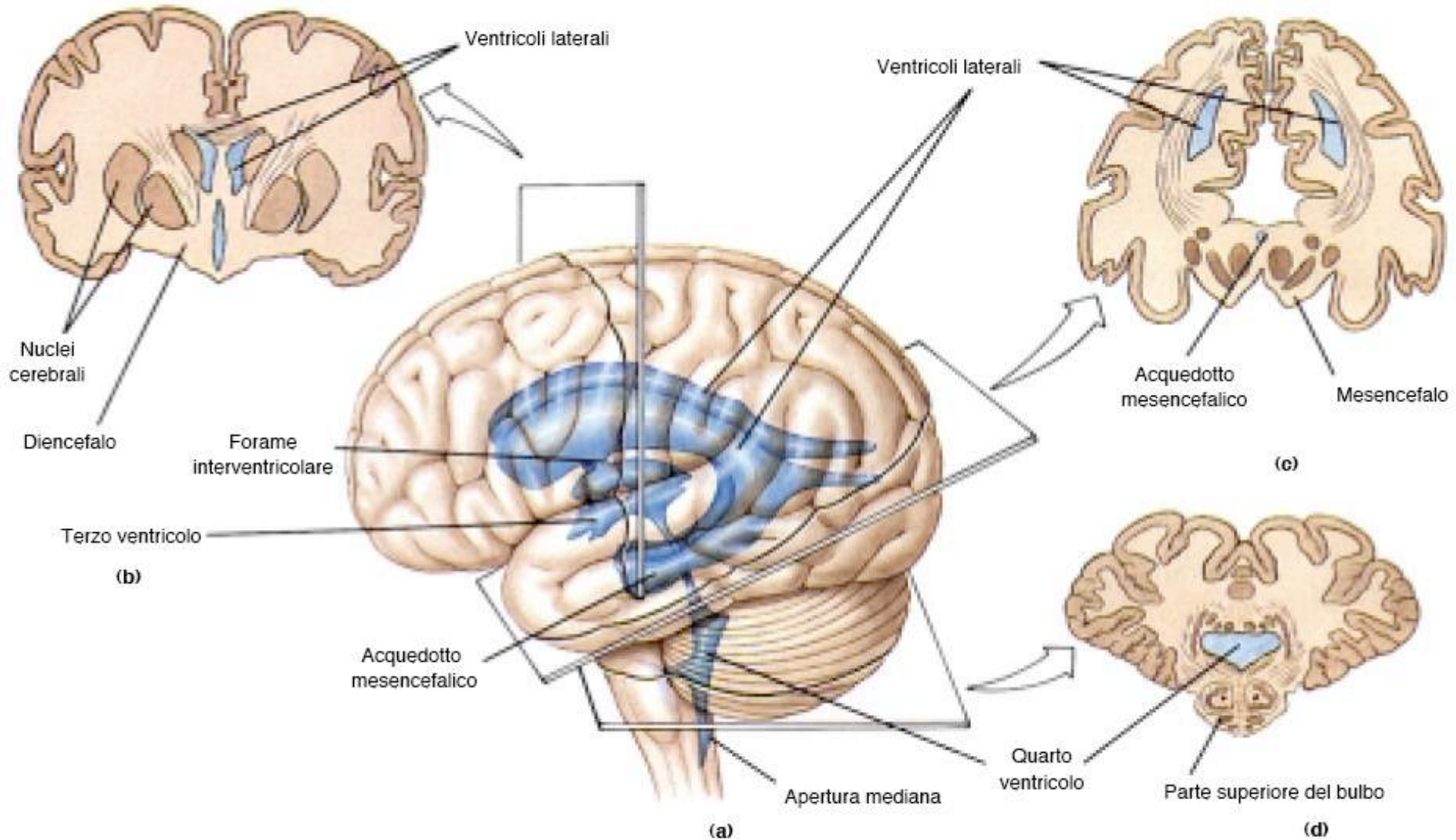
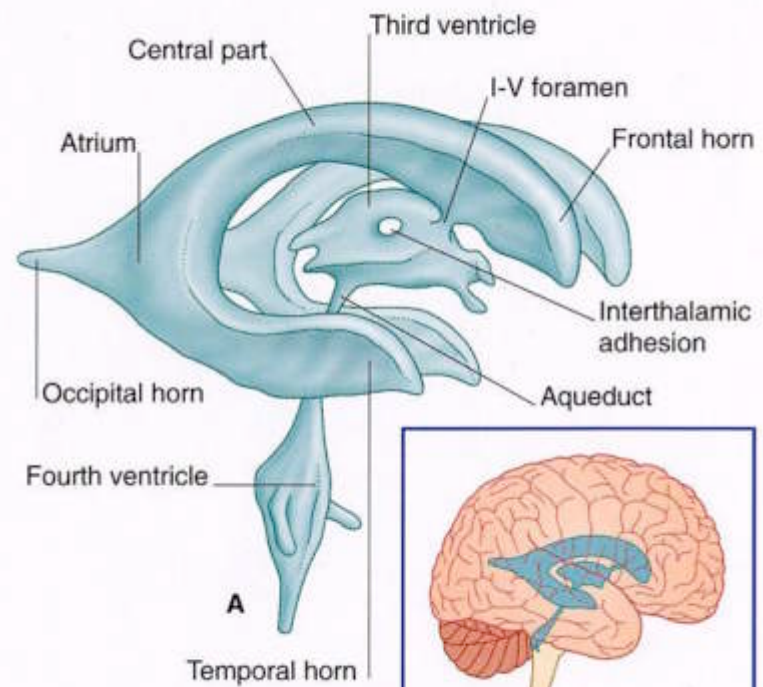
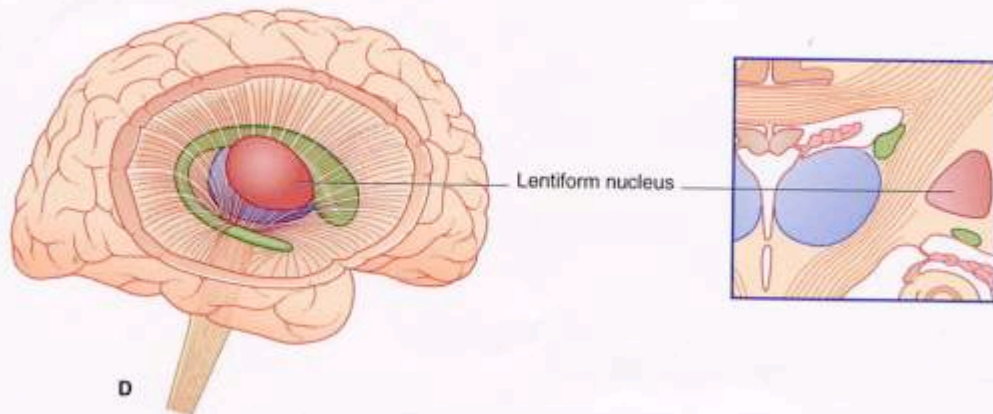
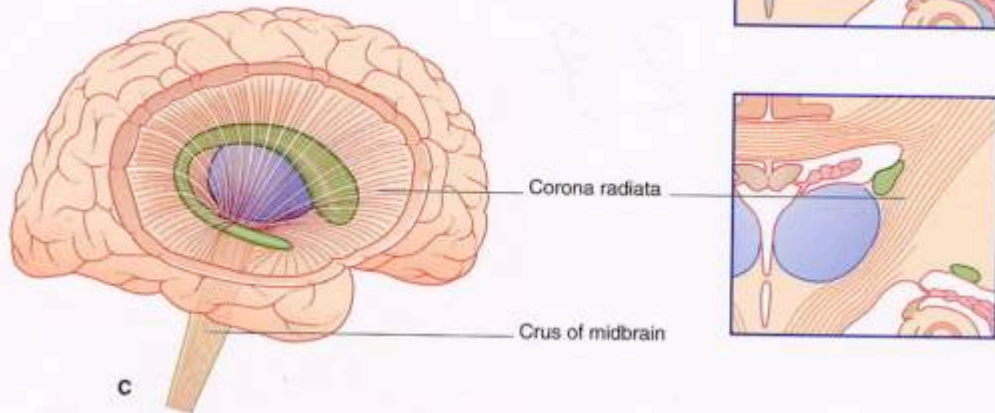
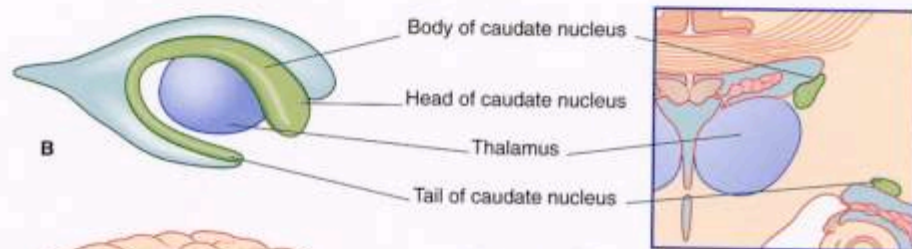
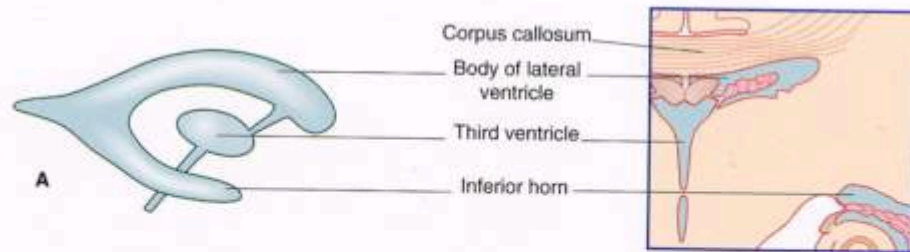
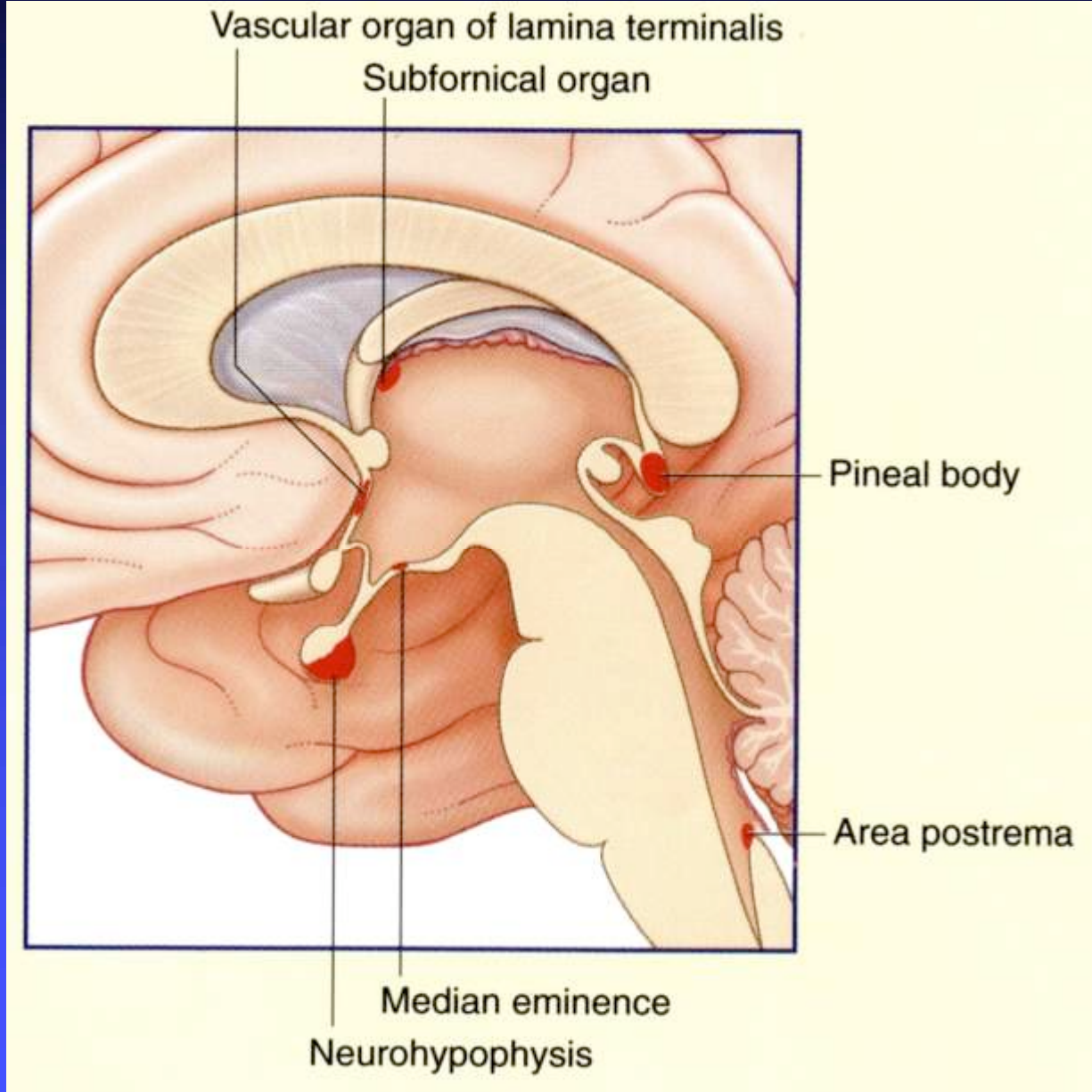


Figura 14.2 - Ventricoli cerebrali. (a) Disposizione e localizzazione dei ventricoli visti attraverso un cervello trasparente. (b) I due ventricoli laterali degli emisferi cerebrali e il terzo ventricolo del diencefalo. (c) L'acquedotto mesencefalico unisce il terzo ed il quarto ventricolo. (d) Il quarto ventricolo si estende tra il cervelletto ed il ponte e continua oltre la porzione superiore del bulbo.



ORGANI CIRCUMVENTRICOLARI



Regioni situate vicino al sistema ventricolare in cui manca la barriera ematoencefalica.

Le molecole possono passare facilmente dal sangue al ventricolo e viceversa.

OVLT

Eminenza mediana

Neuroipofisi

Org. Subfornicale

Pineale

Area postrema