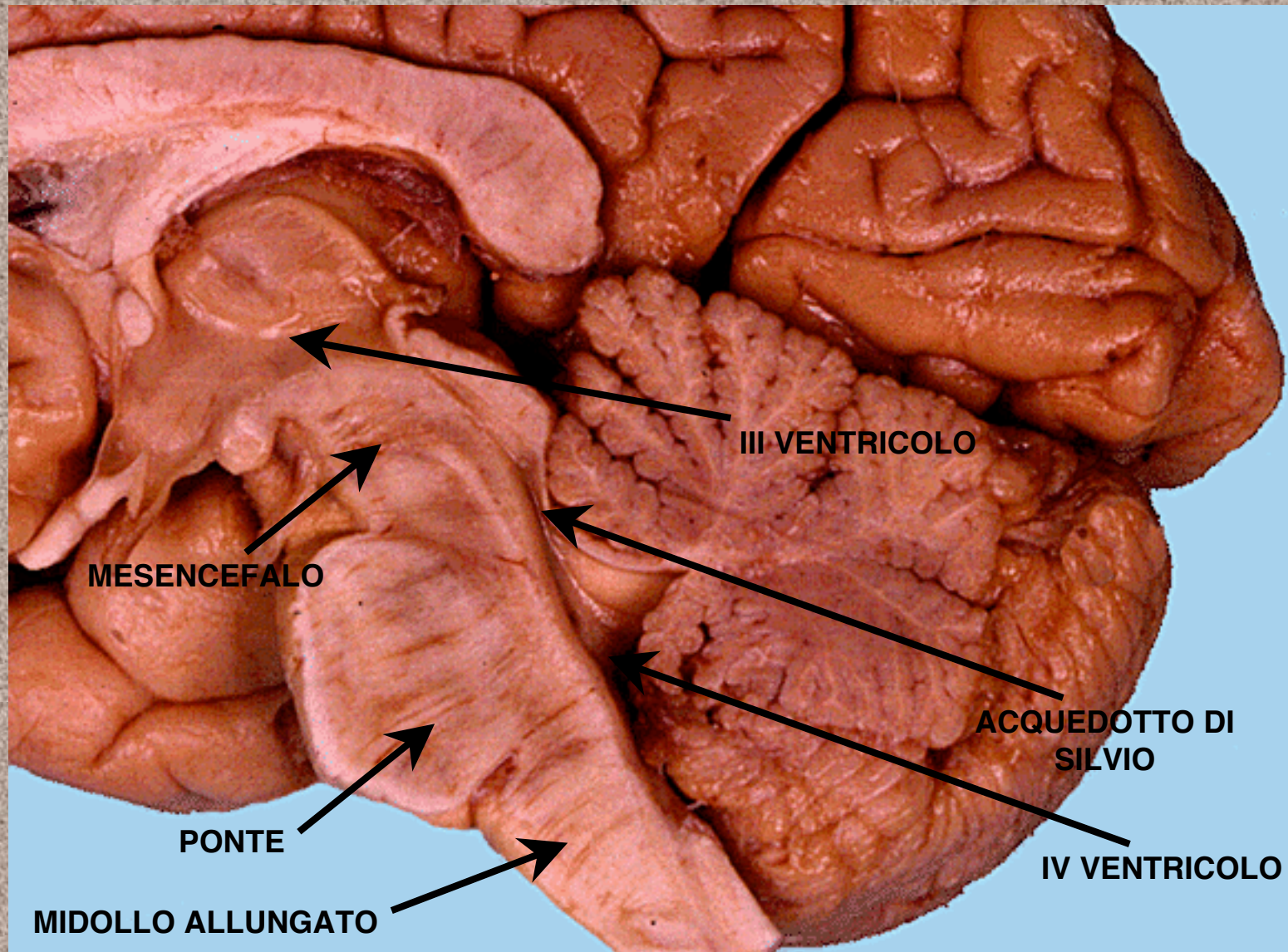


Tronco encefalico

GENERALITA'

Il tronco encefalico è costituito da 3 parti

- **Midollo allungato o bulbo**
- **Ponte**
- **Mesencefalo**



MESENCEFALO

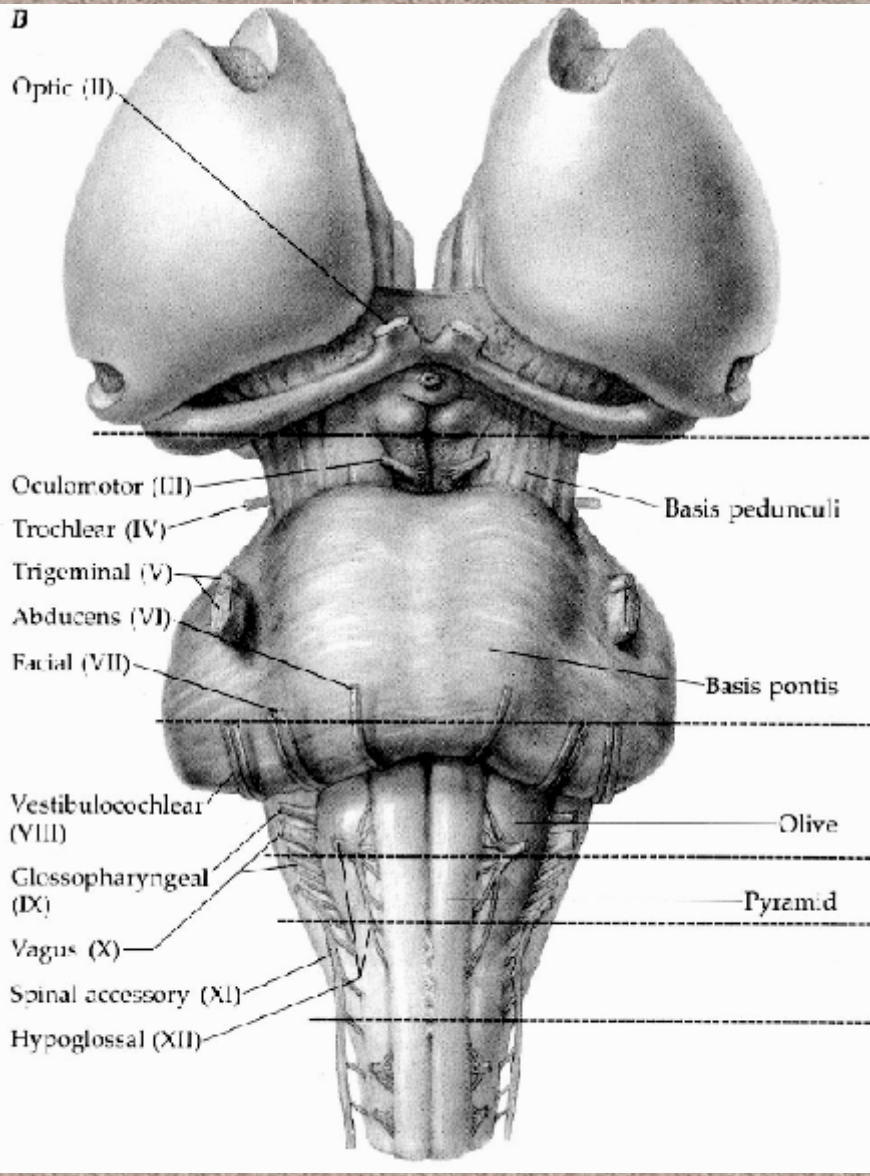
PONTE

MIDOLLO ALLUNGATO

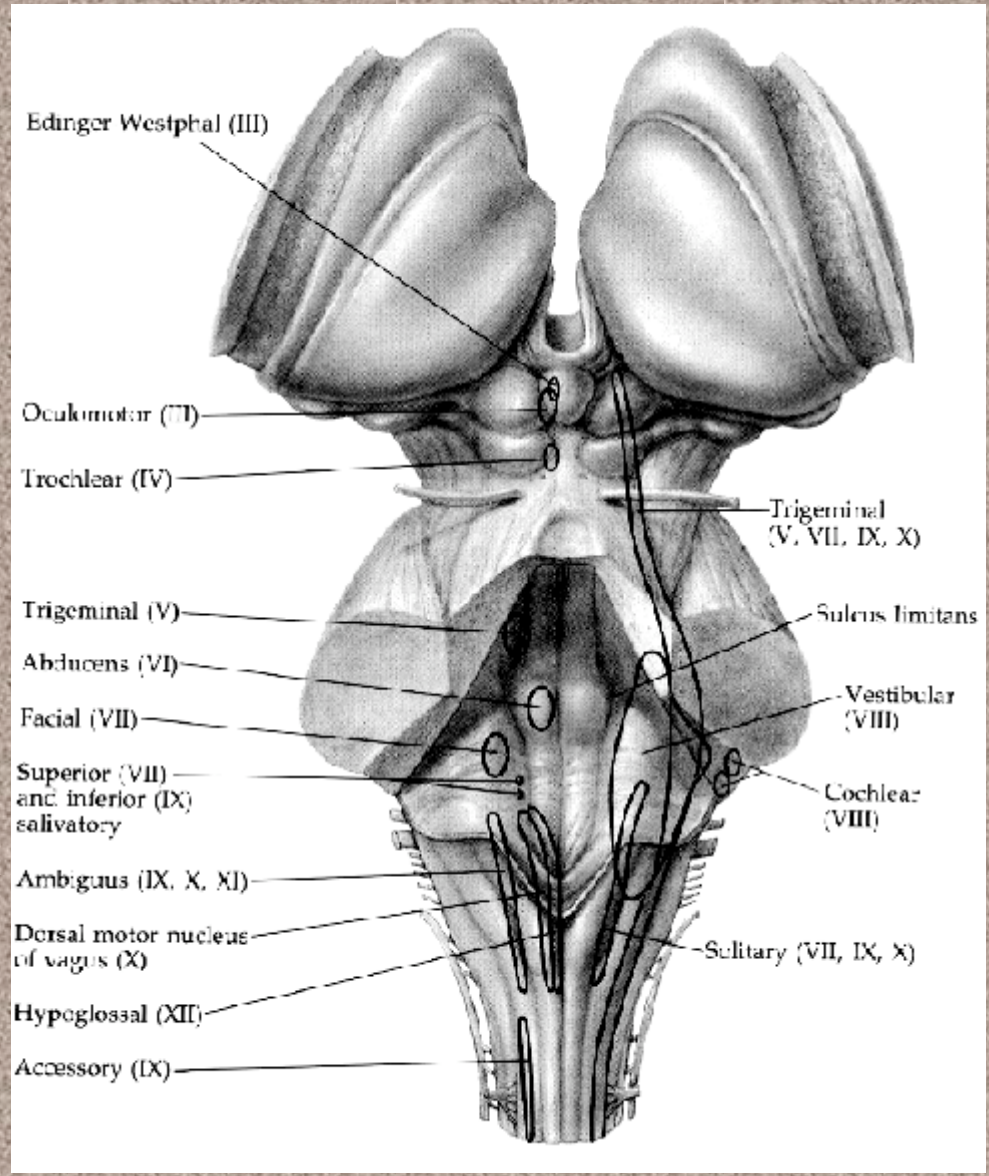
III VENTRICOLO

ACQUEDOTTO DI SILVIO

IV VENTRICOLO



VENTRALE



DORSALE

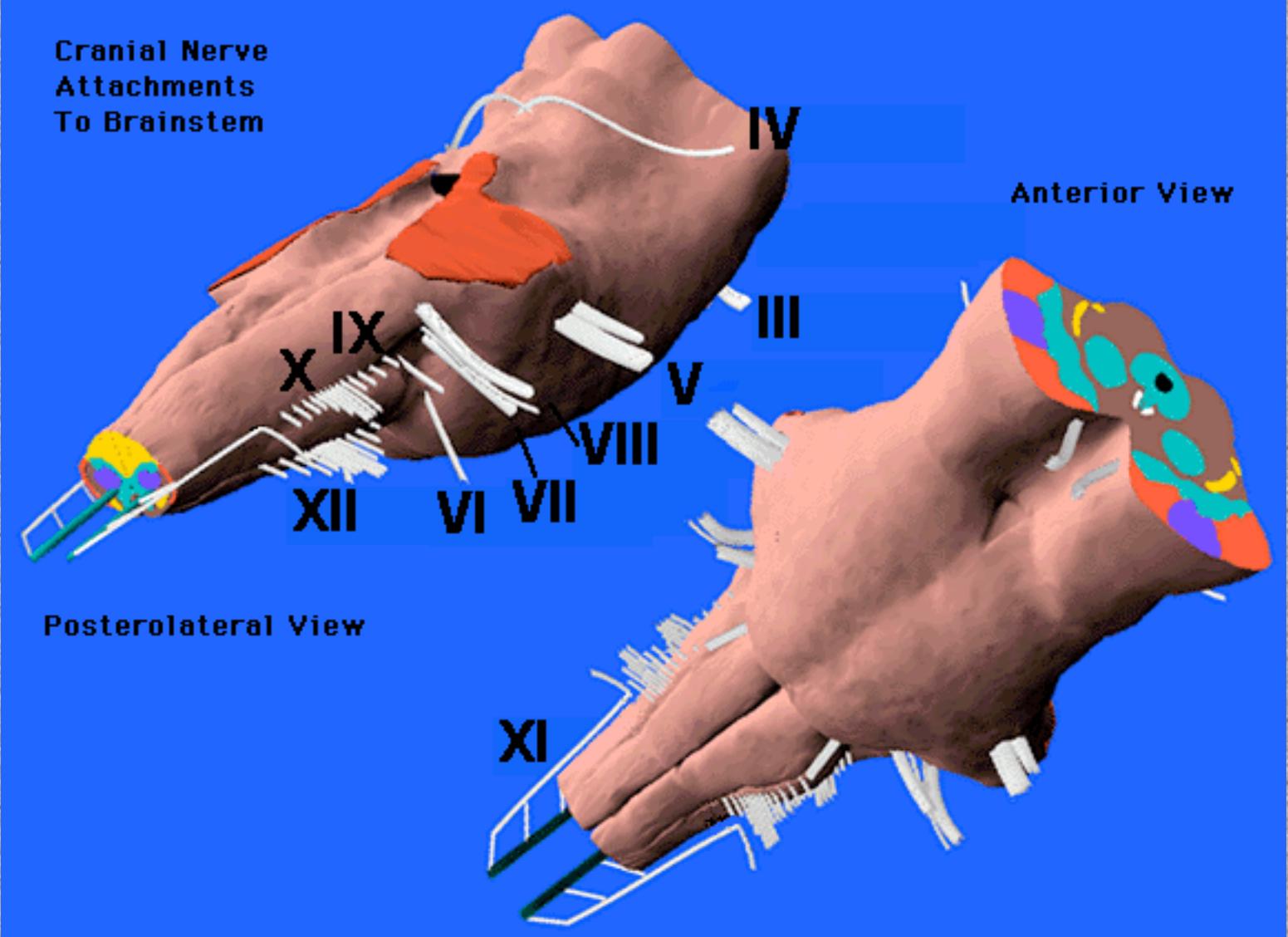
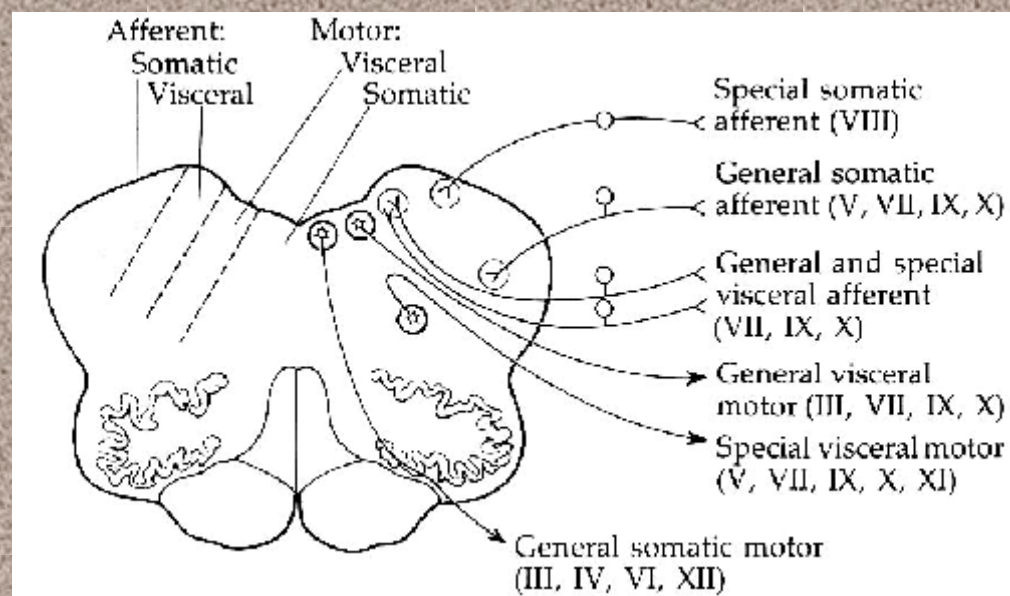


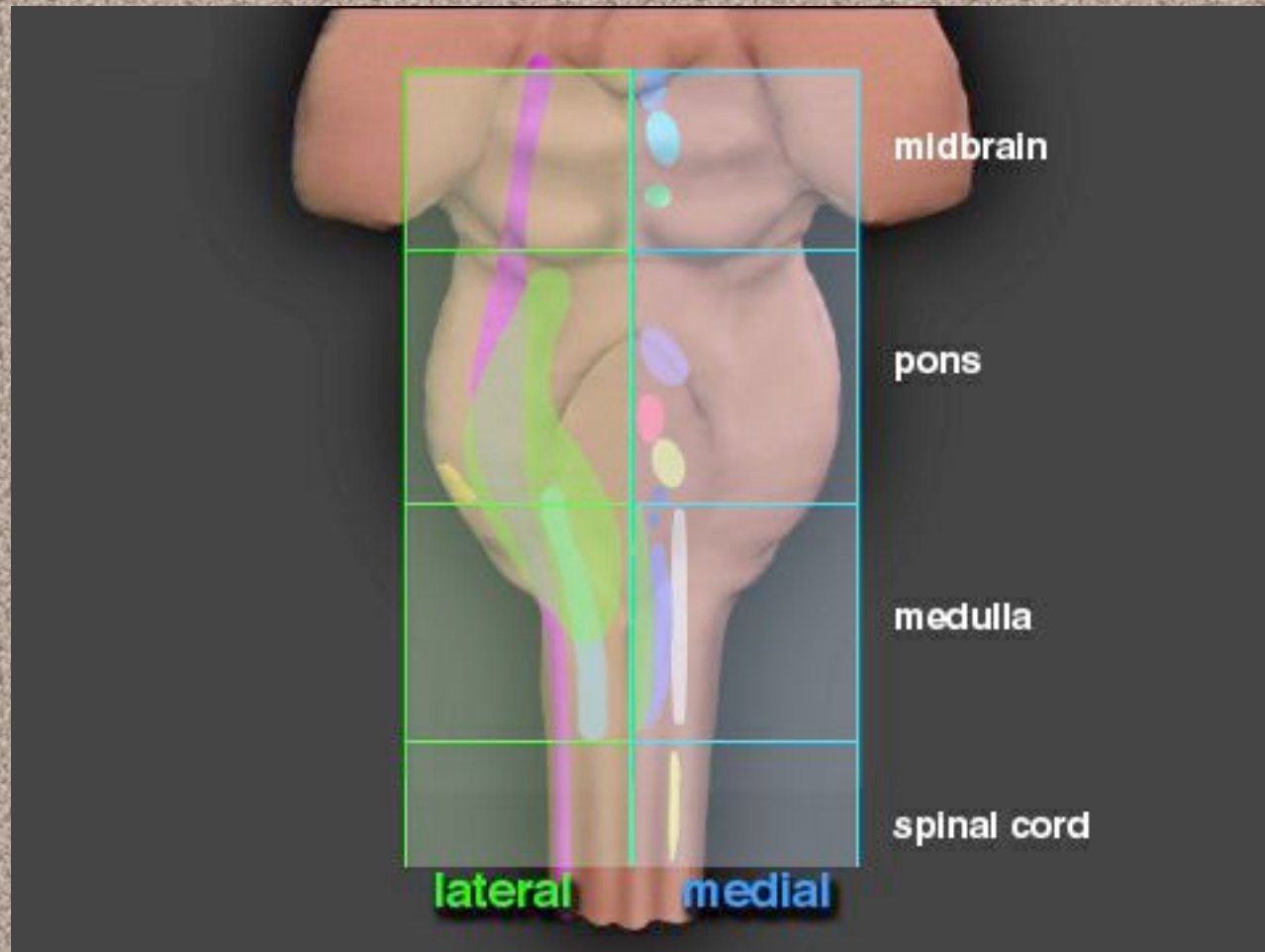
Table 2.2 Functional Classes of Cranial Nerves^a

Classification	Function	Structure Innervated	Cranial Nerve
Afferent fibers			
General somatic	Tactile, pain/temperature proprioception	Skin, mucous membranes, skeletal muscles of head and neck	V, VII, IX, X
General visceral	Mechanical, pain/temperature proprioception	Oral cavity, pharynx, larynx	V, VII, IX, X
Special somatic	Audition, balance	Cochlea, labyrinth	VIII
Special visceral	Taste, olfaction	Taste buds, olfactory epithelium	I, VII, IX, X
Motor fibers			
General somatic	Skeletal muscle control (somites)	Extraocular and tongue muscles	III, IV, VI, XII
General visceral	Autonomic control	Tear glands, sweat glands, gut	III, VII, IX, X
Special visceral	Skeletal muscle (branchiomic)	Facial expression, jaw	V, VII

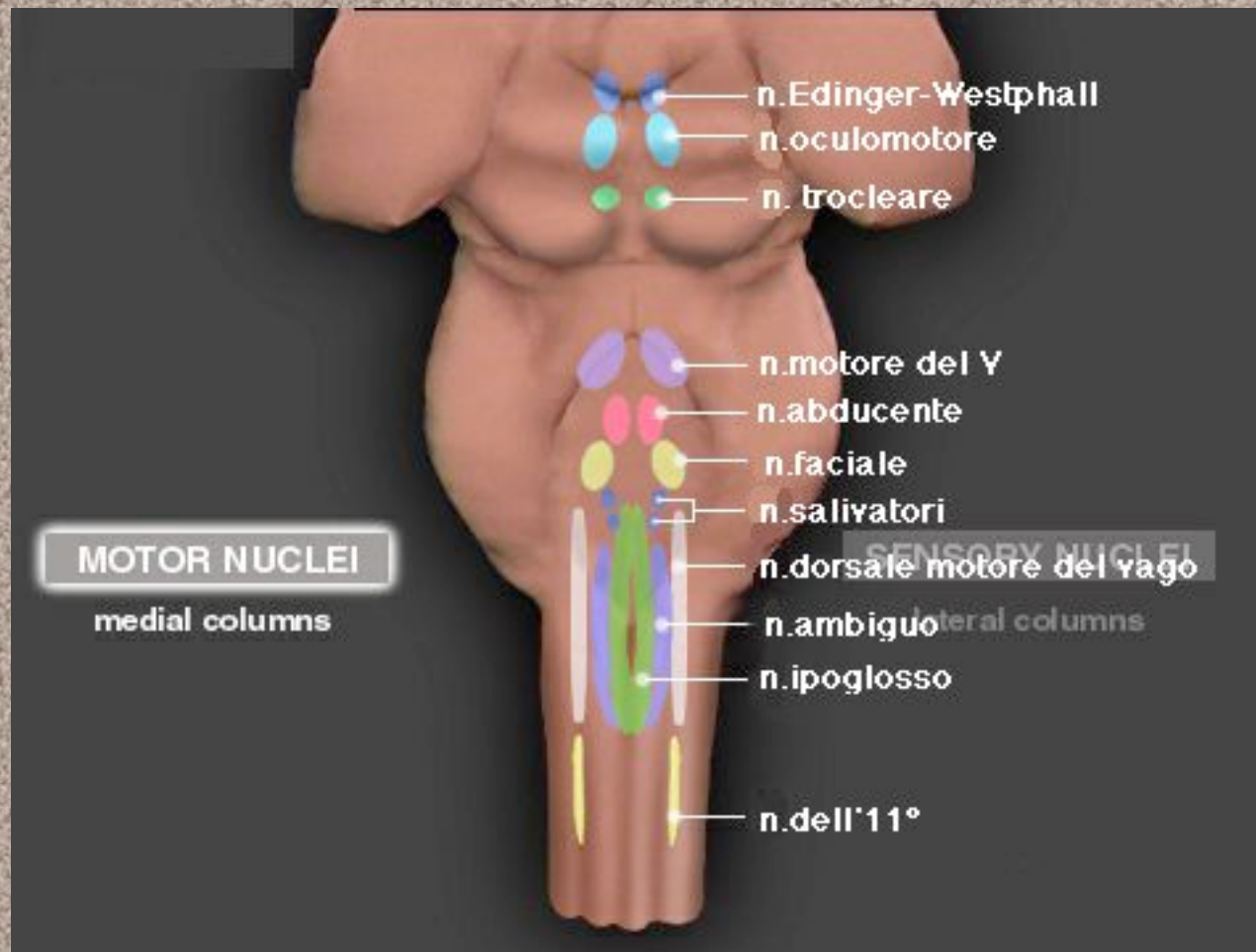
^a The optic nerve (II) is not considered in this table because it does not contain the axons of primary sensory neurons but rather those of third-order neurons in the visual pathway. The visual system is, however, considered to be part of the special somatic afferent class.



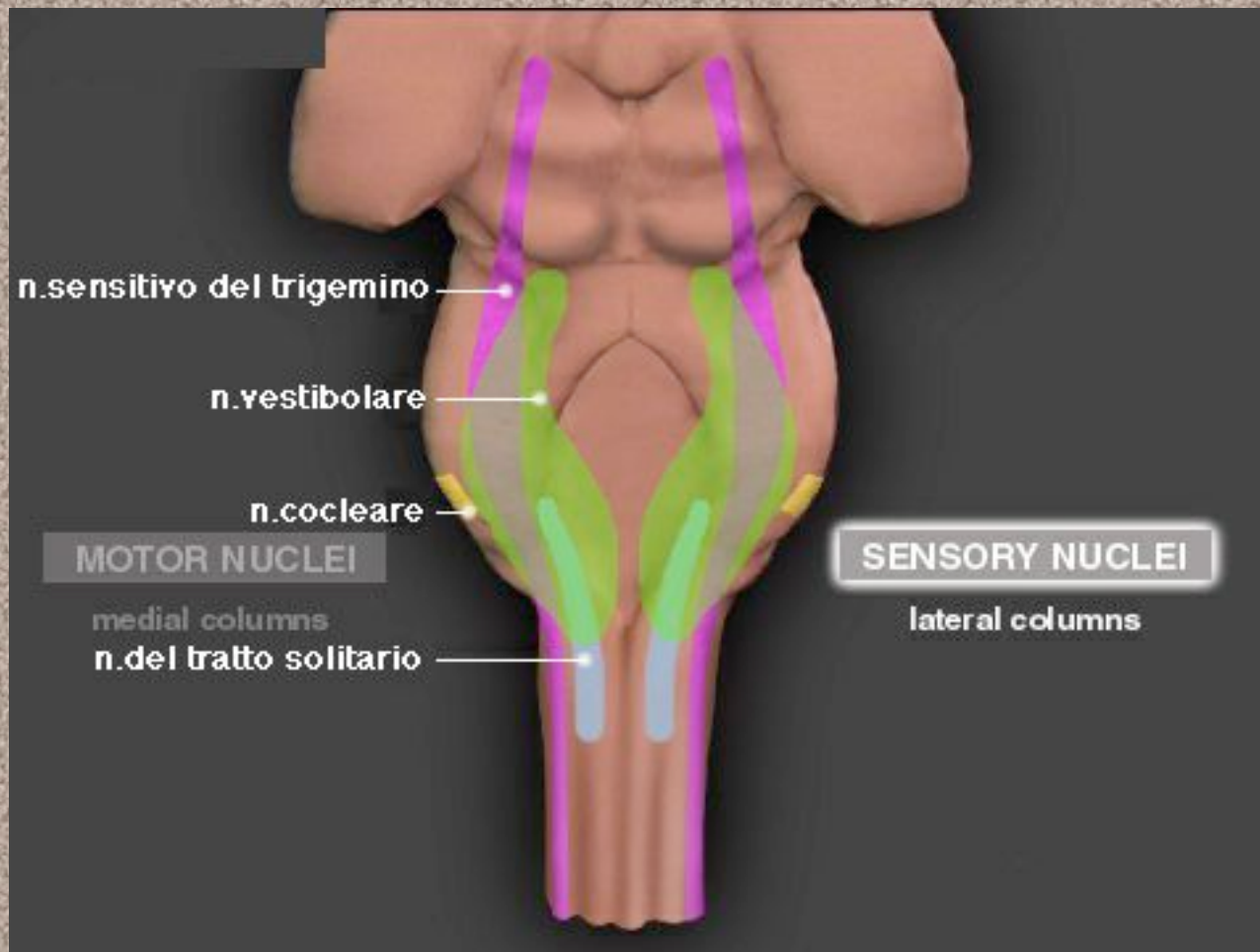
Posizione dei nuclei



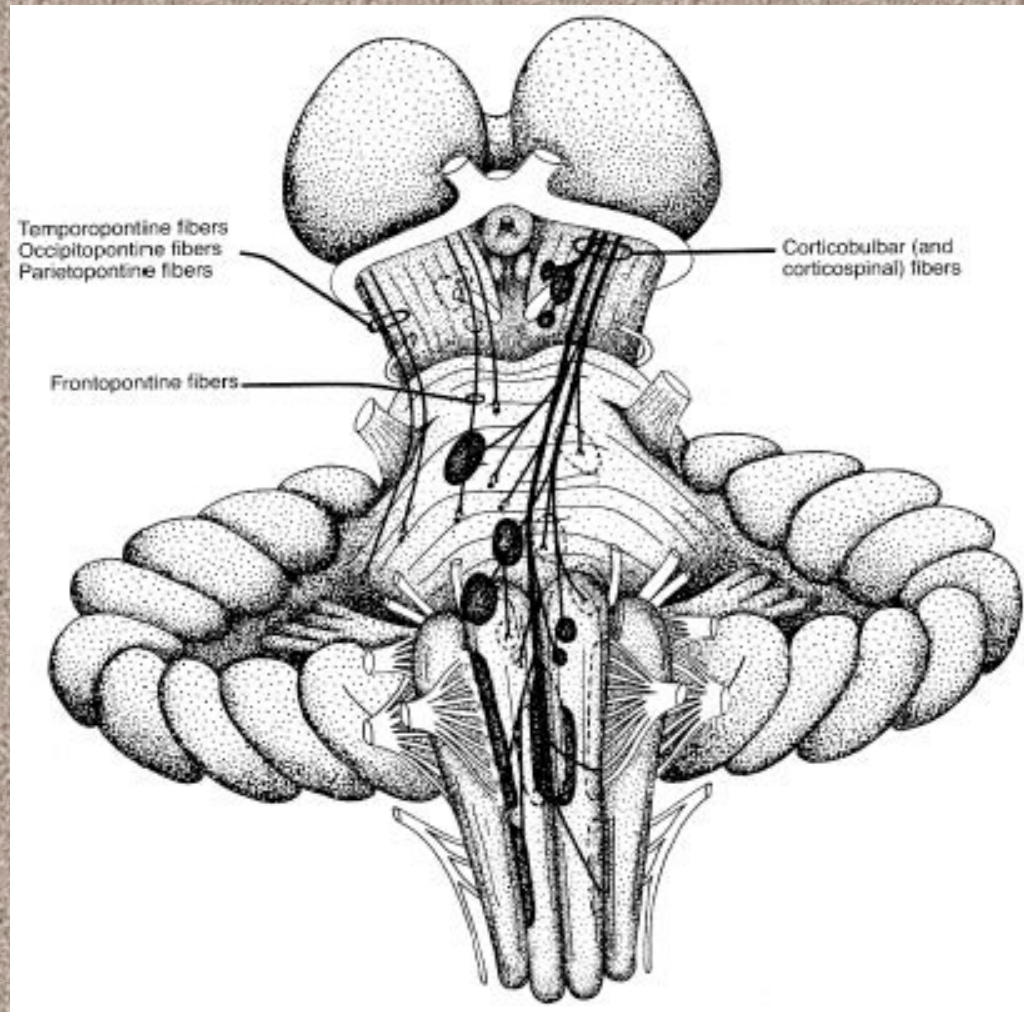
Posizione dei nuclei



Posizione dei nuclei

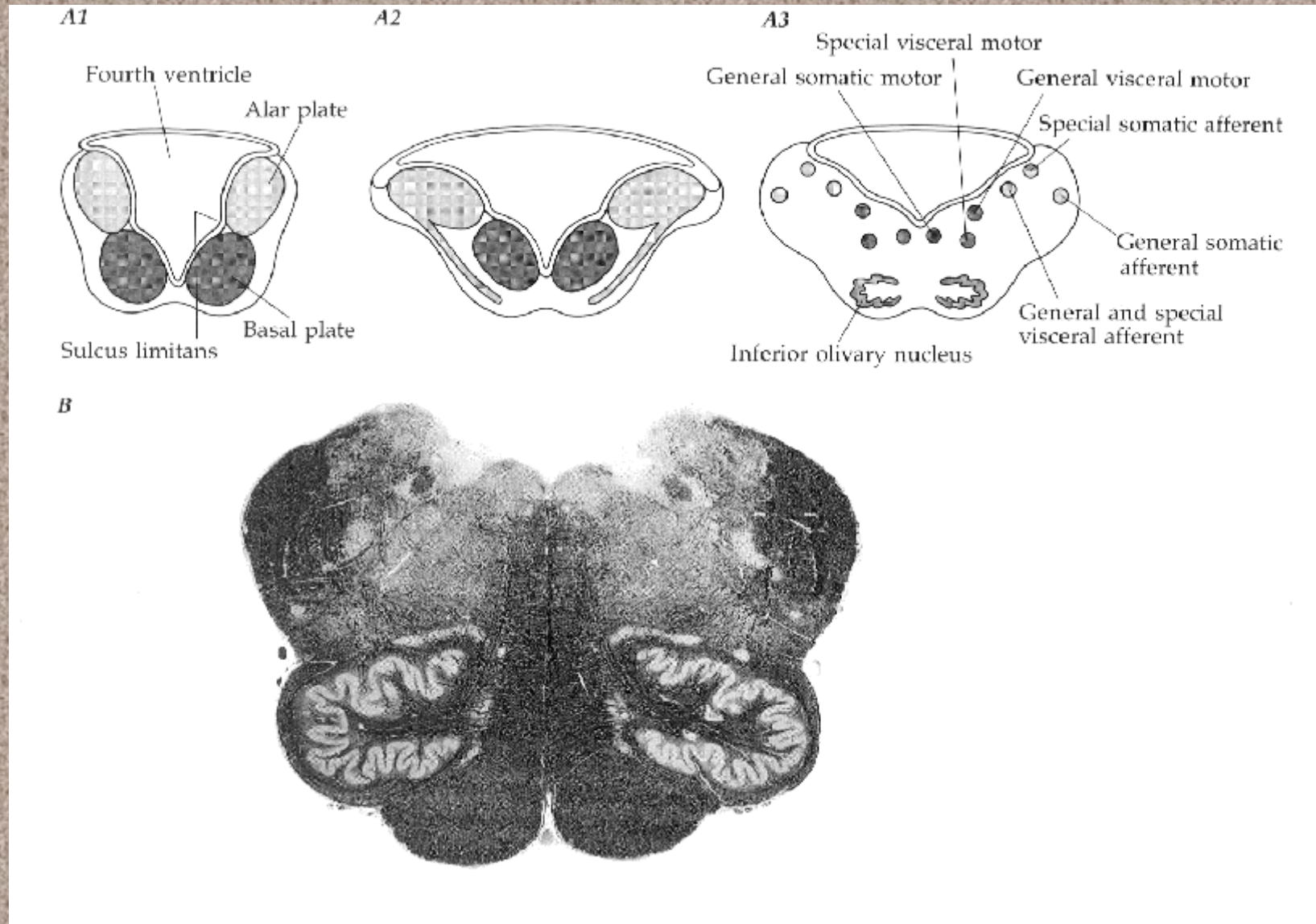


Innervazione nuclei somatomotori



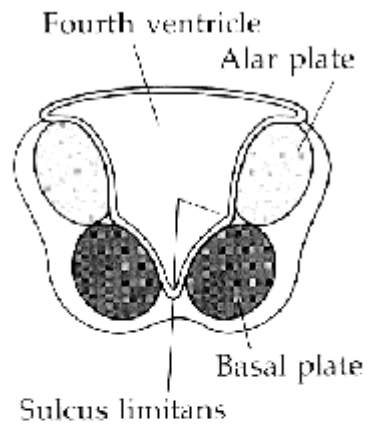
- **I nuclei somatomotori ricevono fibre discendenti provenienti dalla corteccia cerebrale.**
- **I tratti coinvolti sono il tratto cortico-mesencefalico, il tratto cortico-pontino, il tratto cortico-bulbare.**

Midollo allungato

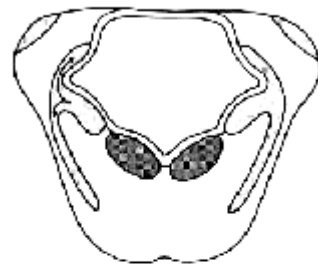


Ponte

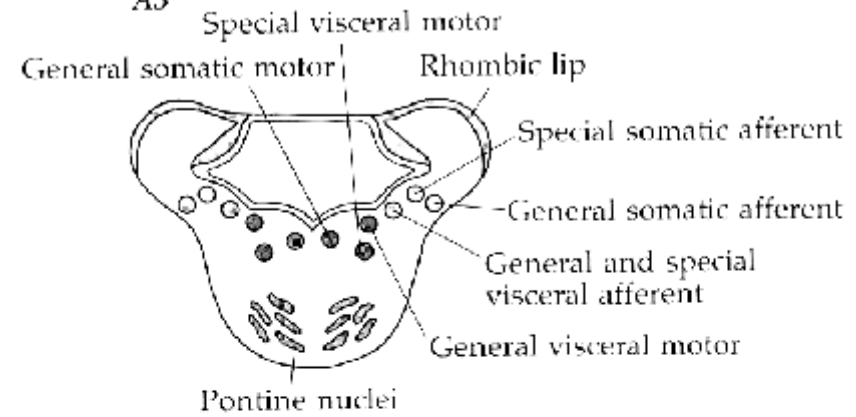
A1



A2



A3



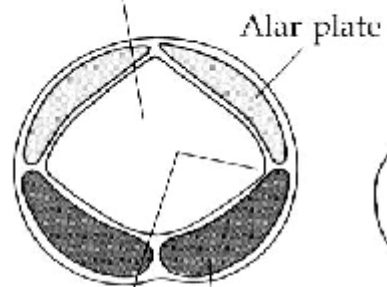
B



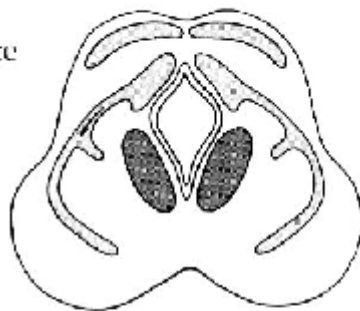
Mesencefalo

A1

Cerebral aqueduct

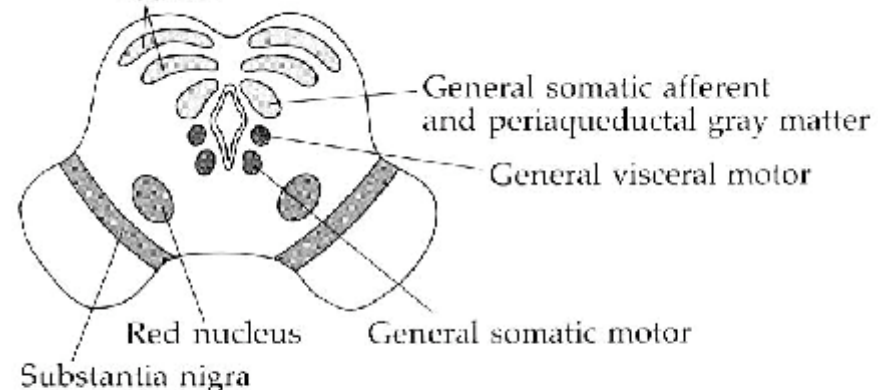


A2

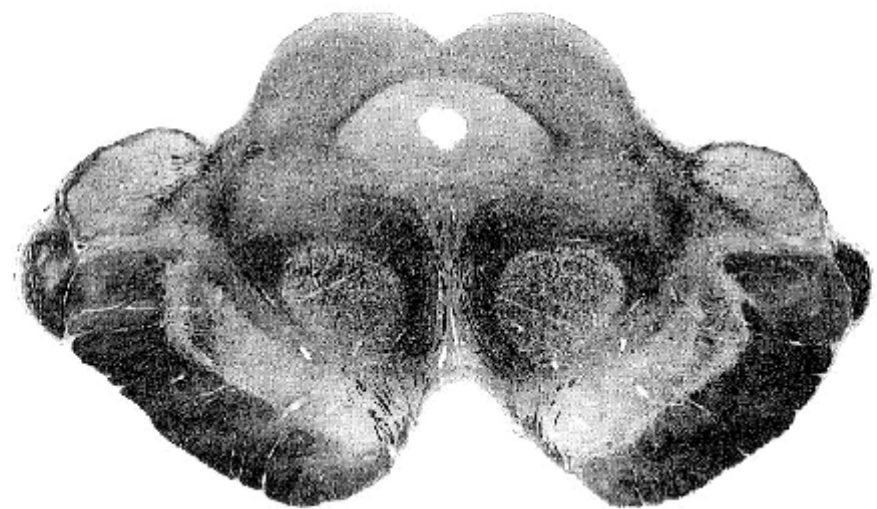


A3

Tectum



B

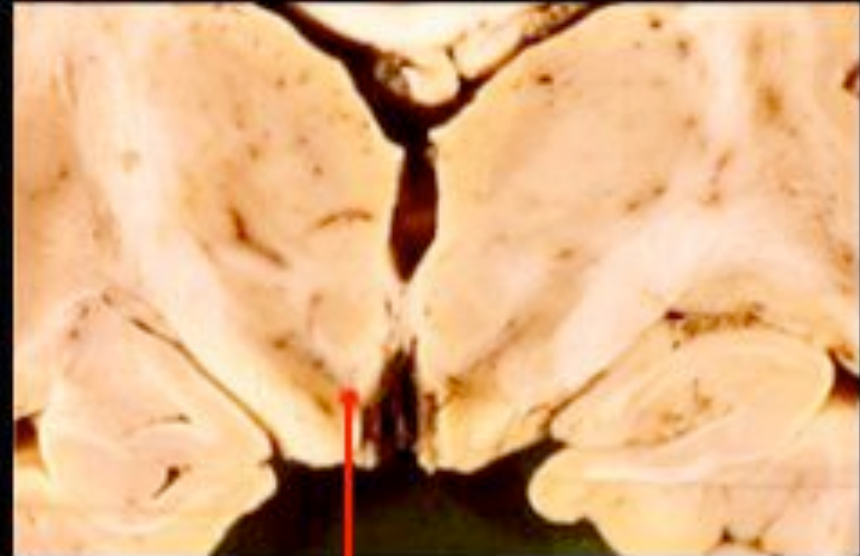


Sostanza nera

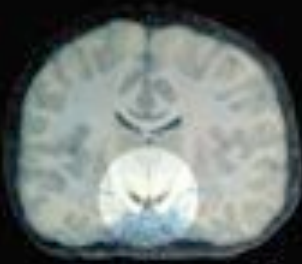
normal



affected



substantia nigra



coronal section

Formazione Reticolare

