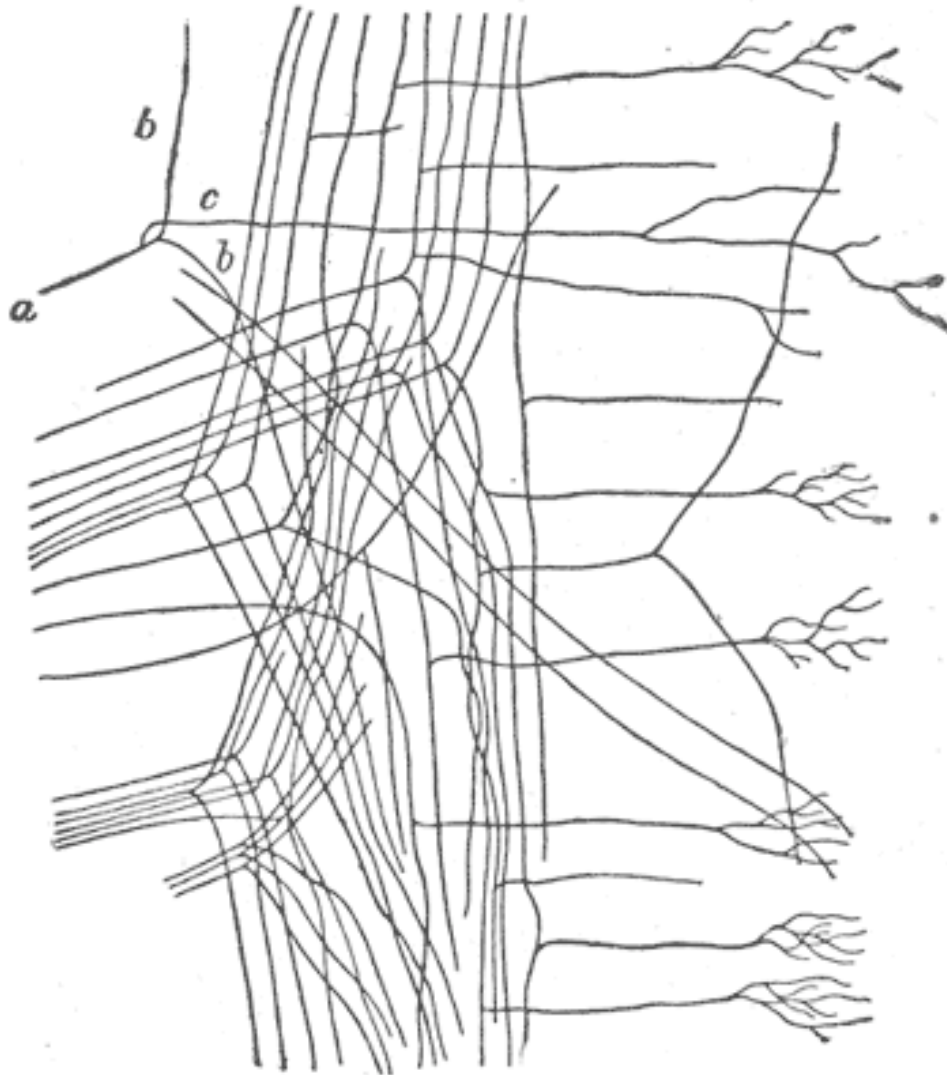




Nervi spinali e plessi

Concetto di plesso



I rami periferici dei nervi spinali confluiscono in in altre strutture, da cui si dipartono i cosiddetti rami terminali

NON esiste una fusione tra fibre nervose, che al contrario possono ramificarsi.

PLESSI

- ❑ I plessi sono formati dai rami ventrali dei nervi spinali
- ❑ Non formano plessi i rami dorsali
- ❑ Non formano plessi i rami ventrali dei nervi toracici, che danno origine ai nervi intercostali
- ❑ I plessi si suddividono in:
 - ❑ Cervicale
 - ❑ Brachiale
 - ❑ Lombare
 - ❑ Sacrale e coccigeo

RAMI DORSALI

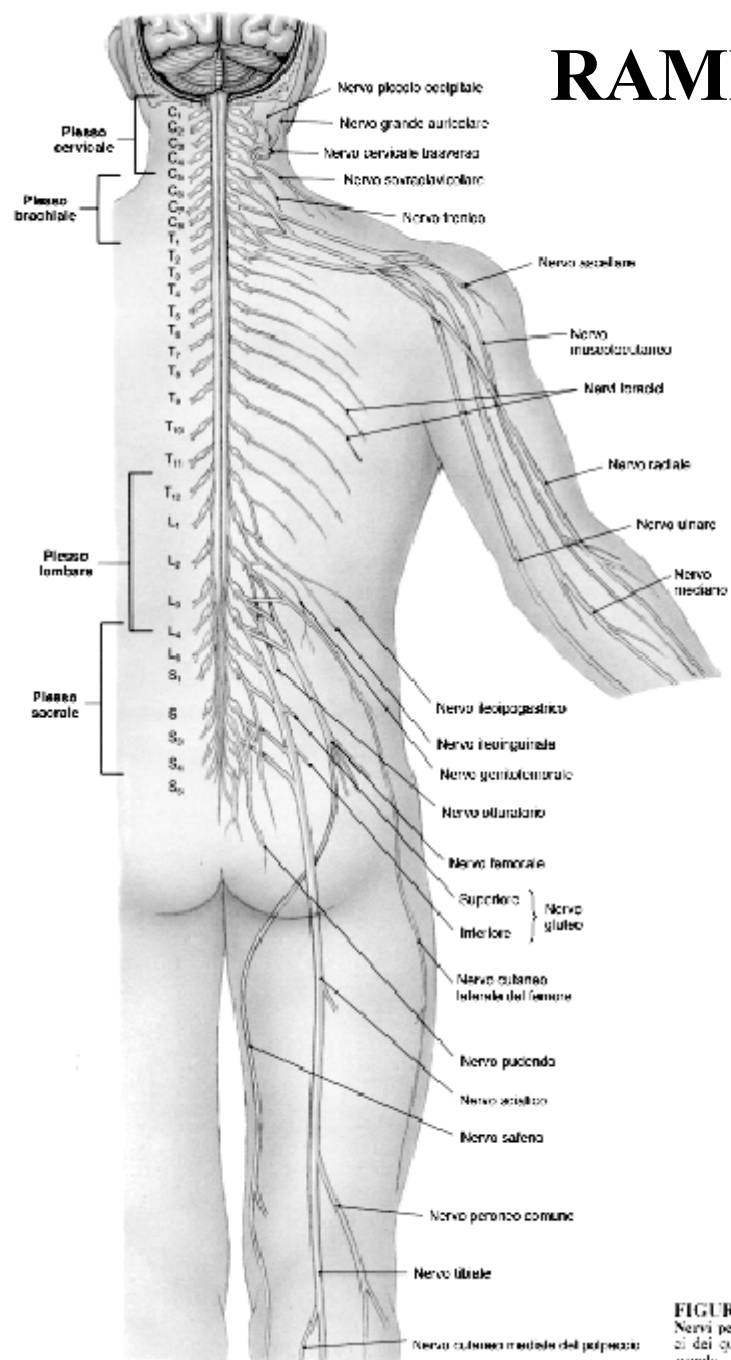


FIGURA 14-9
Nervi periferici e plessi nervosi. Visione d'insieme dei nervi periferici dei quattro principali plessi nervosi: cervicale, brachiale, lombare e sacrale.

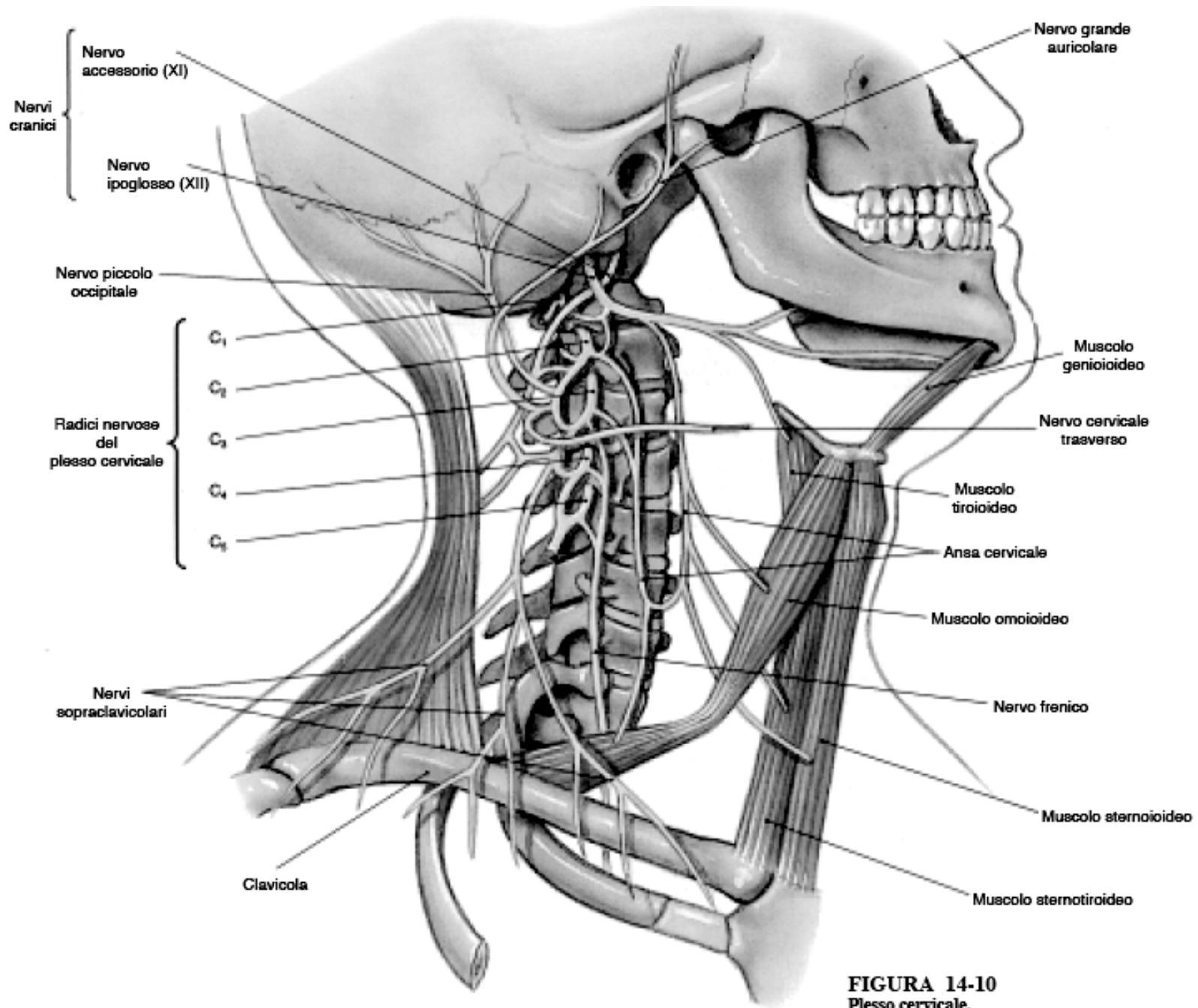
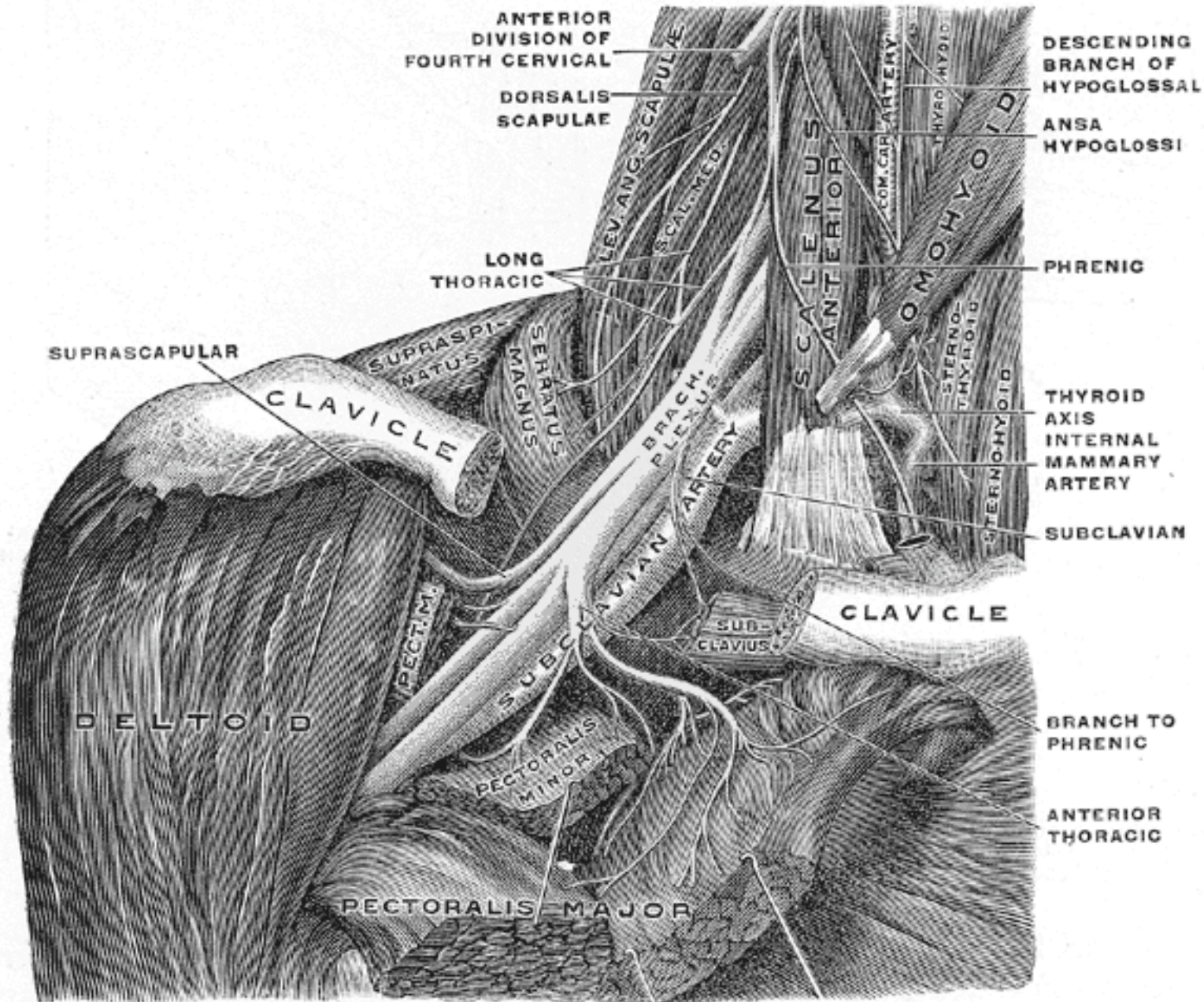


FIGURA 14-10
Plesso cervicale.



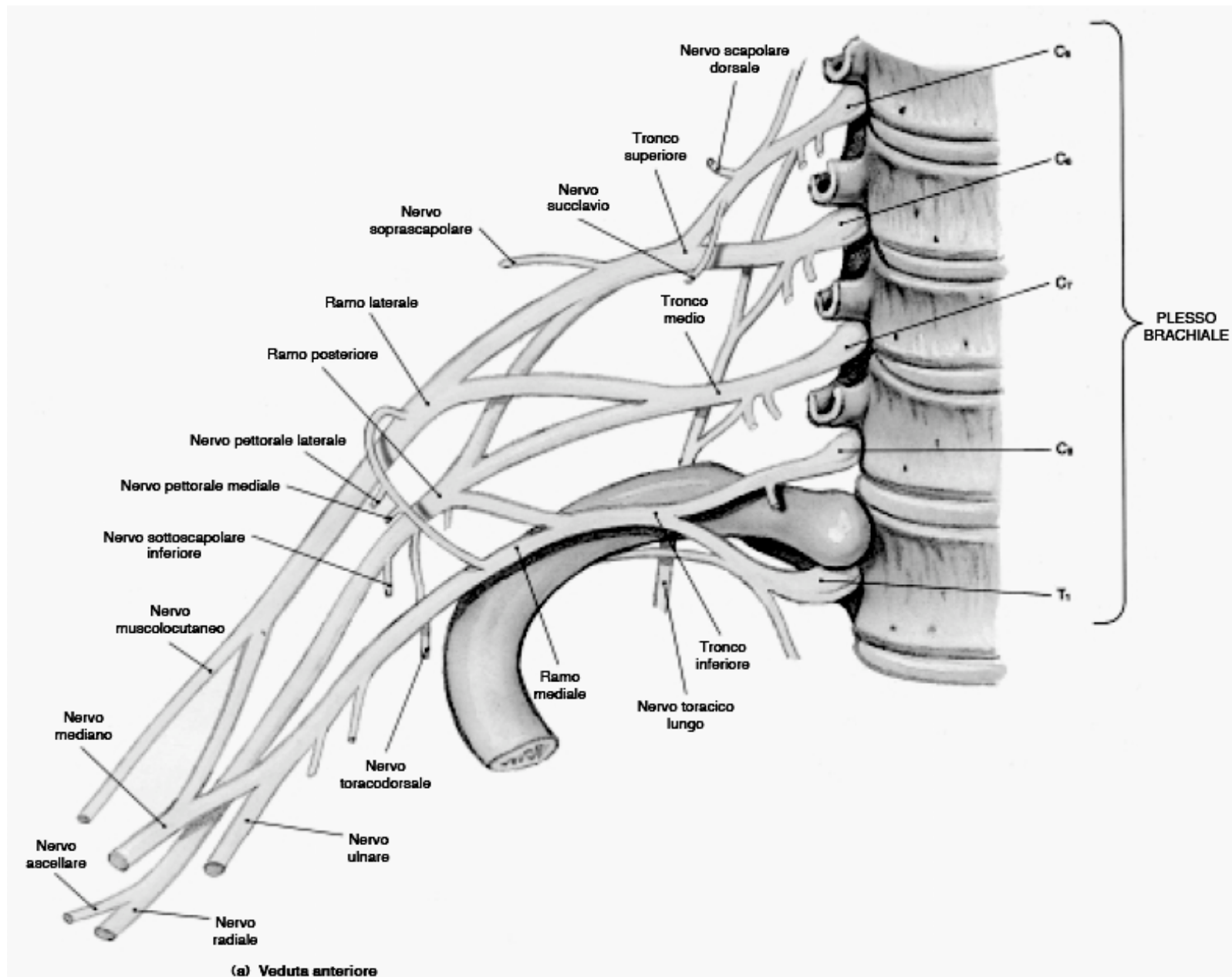
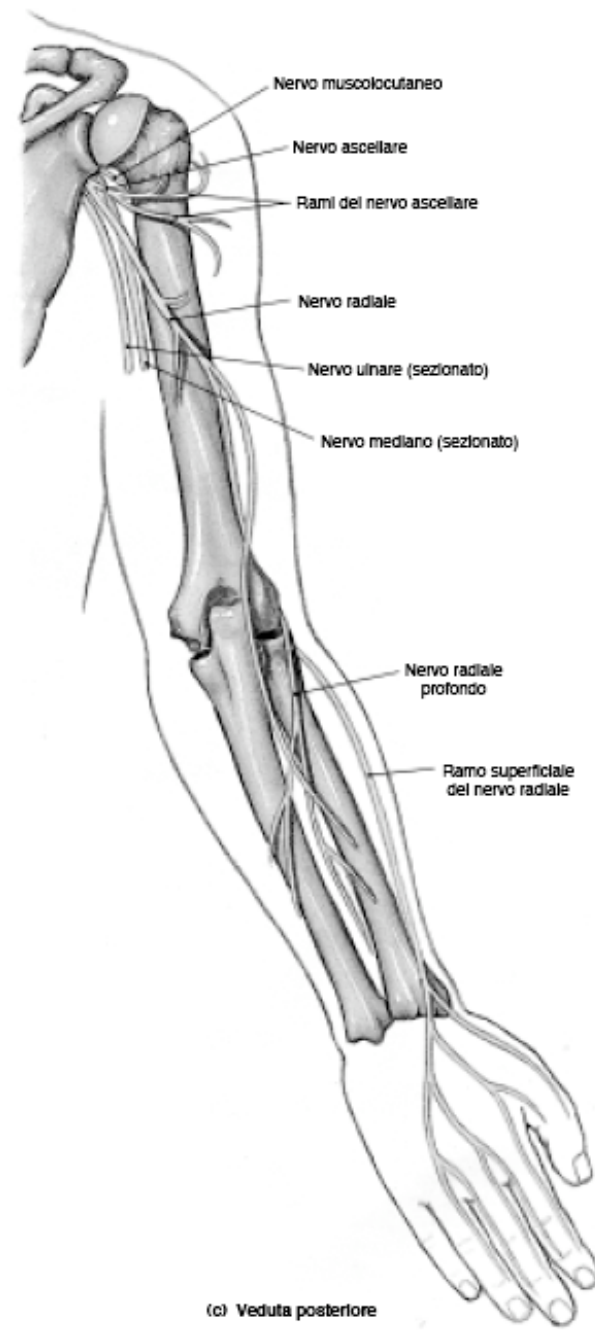
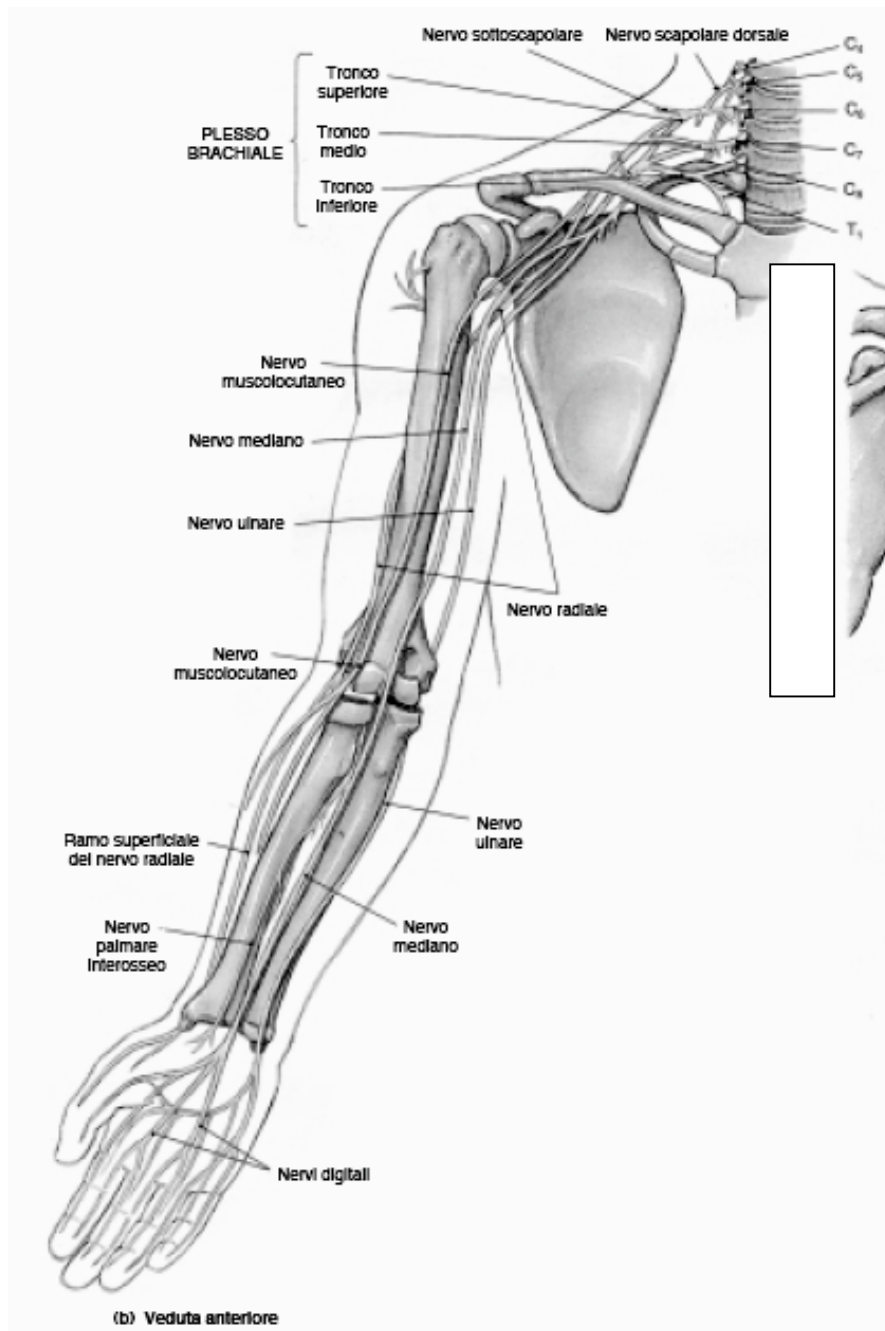
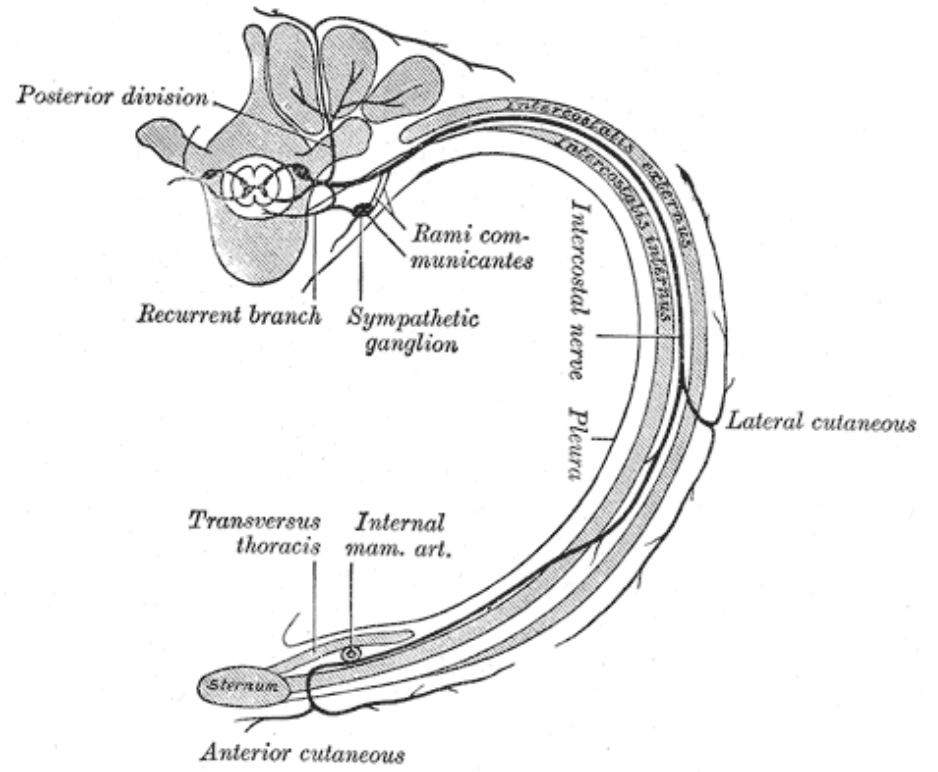
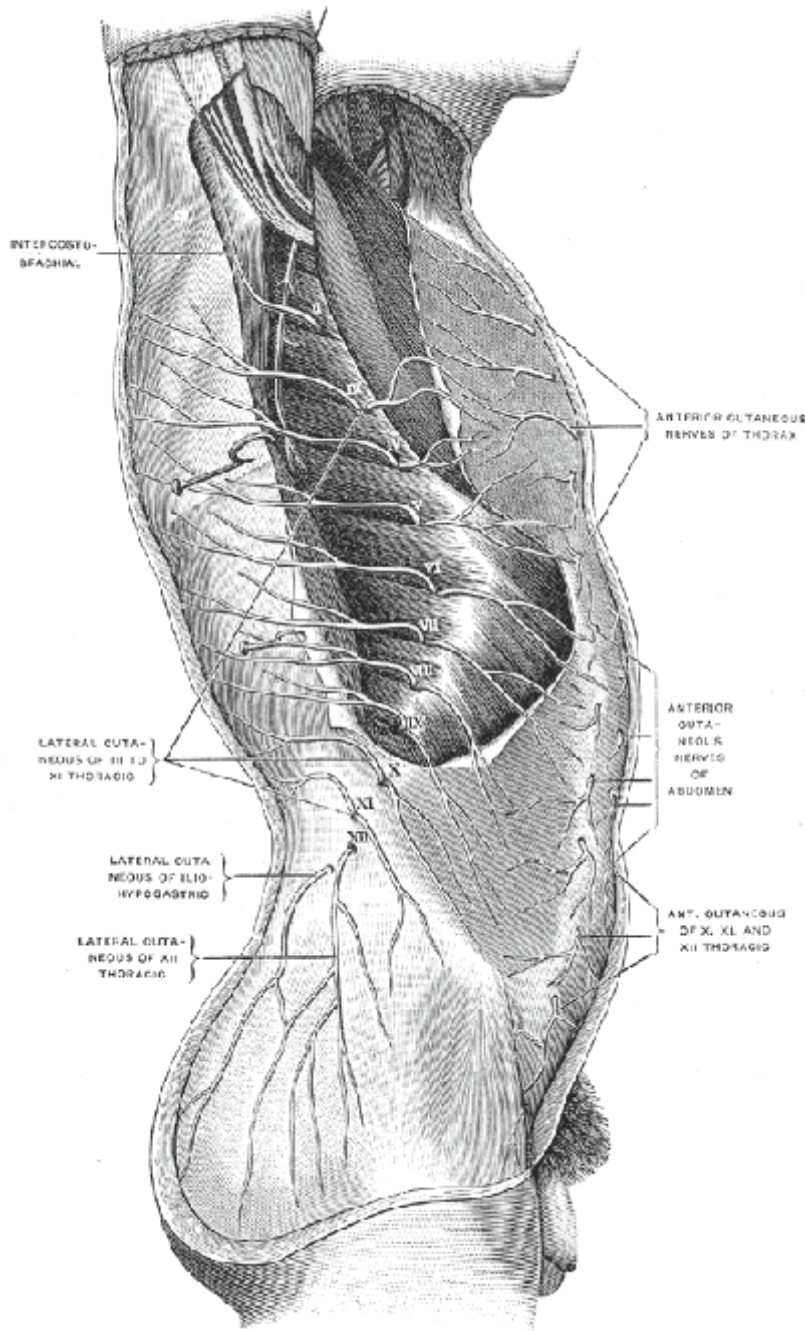
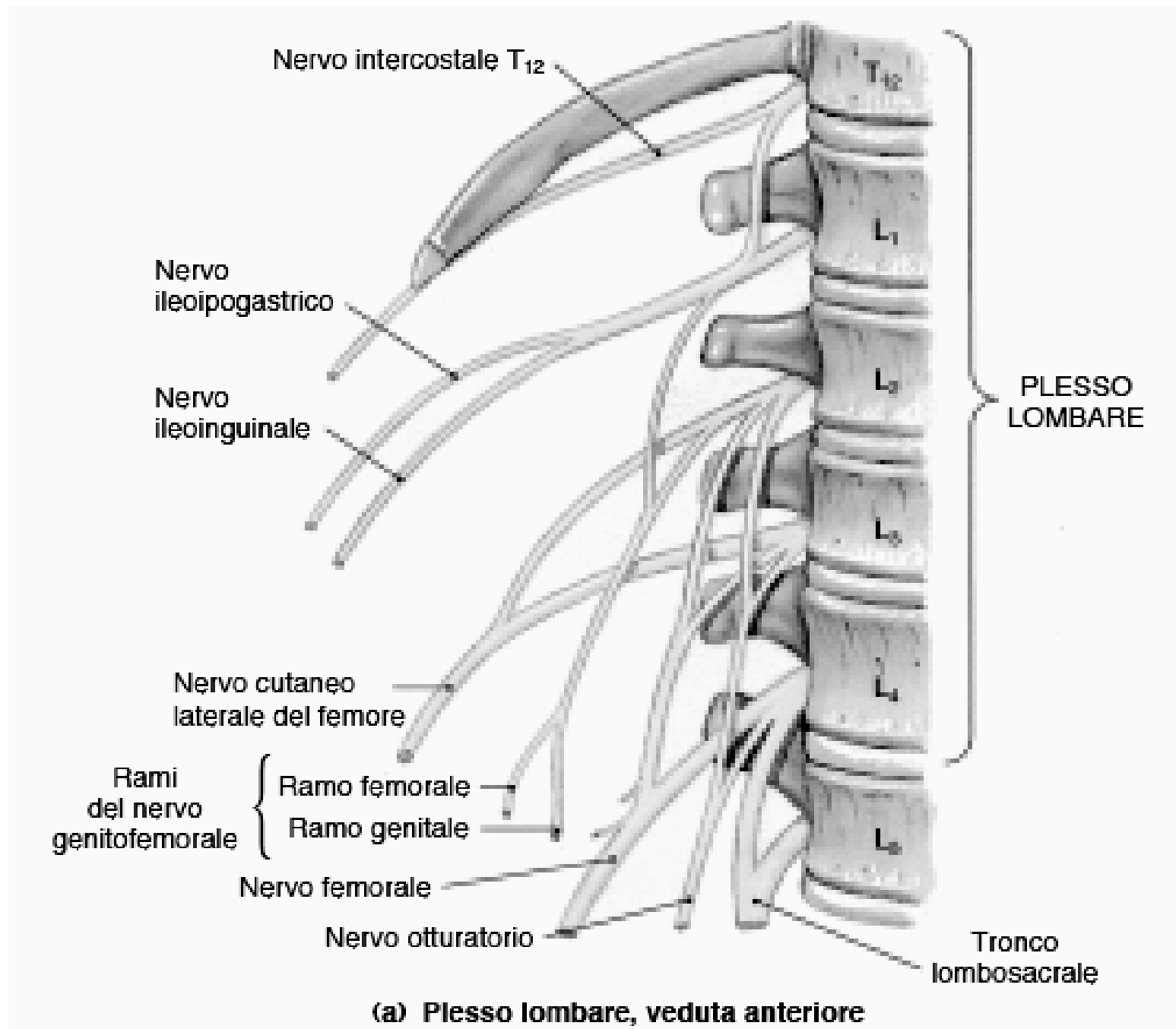
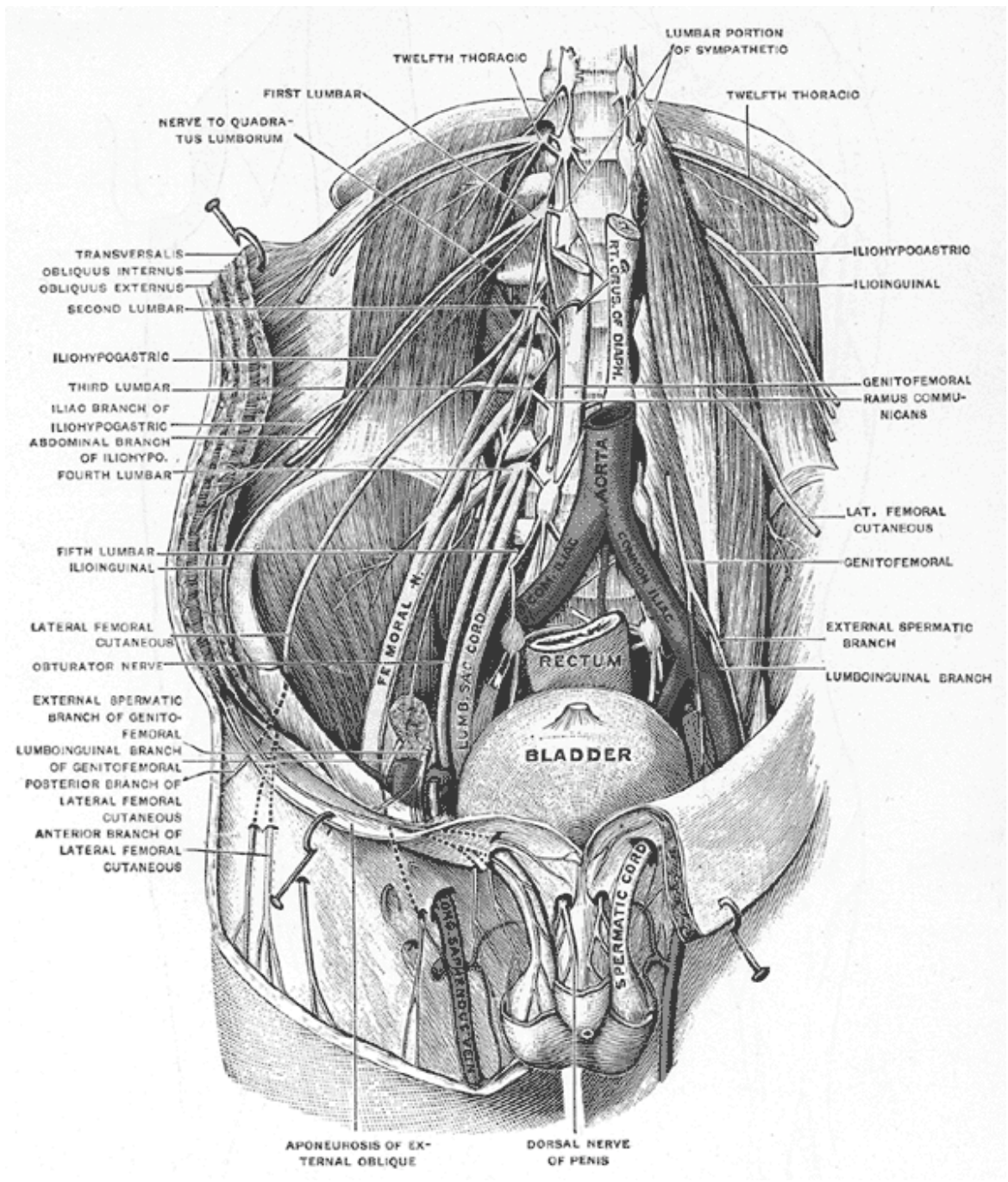


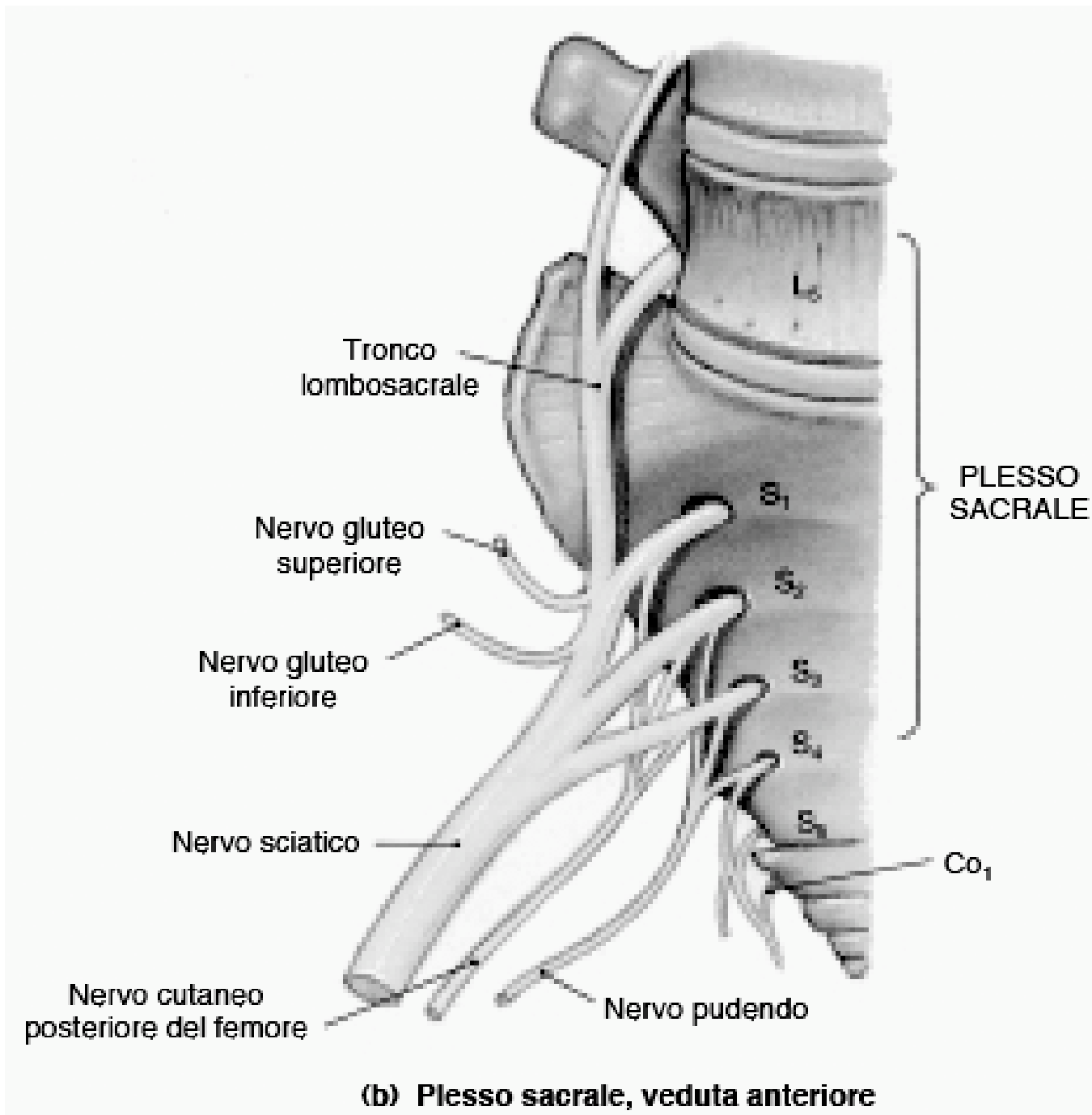
FIGURA 14-11
Plesso brachiale. (a) I tronchi e i rami del plesso brachiale.

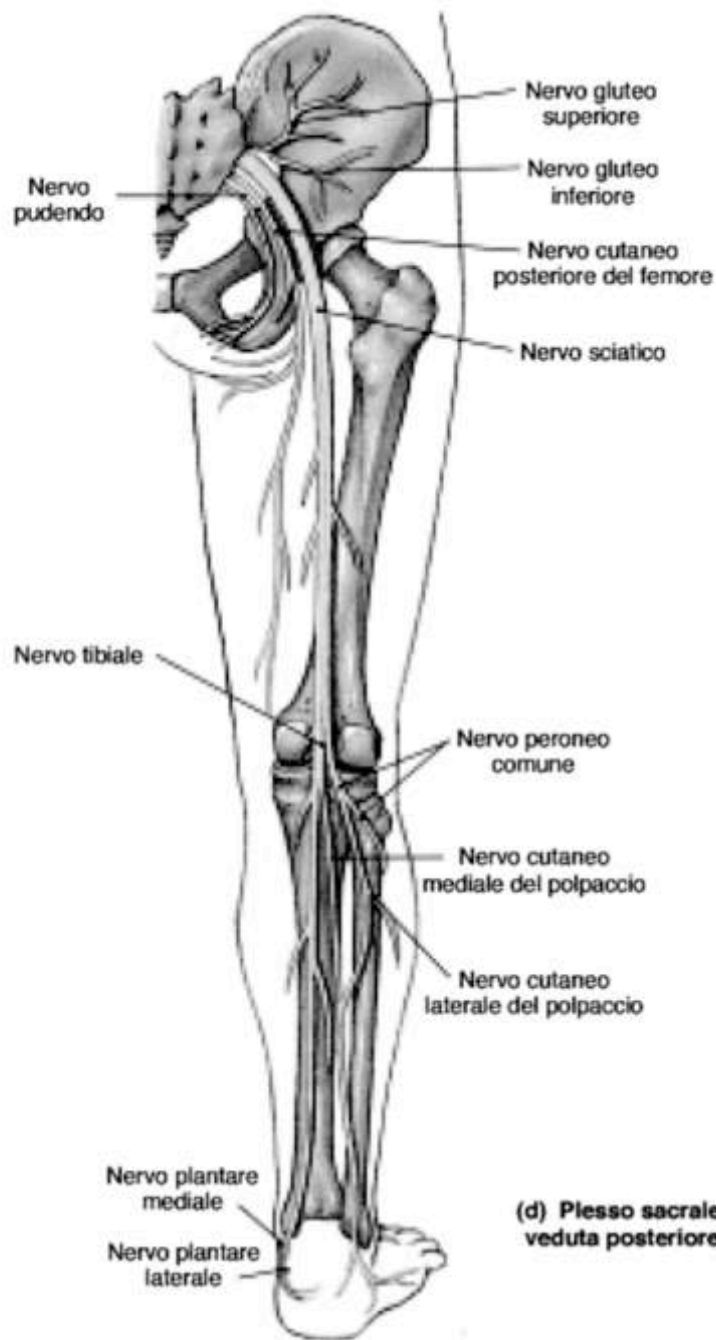




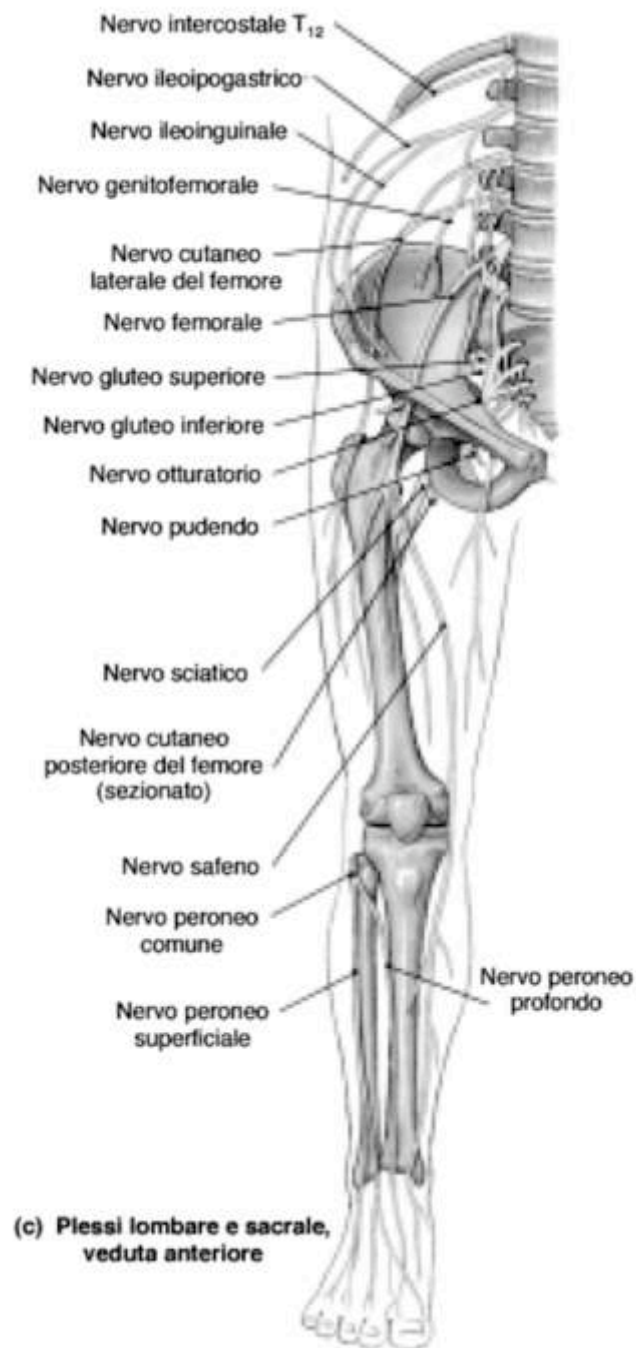








(d) Plesso sacrale, veduta posteriore



(c) Plessi lombare e sacrale, veduta anteriore