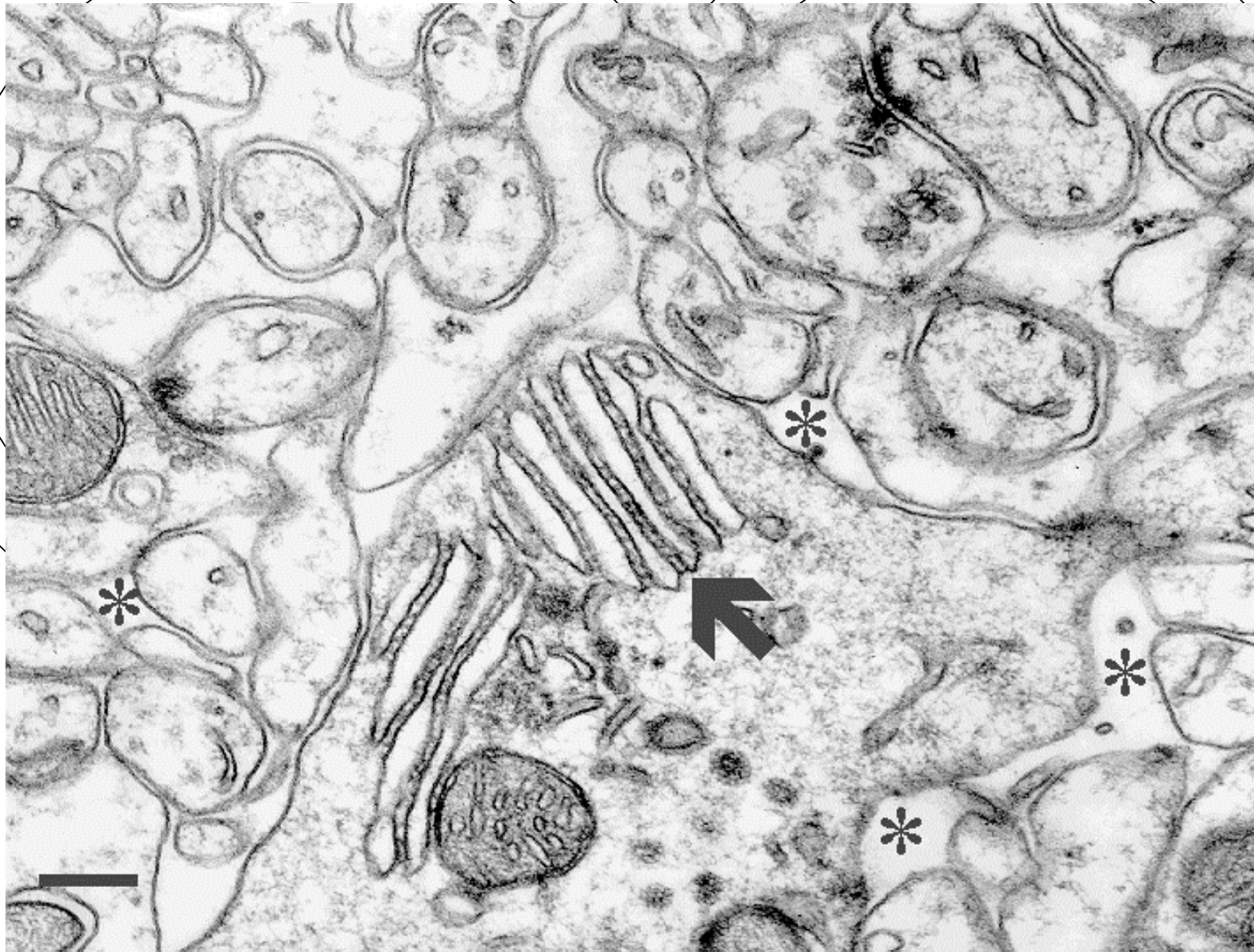


# Artefatti più comuni

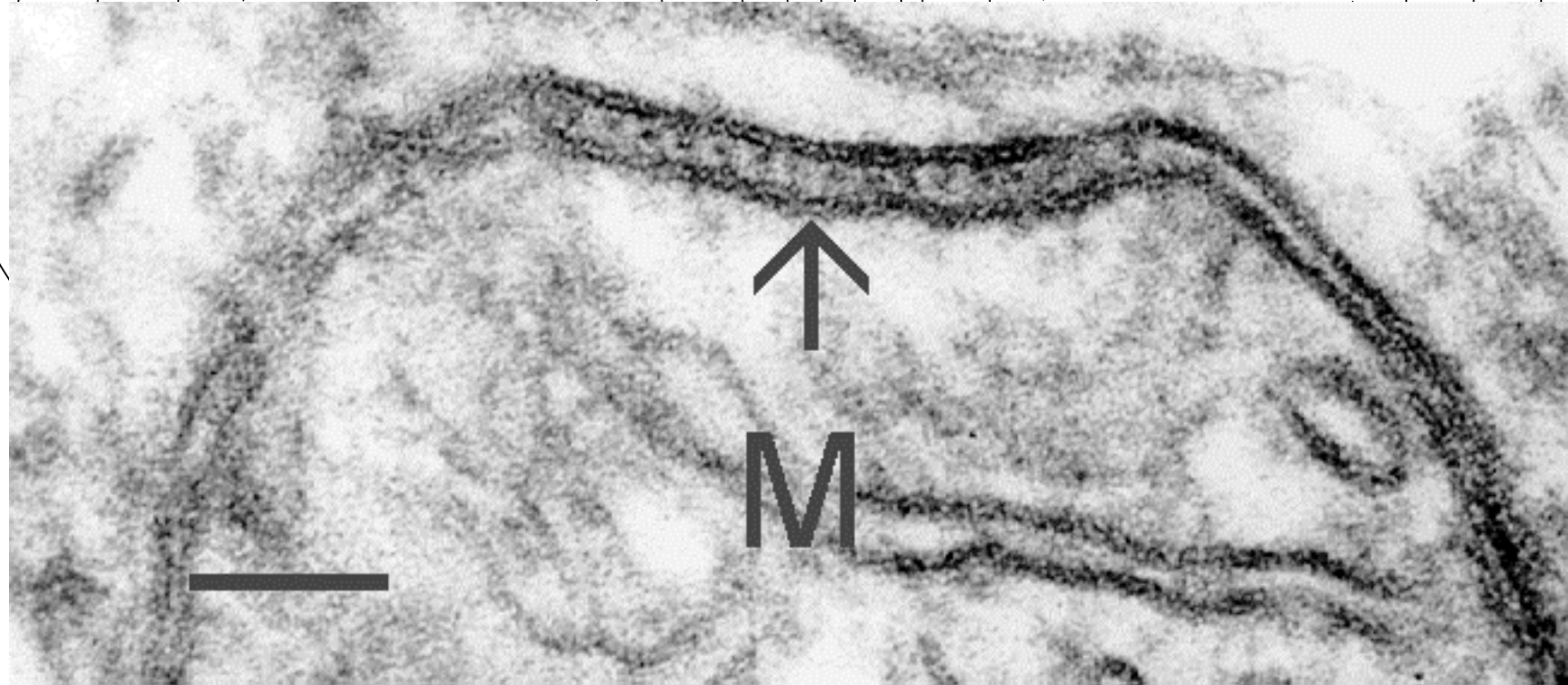
- Molte strutture descritte nel sistema nervoso con grande enfasi si sono rivelate degli artefatti dovuti a:

- ▶ Anossia o ipossia
- ▶ Impurezze del fissativo
- ▶ Traumi meccanici
- ▶ Difficoltà di penetrazione del fissativo
- ▶ Necrosi e autolisi

# Dilatazione degli spazi - Anossia



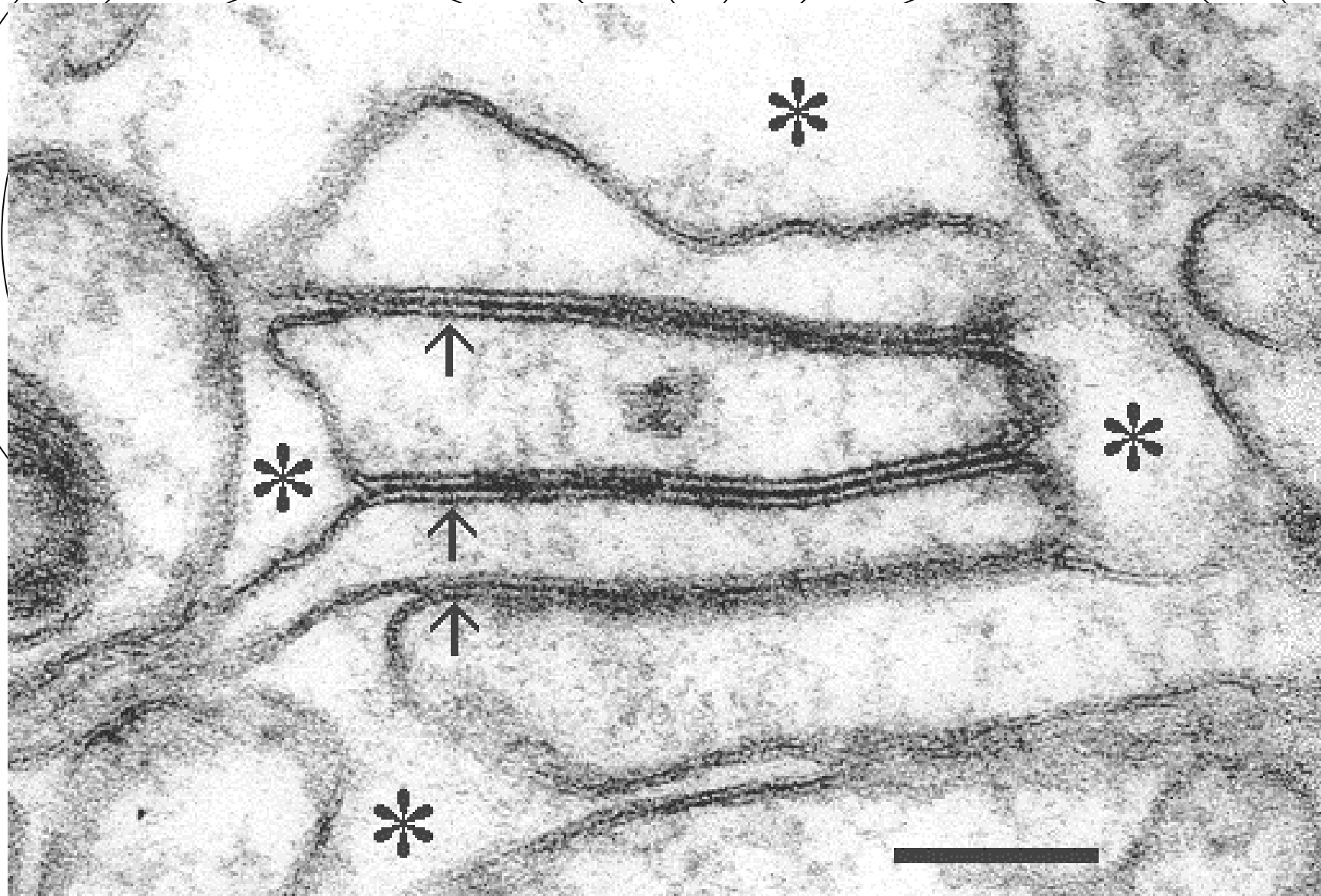
Giunzioni tra le membrane mitocondriali  
**Anossia**



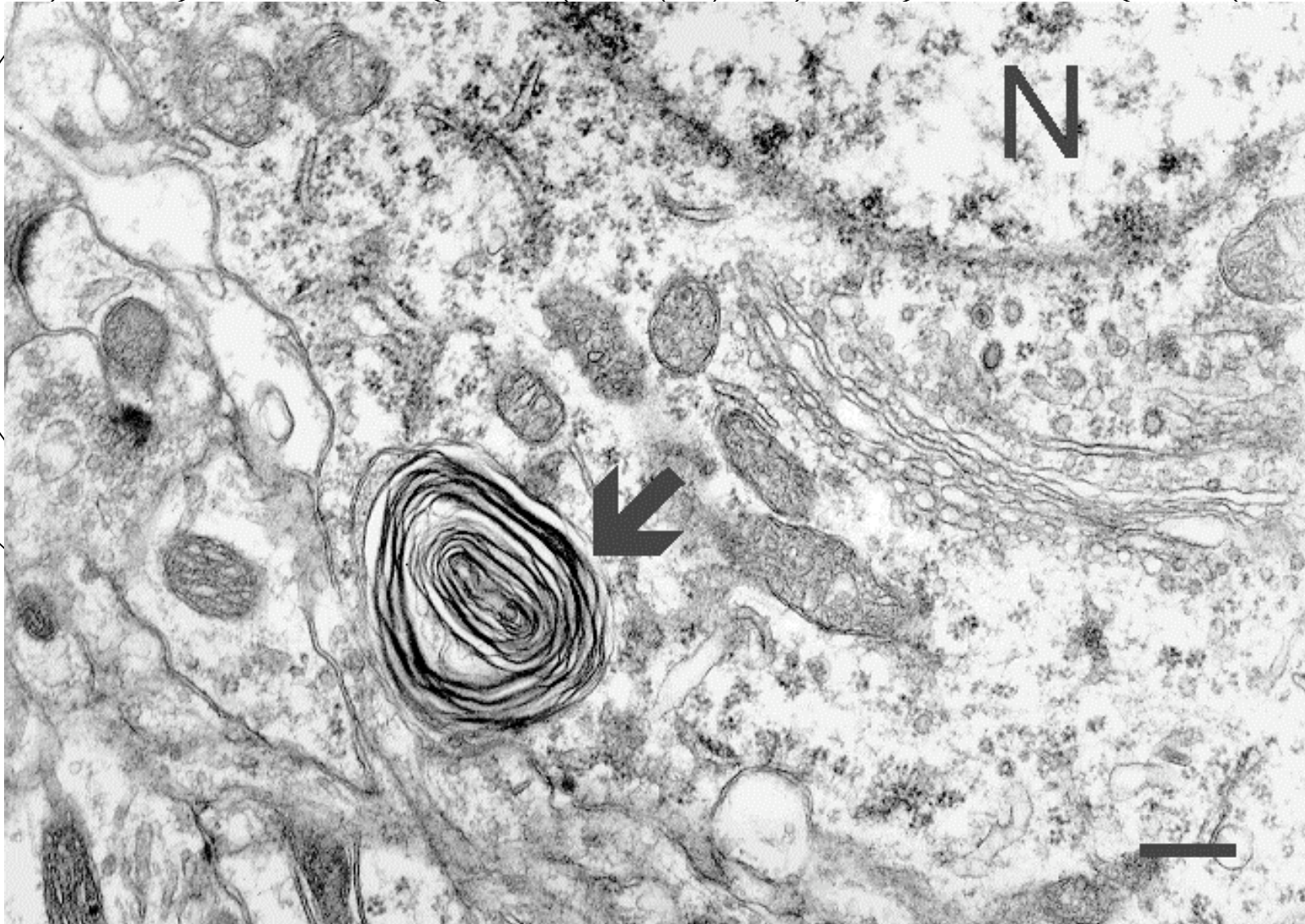
Mitocondri associati alla membrana  
plasmatica - **ipossia**



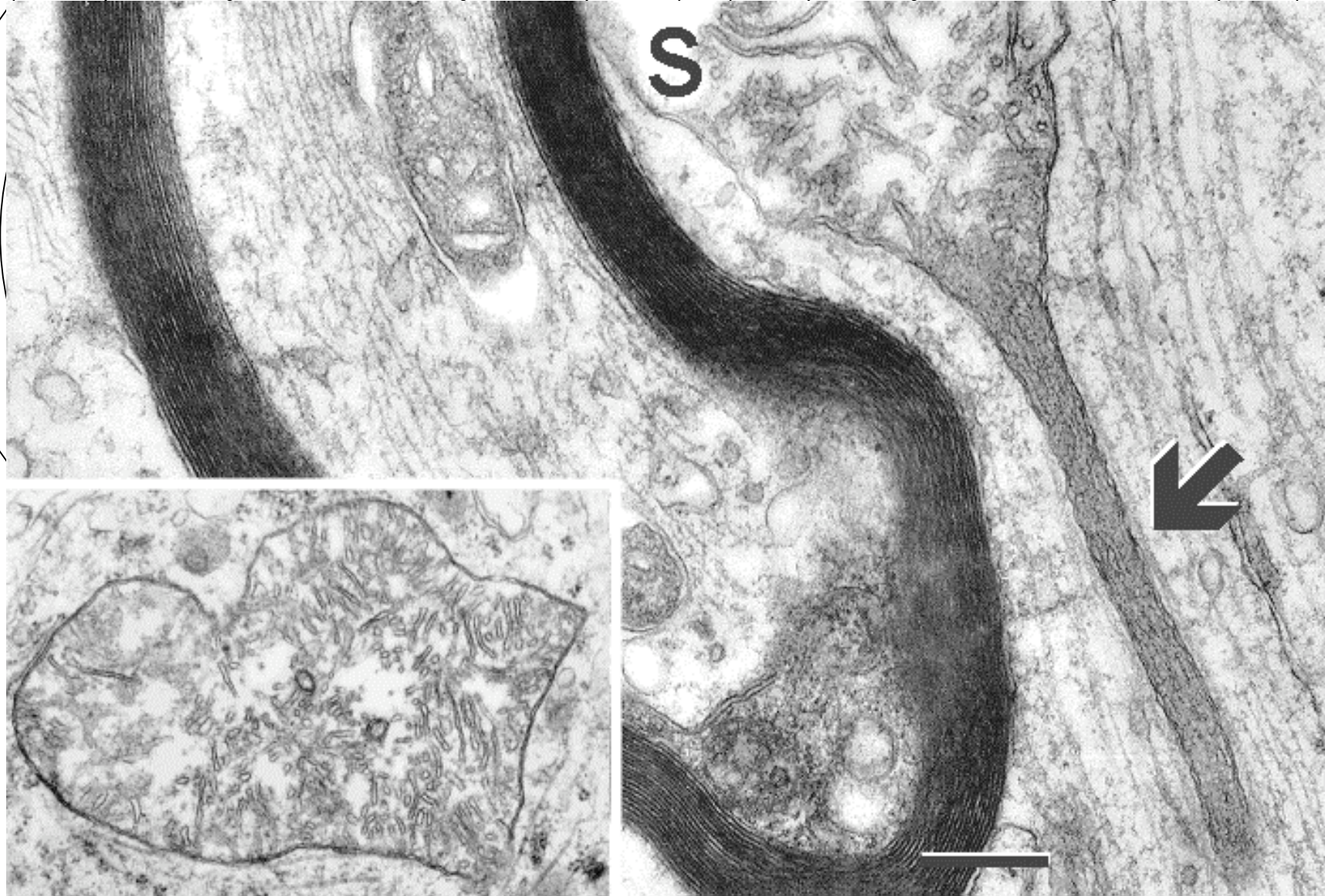
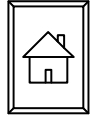
# False tight junctions - **ipossia o anossia**



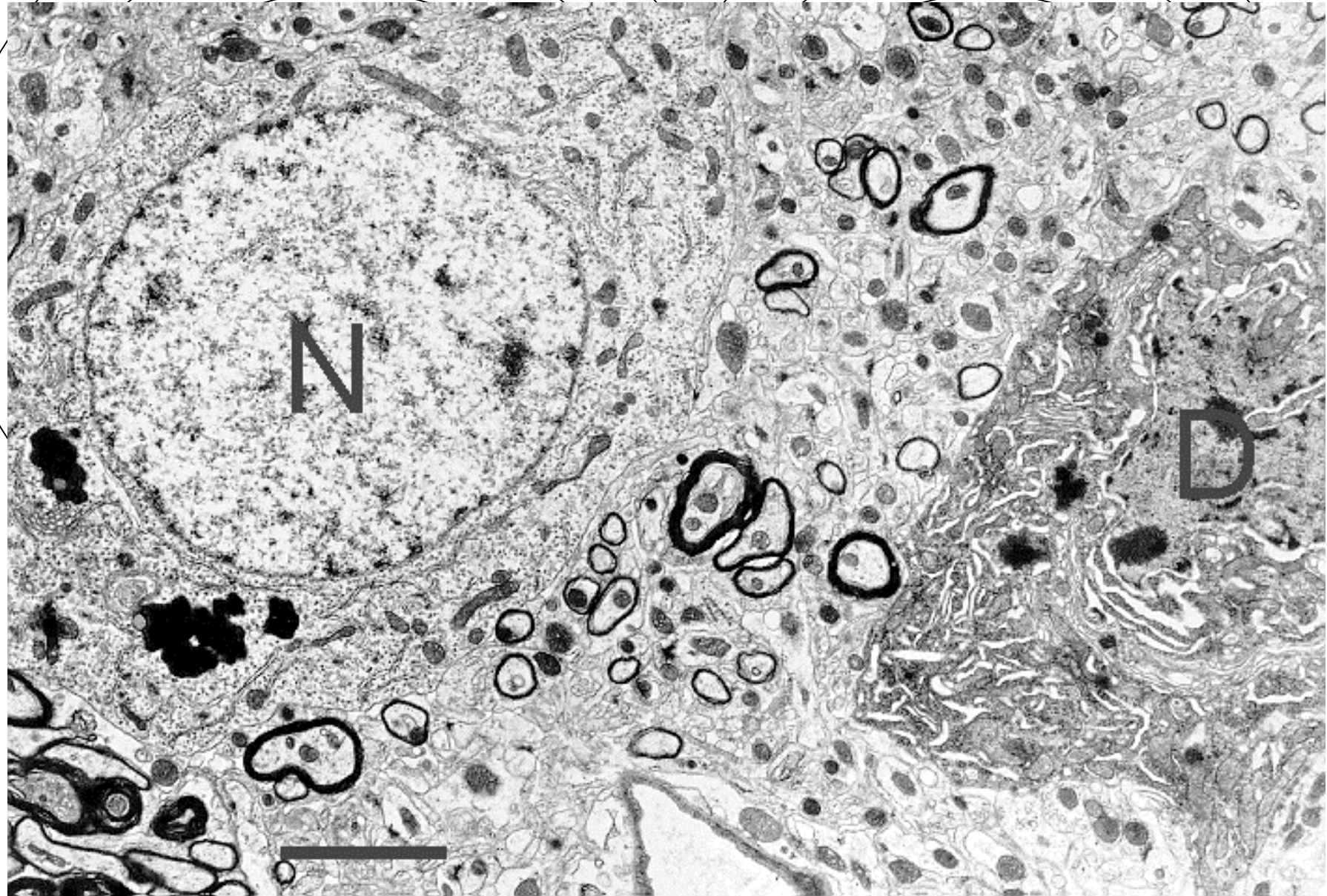
# Corpi mielinici - impurezze del fissativo

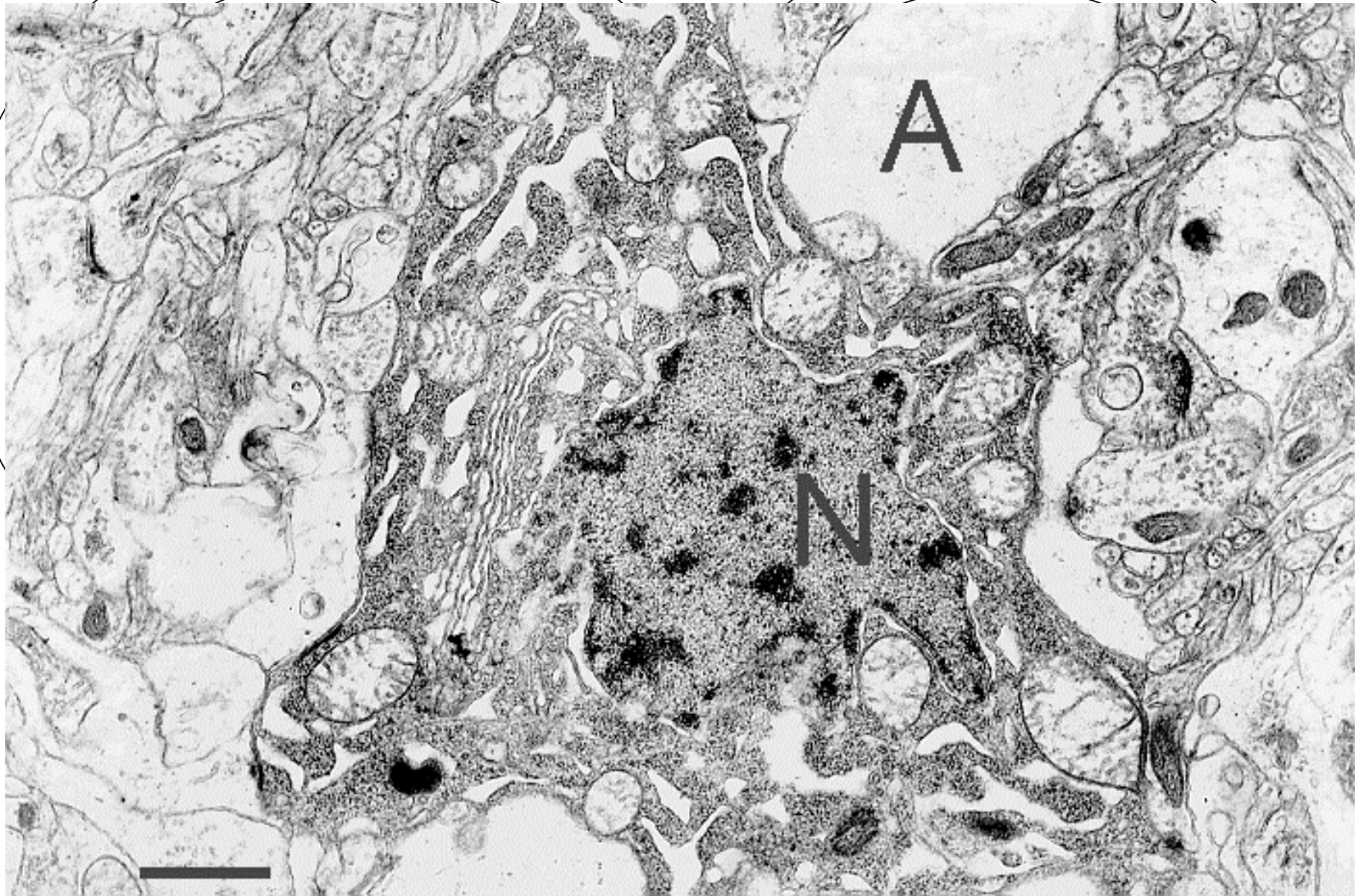


# Mitocondri rigonfi - impurezze del fissativo



# Neuroni SCURI -trauma meccanico

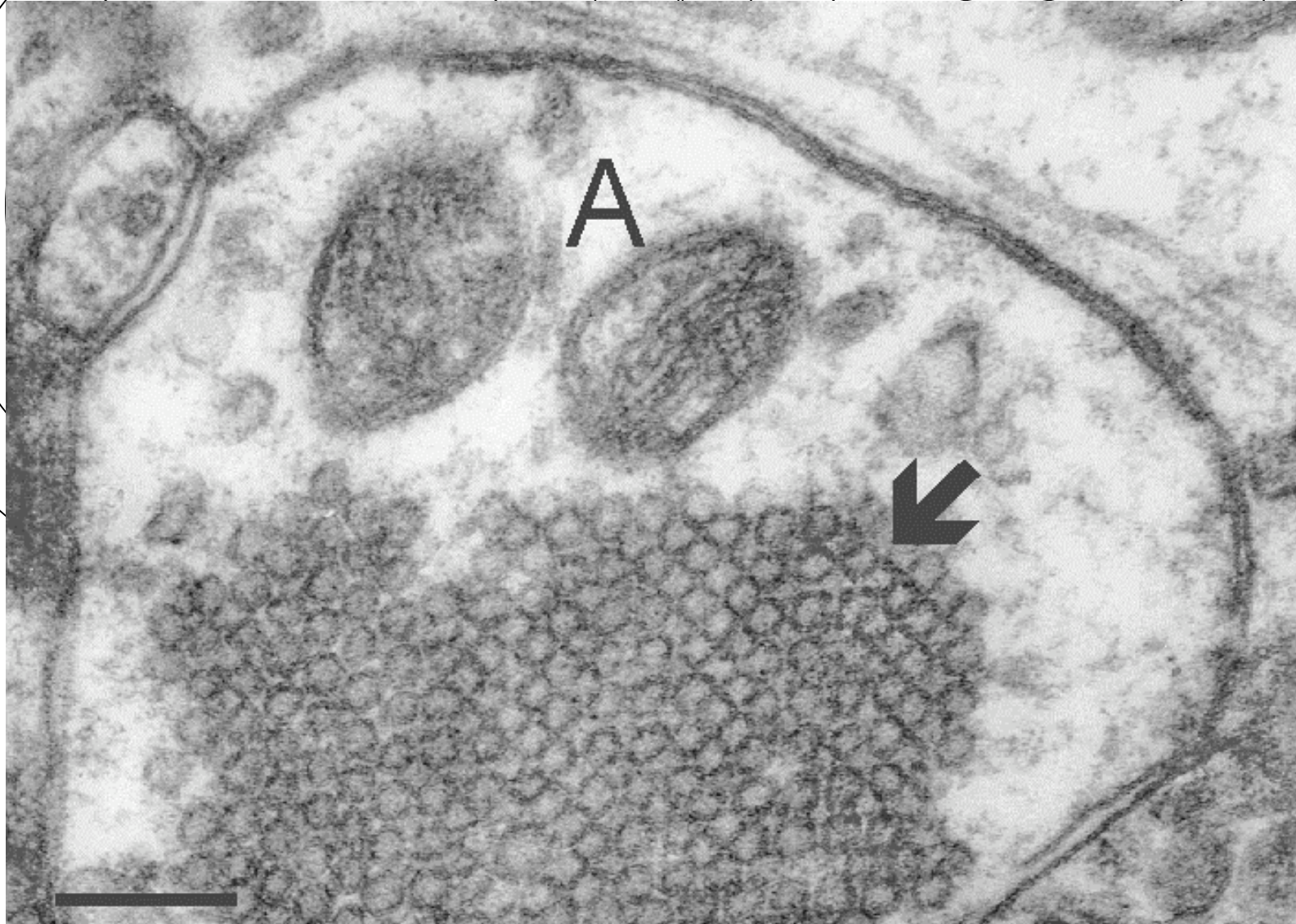
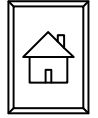




# Danni alla mielina - trauma meccanico



# Struttura paracristallina delle vescicole scarsa fissazione



# Fenomeni autolitici **cattiva conservazione del pezzo**

