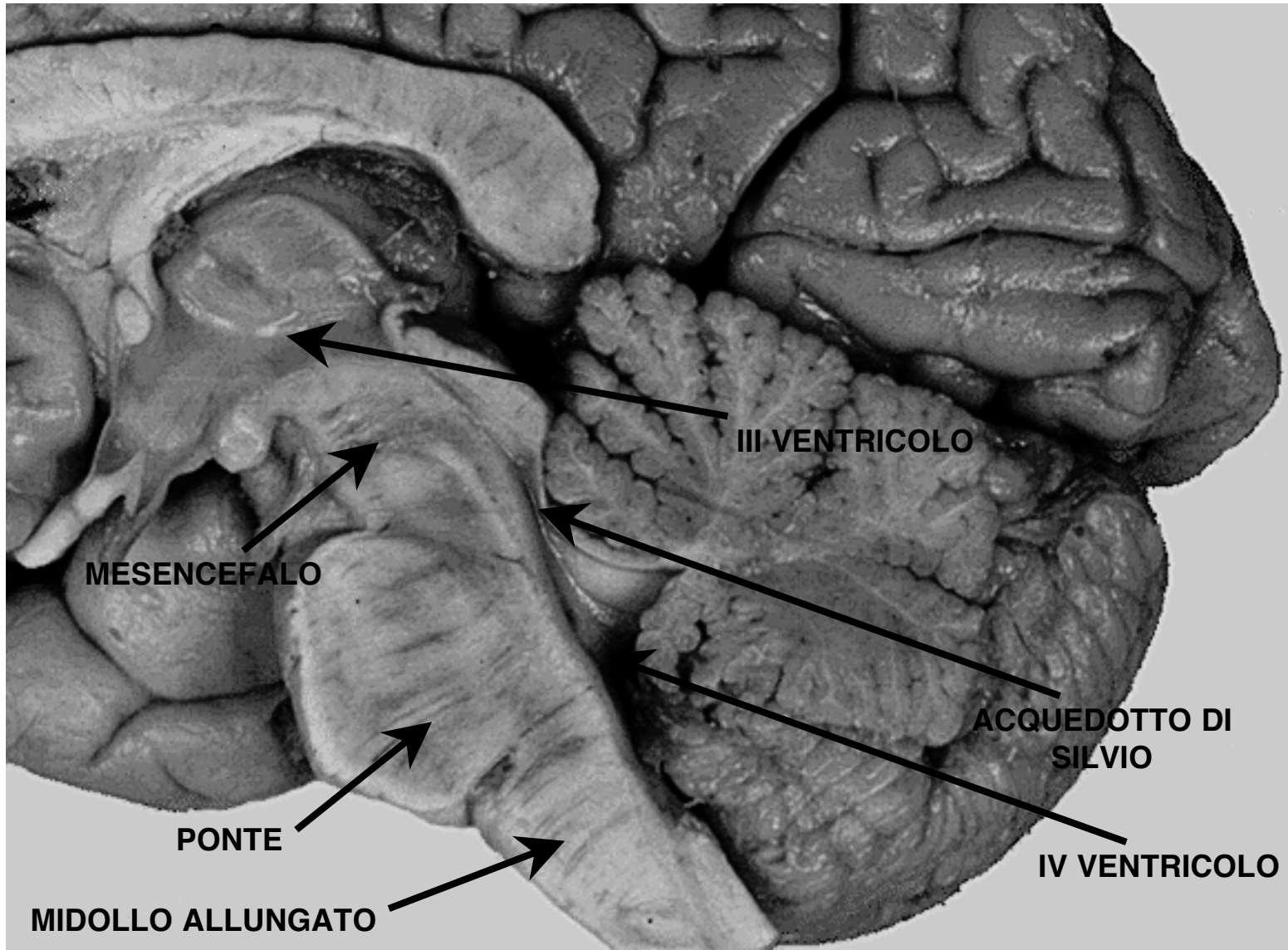


# **Tronco encefalico**

# GENERALITA'

Il tronco encefalico è costituito da 3 parti

- **Midollo allungato o bulbo**
- **Ponte**
- **Mesencefalo**



MESENCEFALO

PONTE

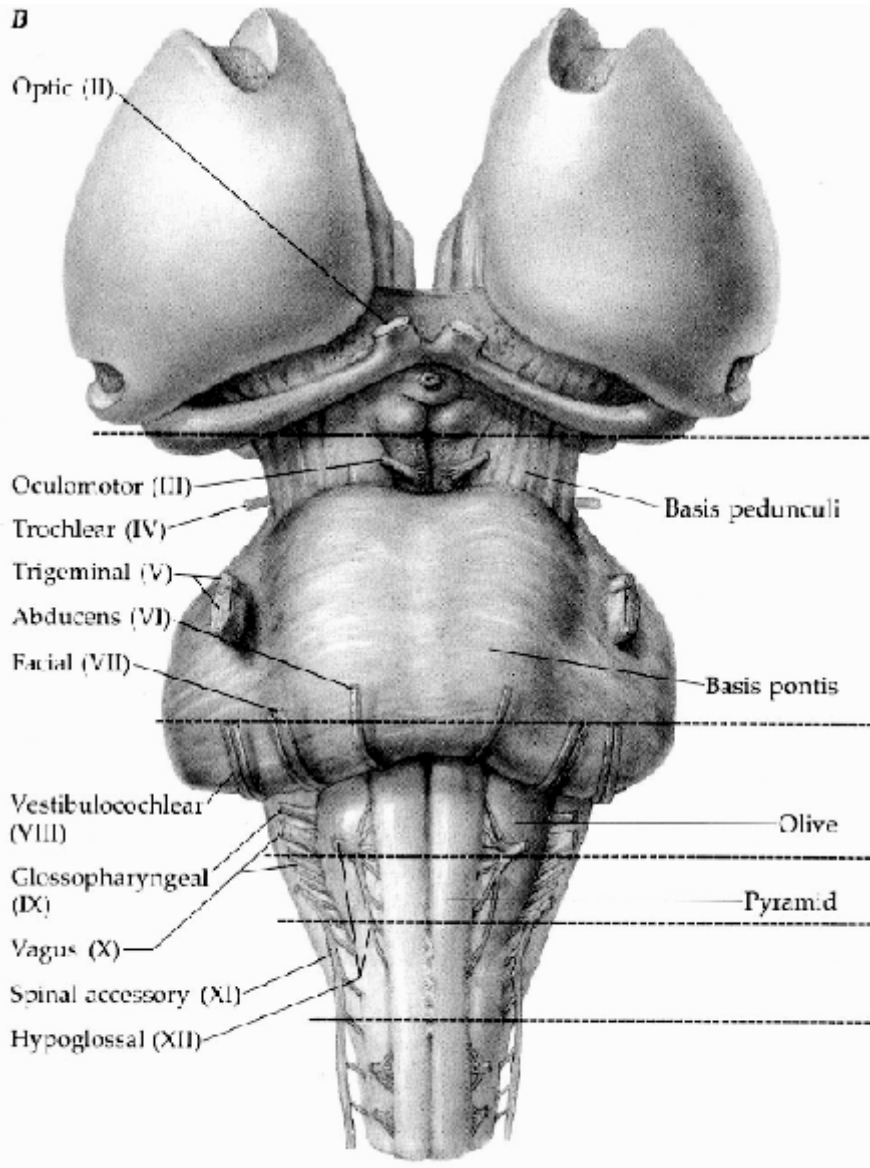
MIDOLLO ALLUNGATO

III VENTRICOLO

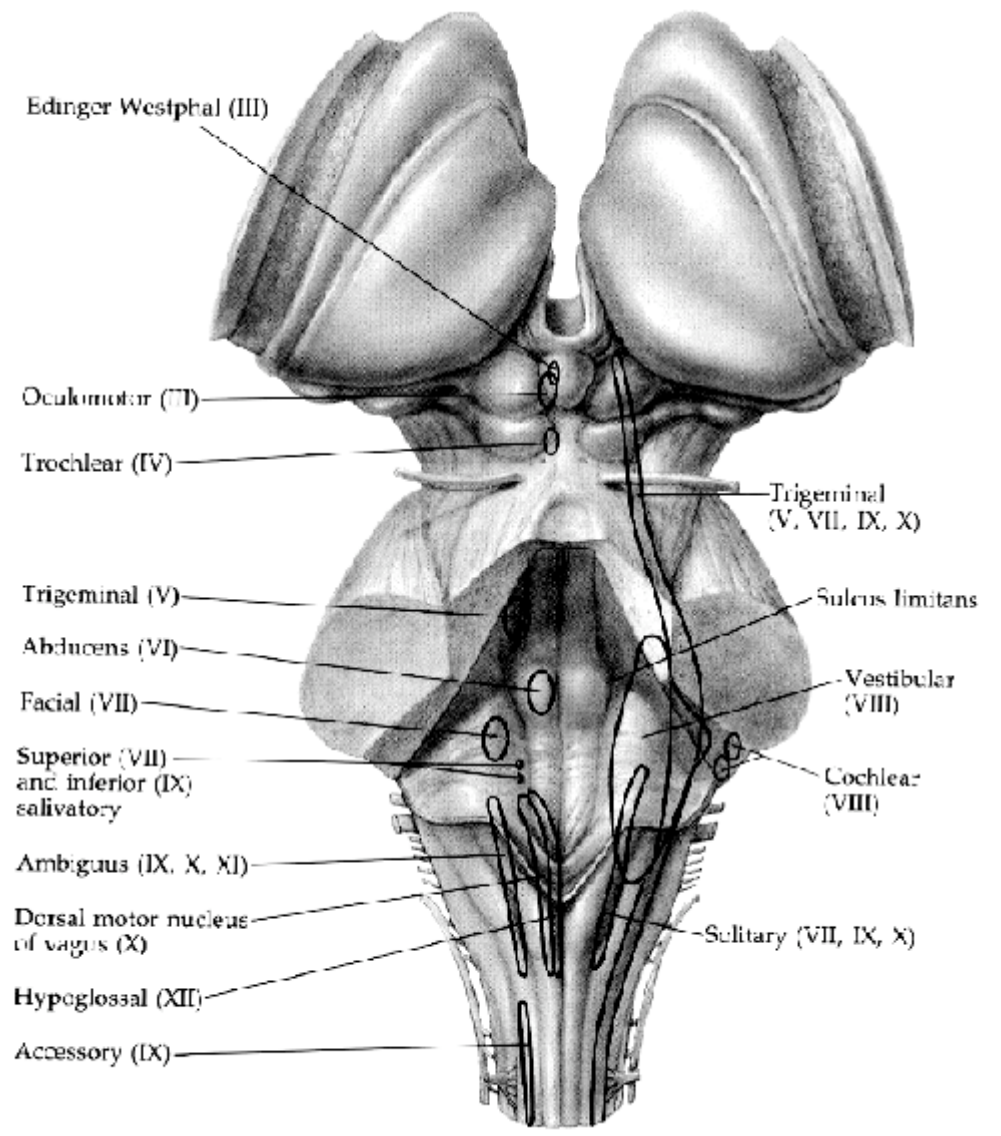
ACQUEDOTTO DI SILVIO

IV VENTRICOLO

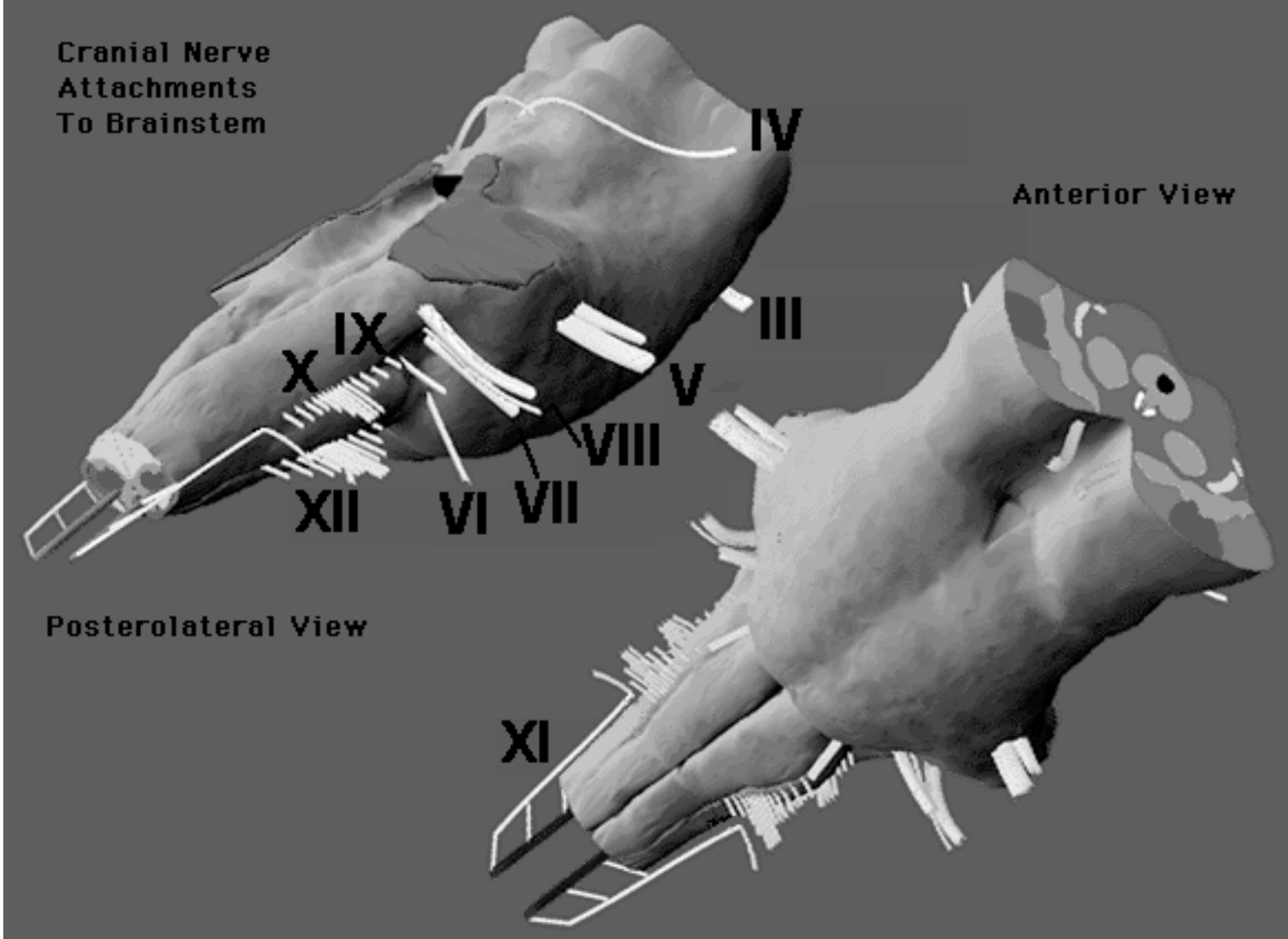
**B**



**VENTRALE**



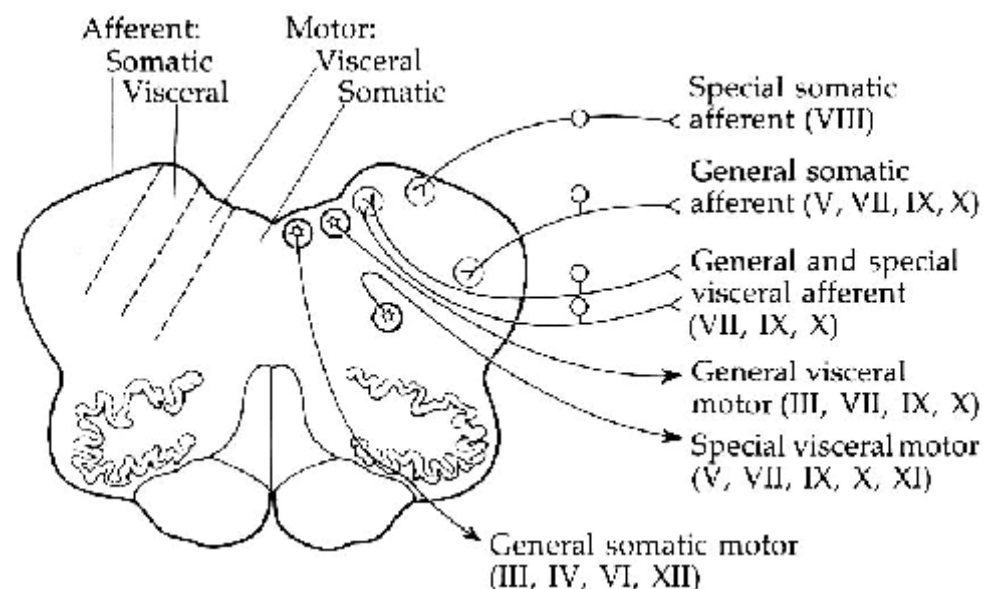
**DORSALE**



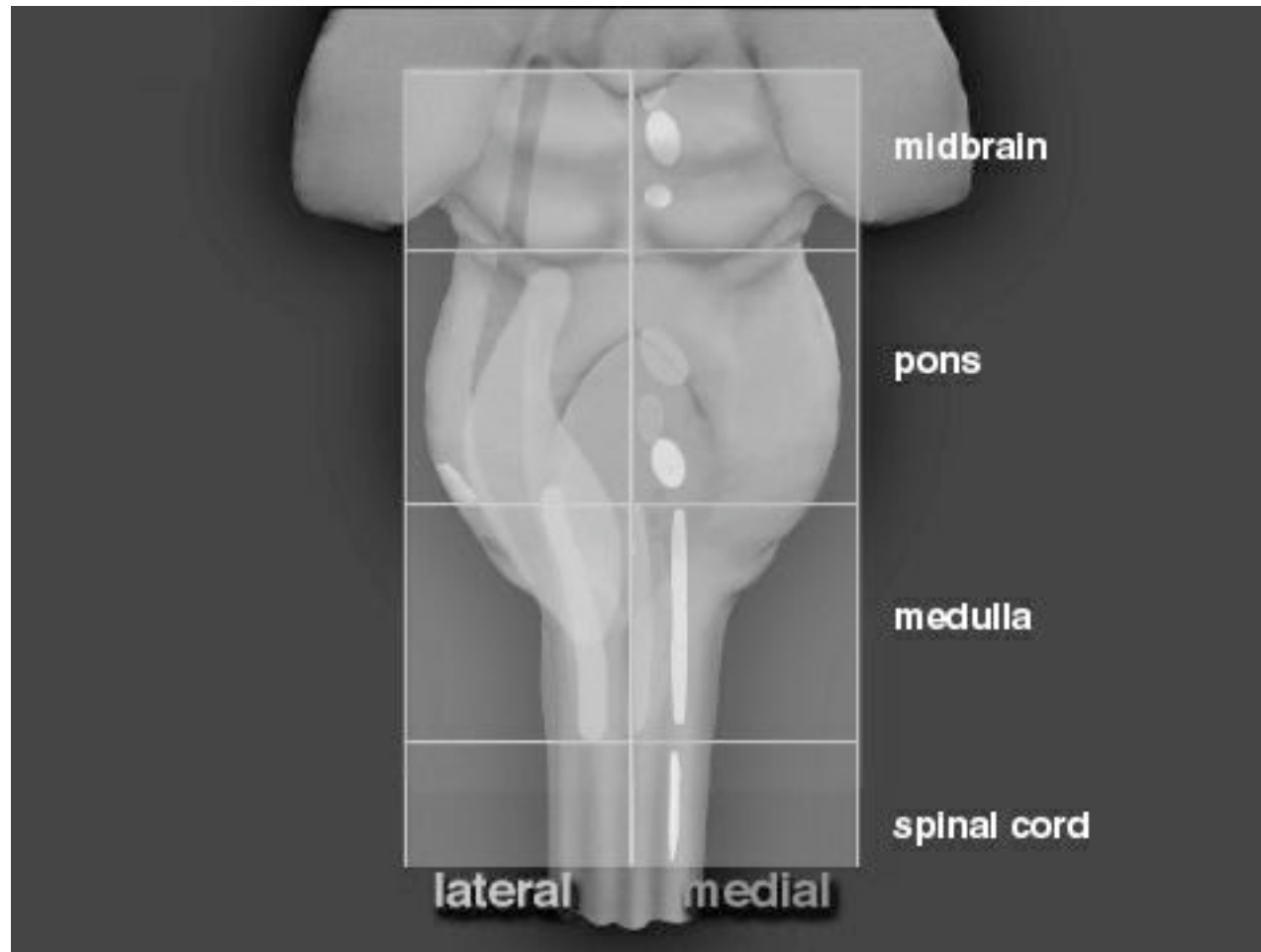
**Table 2.2** Functional Classes of Cranial Nerves<sup>a</sup>

Classification	Function	Structure Innervated	Cranial Nerve
<b>Afferent fibers</b>			
General somatic	Tactile, pain/temperature proprioception	Skin, mucous membranes, skeletal muscles of head and neck	V, VII, IX, X
General visceral	Mechanical, pain/temperature proprioception	Oral cavity, pharynx, larynx	V, VII, IX, X
Special somatic	Audition, balance	Cochlea, labyrinth	VIII
Special visceral	Taste, olfaction	Taste buds, olfactory epithelium	I, VII, IX, X
<b>Motor fibers</b>			
General somatic	Skeletal muscle control (somites)	Extraocular and tongue muscles	III, IV, VI, XII
General visceral	Autonomic control	Tear glands, sweat glands, gut	III, VII, IX, X
Special visceral	Skeletal muscle (branchiomic)	Facial expression, jaw	V, VII

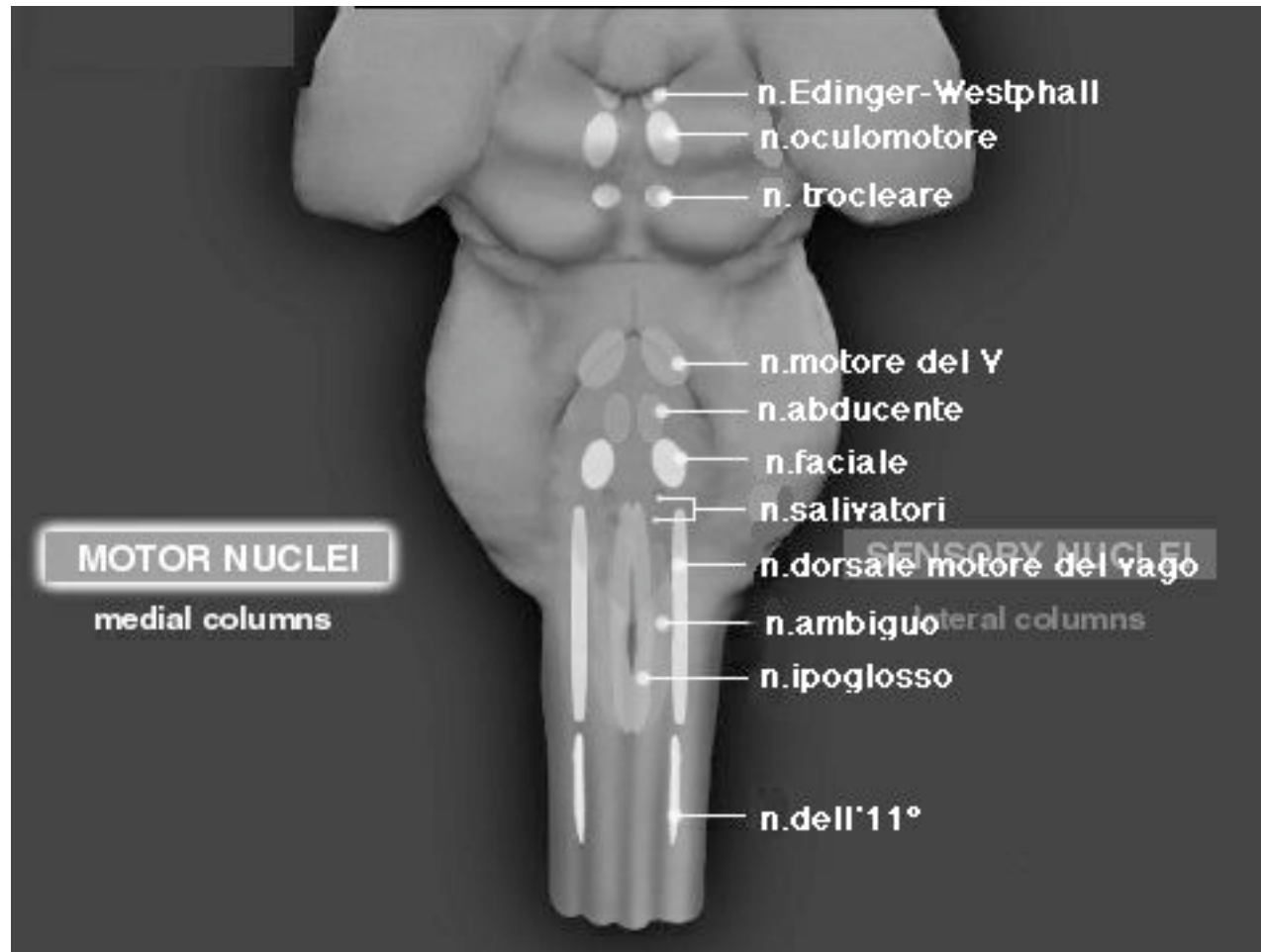
<sup>a</sup> The optic nerve (II) is not considered in this table because it does not contain the axons of primary sensory neurons but rather those of third-order neurons in the visual pathway. The visual system is, however, considered to be part of the special somatic afferent class.



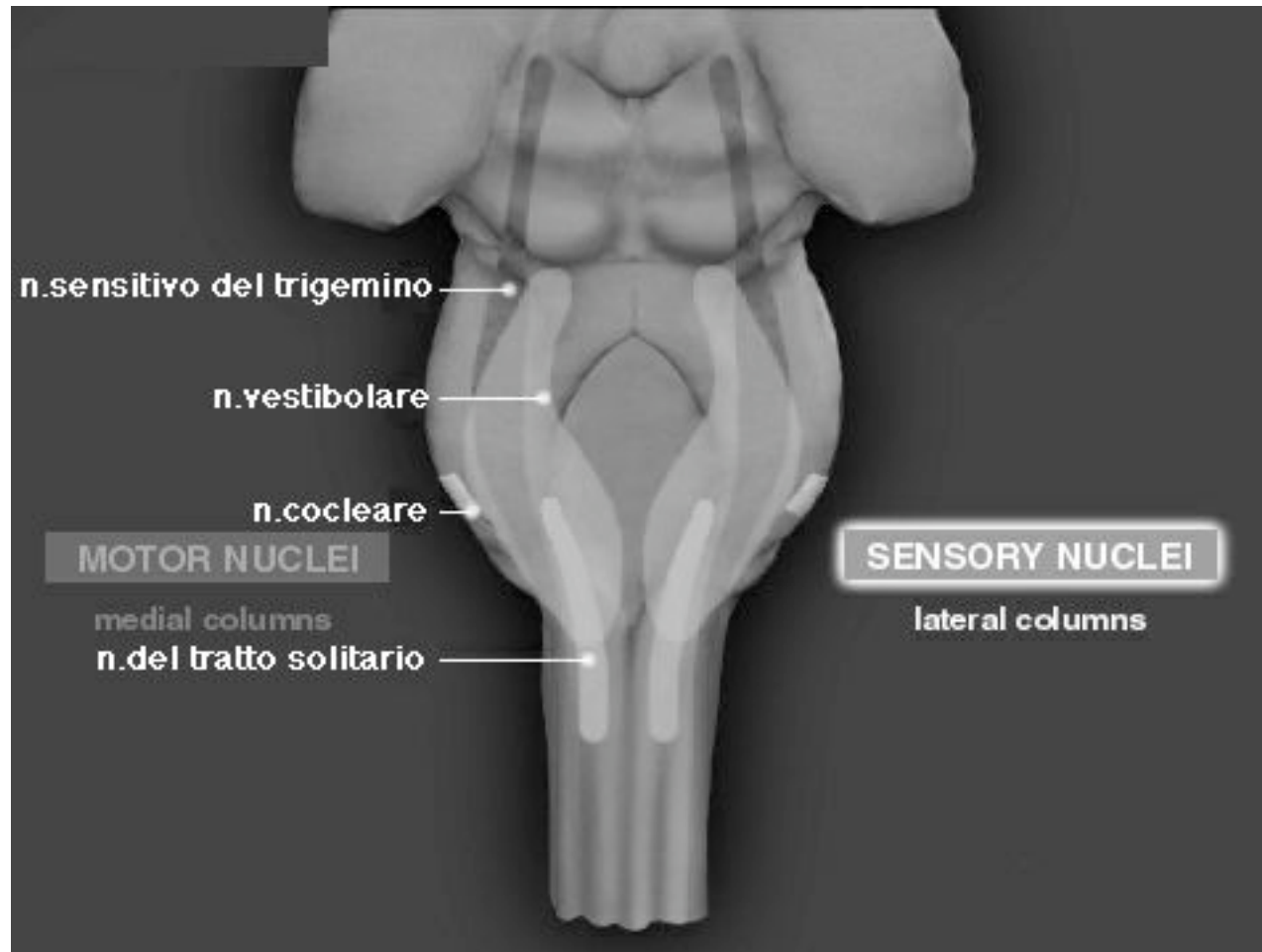
# Posizione dei nuclei



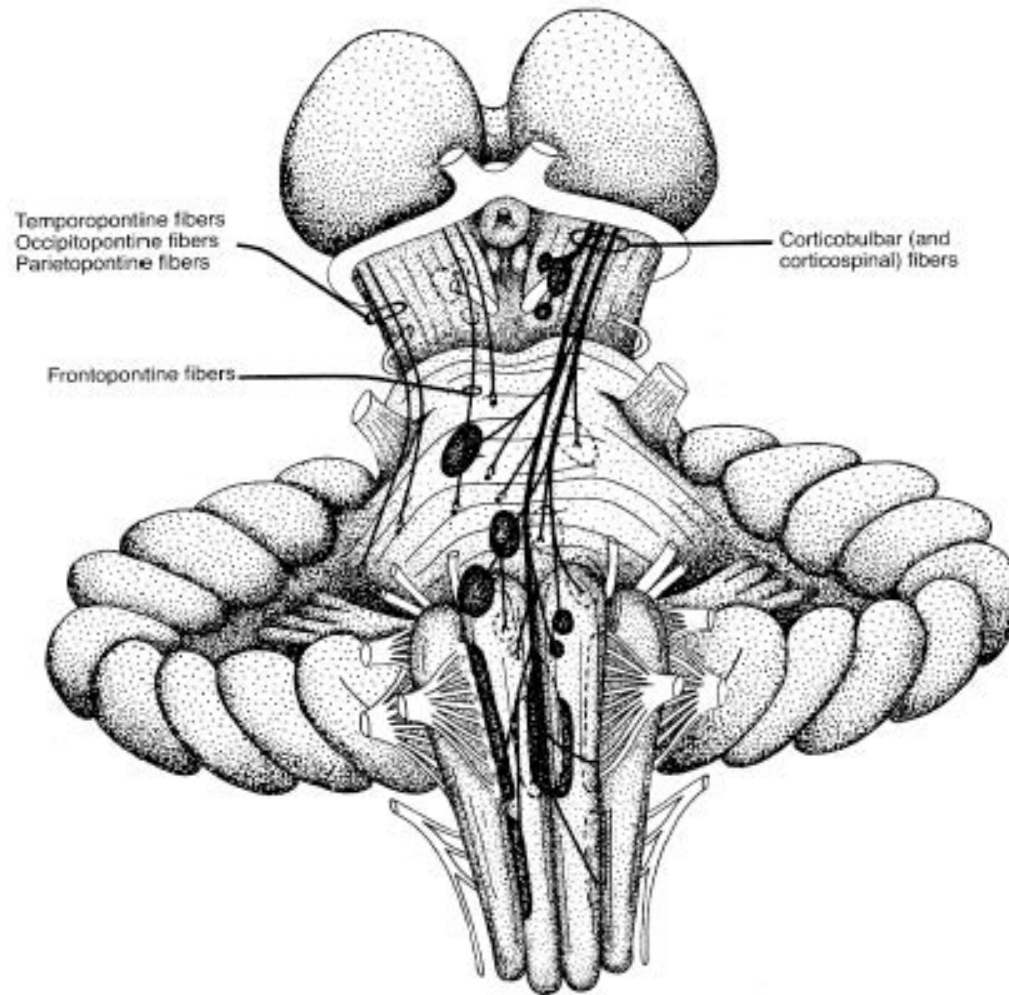
# Posizione dei nuclei



# Posizione dei nuclei



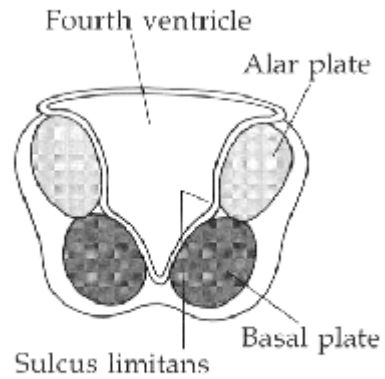
# Innervazione nuclei somatomotori



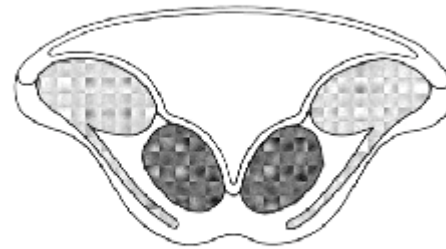
- **I nuclei somatomotori ricevono fibre discendenti provenienti dalla corteccia cerebrale.**
- **I tratti coinvolti sono il tratto cortico-mesencefalico, il tratto cortico-pontino, il tratto cortico-bulbare.**

# Midollo allungato

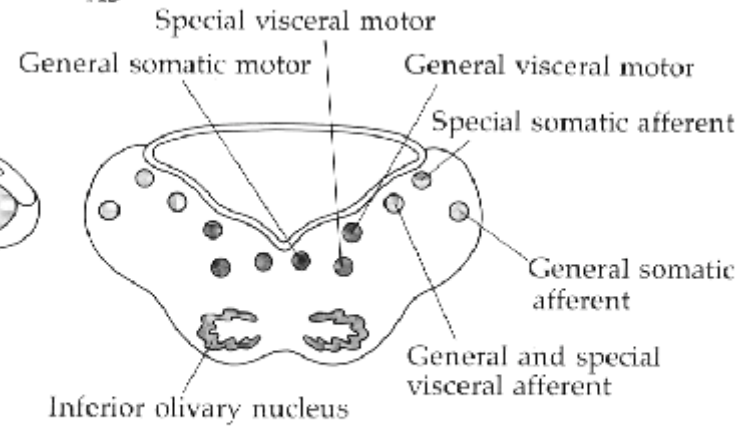
A1



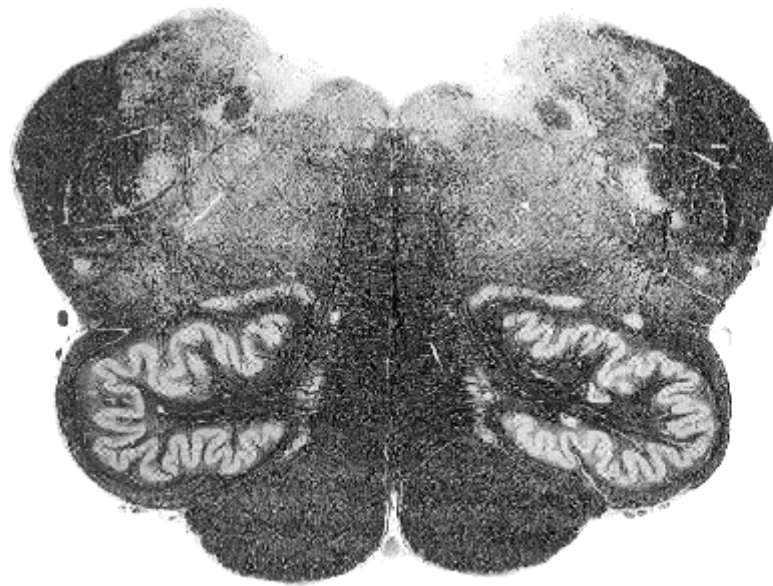
A2



A3

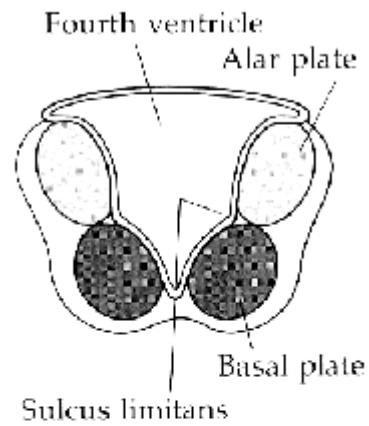


B

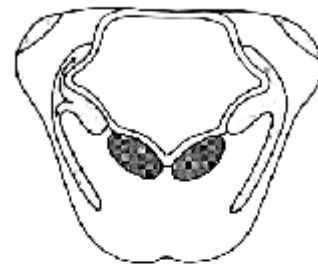


# Ponte

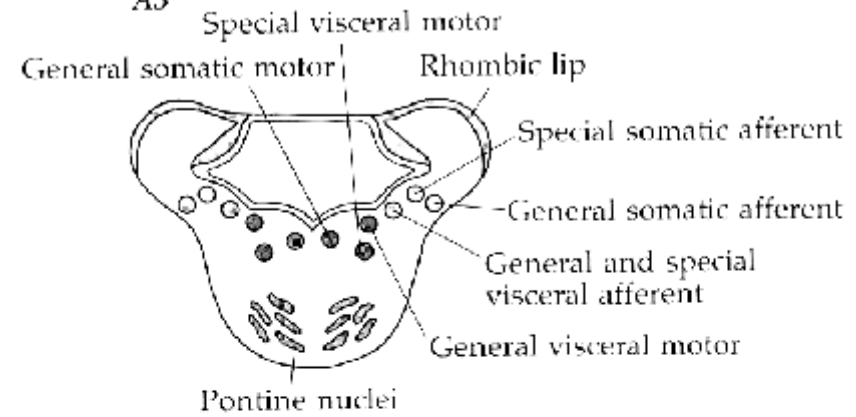
A1



A2



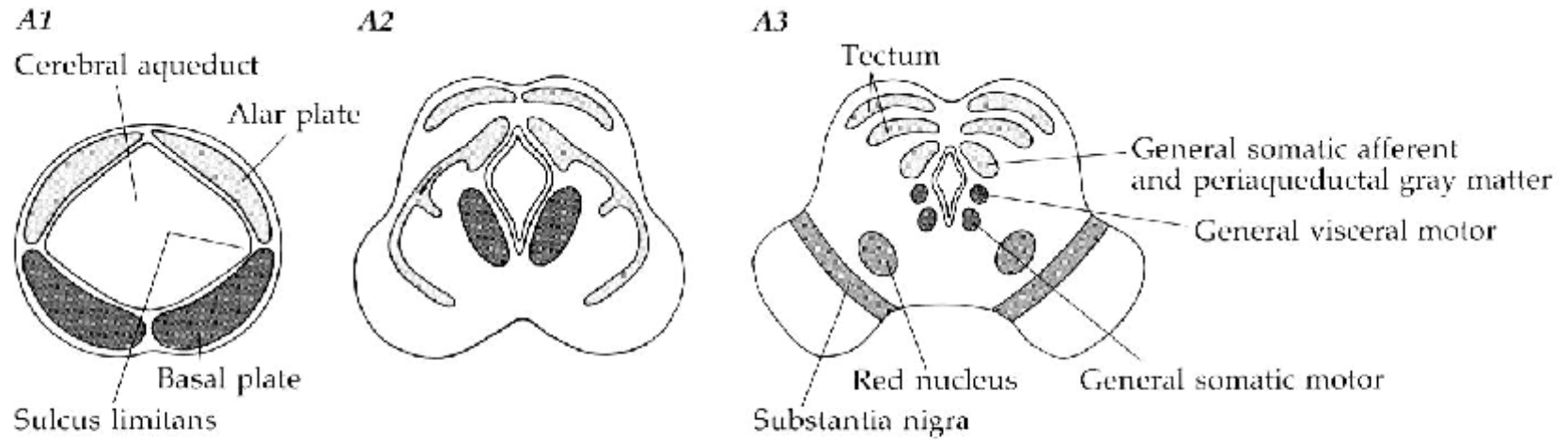
A3



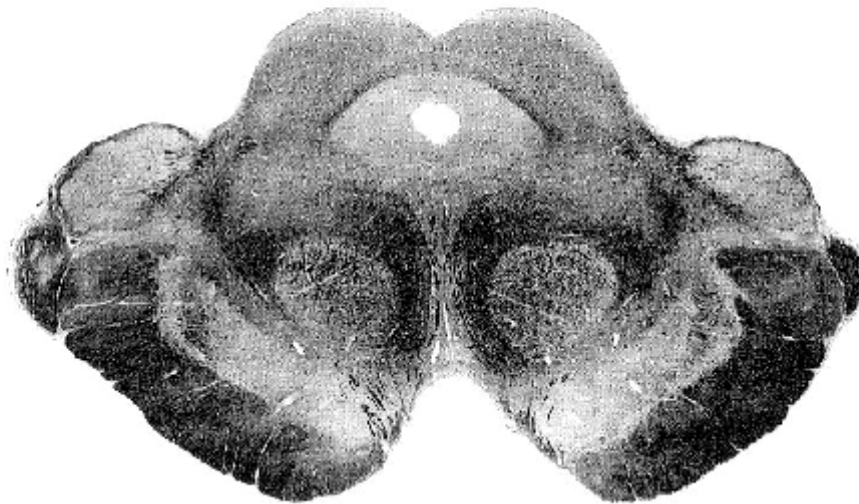
B



# Mesencefalo

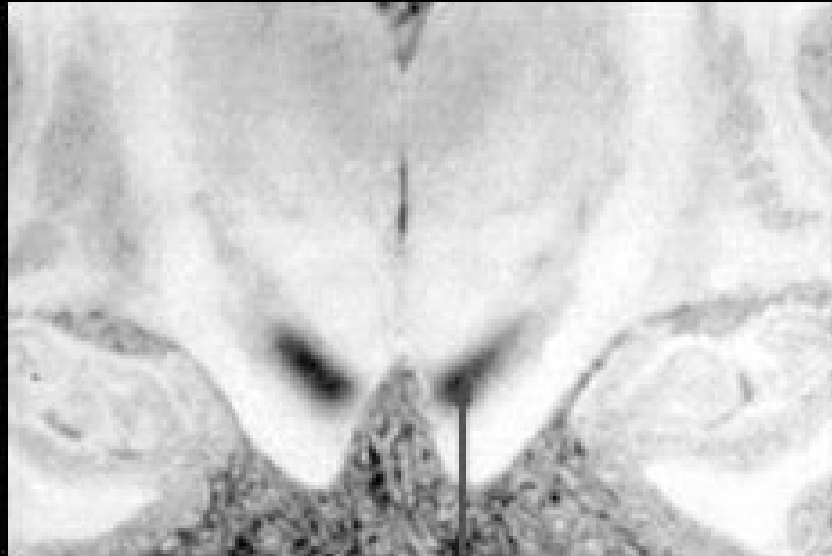


*B*



# Sostanza nera

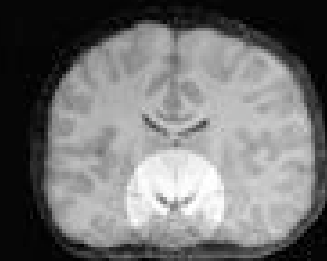
normal



affected



substantia nigra



coronal section

# Formazione Reticolare

